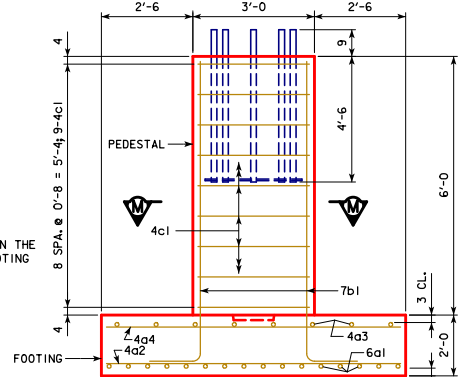
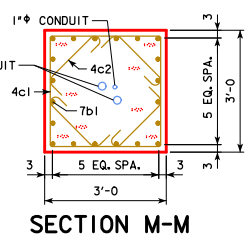
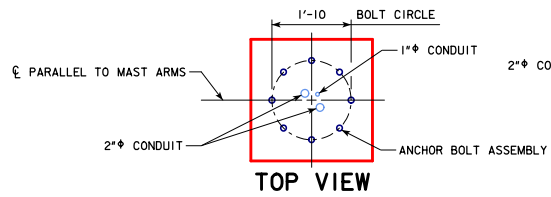
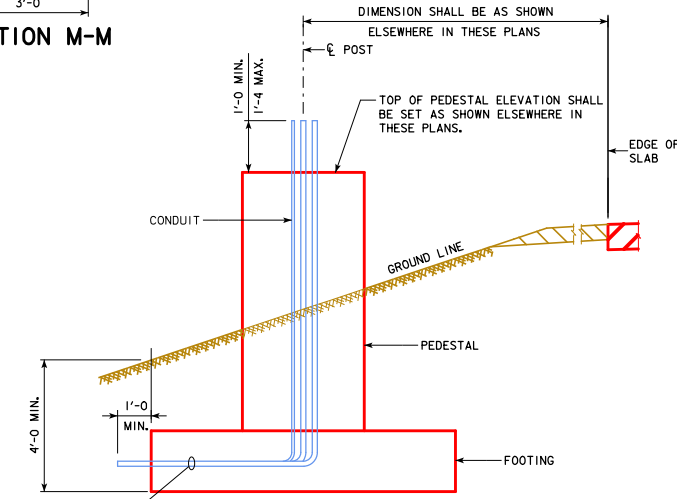


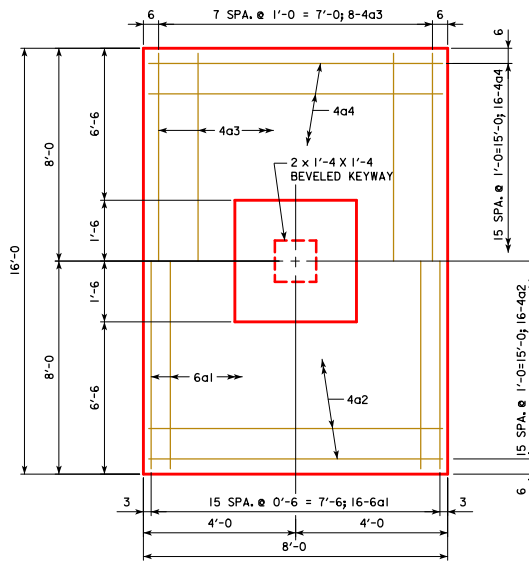
*REVISED 03-2019: ADDED TWO SPECIAL BID ITEMS ("ANCHOR BOLT ASSEMBLY--FURNISH" AND "ANCHOR BOLT ASSEMBLY--INSTALL AND SURVEY") TO CLARIFY CONTRACTOR RESPONSIBILITY TO ACCURATELY INSTALL ANCHOR BOLT ASSEMBLY. UPDATED IOWA DOT LOGO IN TITLE BLOCK. UPDATED BRIDGE ENGINEER SIGNATURE. *ROADSIDEDMSUPPORT.DGN - RDMS-05-13 - THIS SHEET ISSUED 04-2013.



ELEVATION VIEW
SHOWING REINFORCING



ELEVATION VIEW
SHOWING CONDUIT AND BACKFILL



FOOTING PLAN

TOP REINFORCING STEEL

BOTTOM REINFORCING STEEL

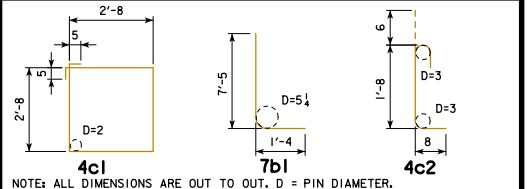
CONCRETE PLACEMENT QUANTITIES (ONE FOUNDATION)	
PEDESTAL	2.0
FOOTING	9.5
TOTAL - C.Y.	11.5

ESTIMATED FOUNDATION QUANTITIES (ONE FOUNDATION)		
ITEM	UNIT	QUANTITY
STRUCTURAL CONCRETE (MISCELLANEOUS)	C.Y.	11.5
REINFORCING STEEL-EPOXY COATED	LBS.	1120

EPOXY-COATED REINFORCING BAR LIST

BAR	LOCATION	SHAPE	NO.	LENGTH	WEIGHT
6a1	FOOTING BOTTL, LONGIT.	—	16	15'-8	377
4a2	FOOTING BOTTL, TRANSV.	—	16	7'-8	82
4a3	FOOTING TOP, LONGIT.	—	8	15'-8	84
4a4	FOOTING TOP, TRANSV.	—	16	7'-8	82
7b1	FOOTING-TO-PEDESTAL DOWEL	⌒	20	8'-9	358
4c1	PEDESTAL HOOPS	⊠	9	11'-6	69
4c2	PEDESTAL TIES	⌒	36	2'-10	68
REINFORCING STEEL - EPOXY COATED TOTAL (LBS.)					1120

BENT BAR DETAILS



NOTE: ALL DIMENSIONS ARE OUT TO OUT. D = PIN DIAMETER.

ANCHOR BOLT NOTES:

ALL ANCHOR BOLT MATERIAL AND GALVANIZING SHALL BE IN ACCORDANCE WITH ARTICLE 4187.01, C, 3 OF THE STANDARD SPECIFICATIONS.

THE ANCHOR BOLT ASSEMBLY SHALL BE PROPERLY ALIGNED AT THE CENTER OF PEDESTAL AND SECURELY WIRED IN PLACE BEFORE CONCRETE IS PLACED.

BENDING OR WELDING OF ANCHOR BOLTS SHALL NOT BE ALLOWED.

PRICE BID FOR CONTRACT ITEMS SHALL INCLUDE ALL LABOR AND MATERIALS NECESSARY TO CONSTRUCT ROADSIDE DYNAMIC MESSAGE SIGN SUPPORT FOUNDATION AS DETAILED HEREON. THE COST OF FURNISHING AND INSTALLING RODENT GUARD SHALL BE INCLUDED IN THE PRICE BID FOR "STRUCTURAL CONCRETE (MISCELLANEOUS)" AND NO SEPARATE PAYMENT WILL BE MADE. THE COST OF FURNISHING ANCHOR BOLT ASSEMBLY SHALL BE INCLUDED IN THE PRICE BID FOR "ANCHOR BOLT ASSEMBLY--FURNISH". (NOTE THAT THIS IS A SPECIAL BID ITEM.) THE COST OF ACCURATELY INSTALLING AND SURVEYING ANCHOR BOLT ASSEMBLY SHALL BE INCLUDED IN THE PRICE BID FOR "ANCHOR BOLT ASSEMBLY--INSTALL AND SURVEY". (NOTE THAT THIS IS A SPECIAL BID ITEM.) SEE STRUCTURAL ALIGNMENT/TOLERANCE NOTES ON SHEET RDMS-01-13 FOR ANCHOR BOLT ASSEMBLY ALIGNMENT DOCUMENTATION REQUIREMENTS.

CONTRACT ITEMS FOR ROADSIDE DYNAMIC MESSAGE SIGN SUPPORT FOUNDATION CONSTRUCTION ARE:

- REINFORCING STEEL, EPOXY COATED - POUNDS
- STRUCTURAL CONCRETE (MISCELLANEOUS) - CUBIC YARDS
- EXCAVATION - CUBIC YARDS OF CLASS SPECIFIED
- ANCHOR BOLT ASSEMBLY--FURNISH (SPECIAL BID ITEM) - POUNDS
- ANCHOR BOLT ASSEMBLY--INSTALL AND SURVEY (SPECIAL BID ITEM) - EACH

03-2019
LATEST REVISION DATE

[Signature]
APPROVED BY BRIDGE ENGINEER

IOWA DOT Highway Division

STANDARD DESIGN
ROADSIDE DYNAMIC MESSAGE SIGN (DMS) SUPPORT
APRIL, 2013

FOUNDATION DETAILS RDMS-05-13