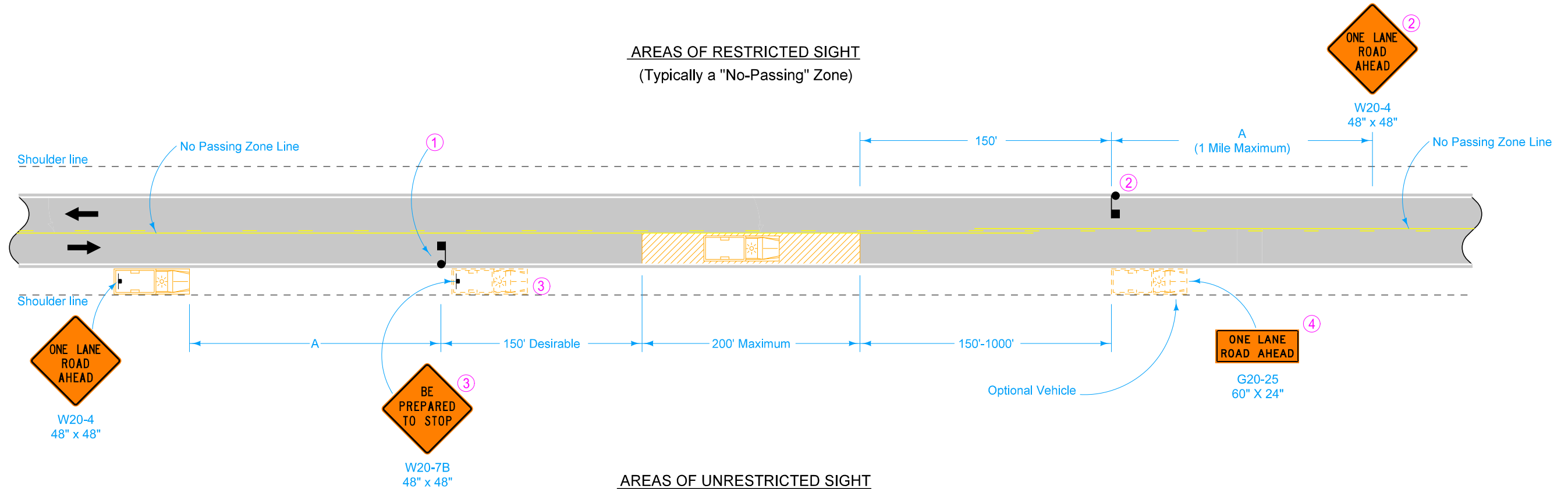
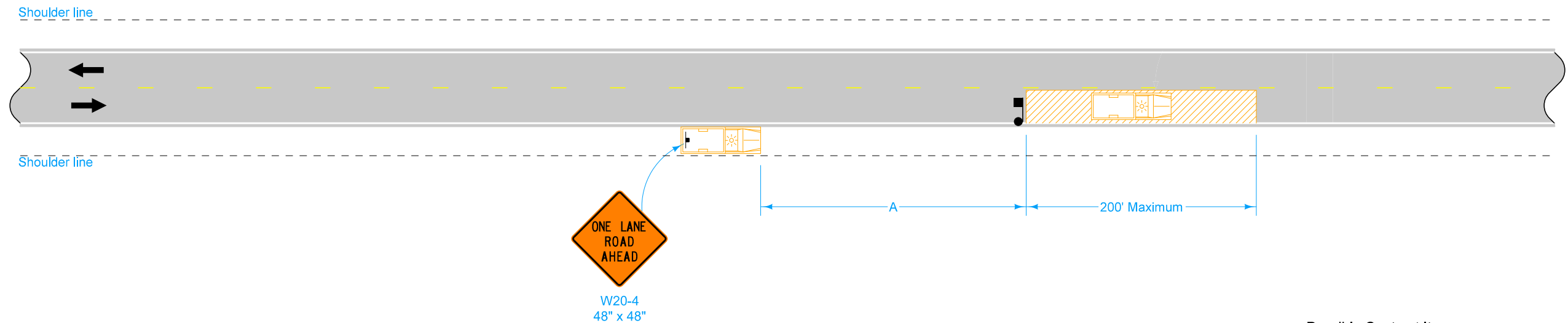


AREAS OF RESTRICTED SIGHT
(Typically a "No-Passing" Zone)



AREAS OF UNRESTRICTED SIGHT



This layout is intended for use with slow-moving operations or with operations involving stops not to exceed 15 minutes. For stops exceeding 15 minutes or in heavy traffic situations, use [TC-213](#).

Equip all vehicles with an amber revolving light or an amber strobe light.

- ① When a stop is made in an area of restricted sight distance, use a flagger to hold traffic in the closed lane and allow traffic to pass when conditions are safe.
- ② When a stop is made or work proceeds in an area where sight distance is restricted from either direction and is anticipated to be more than 5 minutes, a second flagger and ONE LANE ROAD AHEAD sign is required.
- ③ This vehicle and sign may be used in lieu of a flagger for Falling Weight Deflectometer tests.
- ④ Refer to [SI-881](#) for sign details.

Possible Contract Items:
Flaggers
Traffic Control

LEGEND

- Direction of Traffic
- Flagger
- Traffic Sign
- Work Area
- Work Vehicle

| SPEED LIMIT (mph)* | A min. |
|--------------------|--------|
| 25 or less | 200' |
| 30-35 | 300' |
| 40-45 | 500' |
| 50 or greater | 1000' |

* Speed Limit refers to regulatory speed limit before road work.

| | | |
|---|----------|---------|
| STANDARD ROAD PLAN | REVISION | |
| | 4 | 4-18-23 |
| TC-231 | | |
| SHEET 1 of 1 | | |
| REVISIONS: Added speed limit note. Formatted speed limit table. | | |
| <i>Shawn Miller</i> APPROVED BY DESIGN METHODS ENGINEER | | |
| SLOW MOVING VEHICLE OPERATING IN THE TRAFFIC LANE | | |