

See Sheets 2 and 4 for Details

See Sheets 3 and 4 for Details

OVERVIEW OF CROSSOVER



Place Two-Way Traffic symbol and DO NOT PASS signs alternately on both sides of the roadway at a maximum of one-half mile intervals for both directions of travel. Always have signs in sight of motorists.

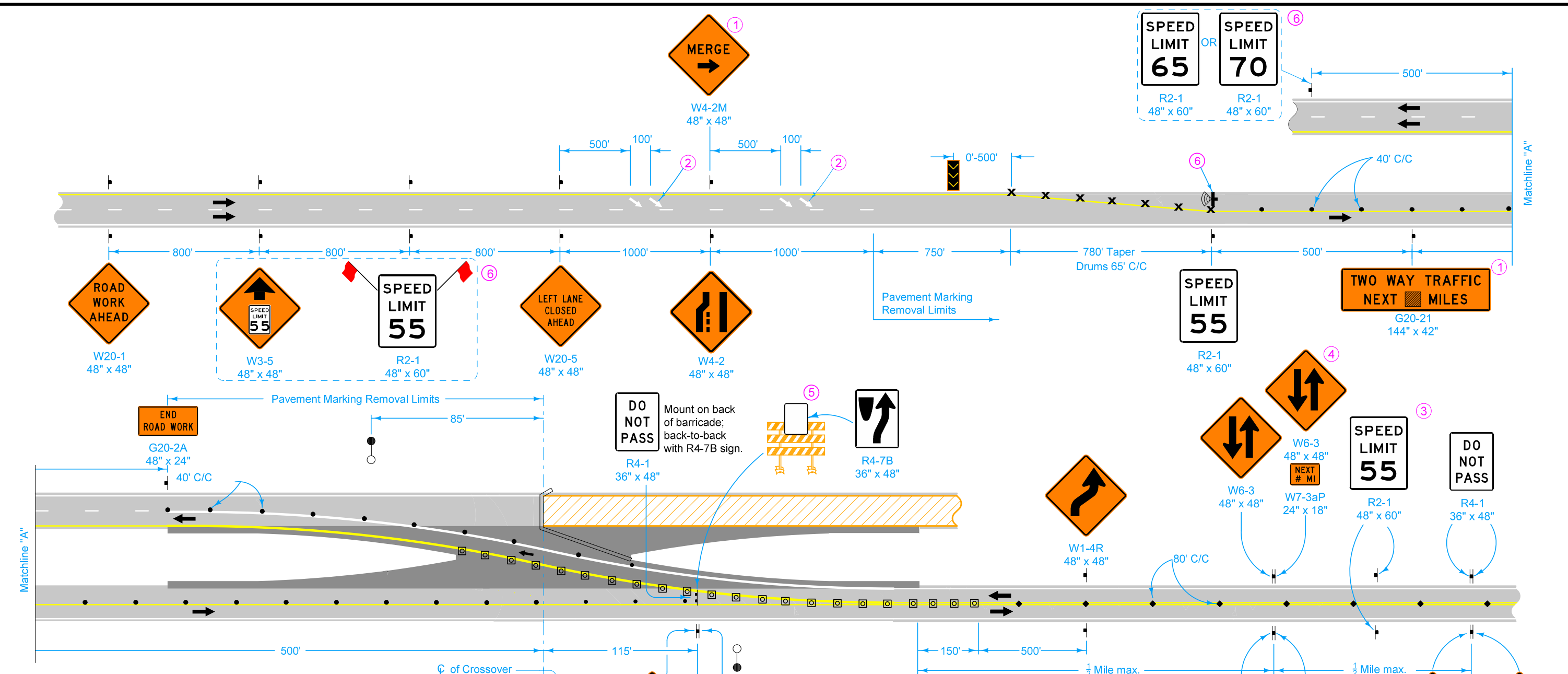
Possible Contract Items:

- Painted Symbols and Legends
- Pavement Marking Items
- Pavement Marking Removed
- Safety Closures
- Temporary Floodlighting
- Temporary Lane Separator System
- Traffic Control

Possible Tabulations:

[108-13A](#), [108-22](#), [108-27](#), [108-29](#), [108-30](#), [108-33](#), [108-35](#)

 STANDARD ROAD PLAN	REVISION	
	18	10-15-24
TC-61		
SHEET 1 of 6		
REVISIONS:	Removed line width dimension on page 4, Modified Channelizing Line to Lane Line.	
 <small>APPROVED BY DESIGN METHODS ENGINEER</small>		
TWO-LANE, TWO WAY OPERATION		



LEGEND

- Traffic Sign
- Drum
- 42" Channelizer
- Tubular Marker
- Speed Feedback Sign
- Arrow Board
- Safety Closure (Refer to TC-252)
- Temporary Floodlighting
- Work Area
- Direction of Traffic
- Detour Pavement
- Temporary Lane Separator System

See sheet 4 for supplemental drawings.

- ① Refer to [SI-881](#) for sign details.
- ② Refer to [PM-111](#) for arrow details.
- ③ Space Speed Limit signs at one-mile intervals.
- ④ Install an additional supplemental plaque with the message NEXT X MILES on the Two-Way Traffic symbol sign assembly on the right side of the roadway to inform motorists of the remaining length of two-lane traffic. Round X to the nearest whole-mile increment.

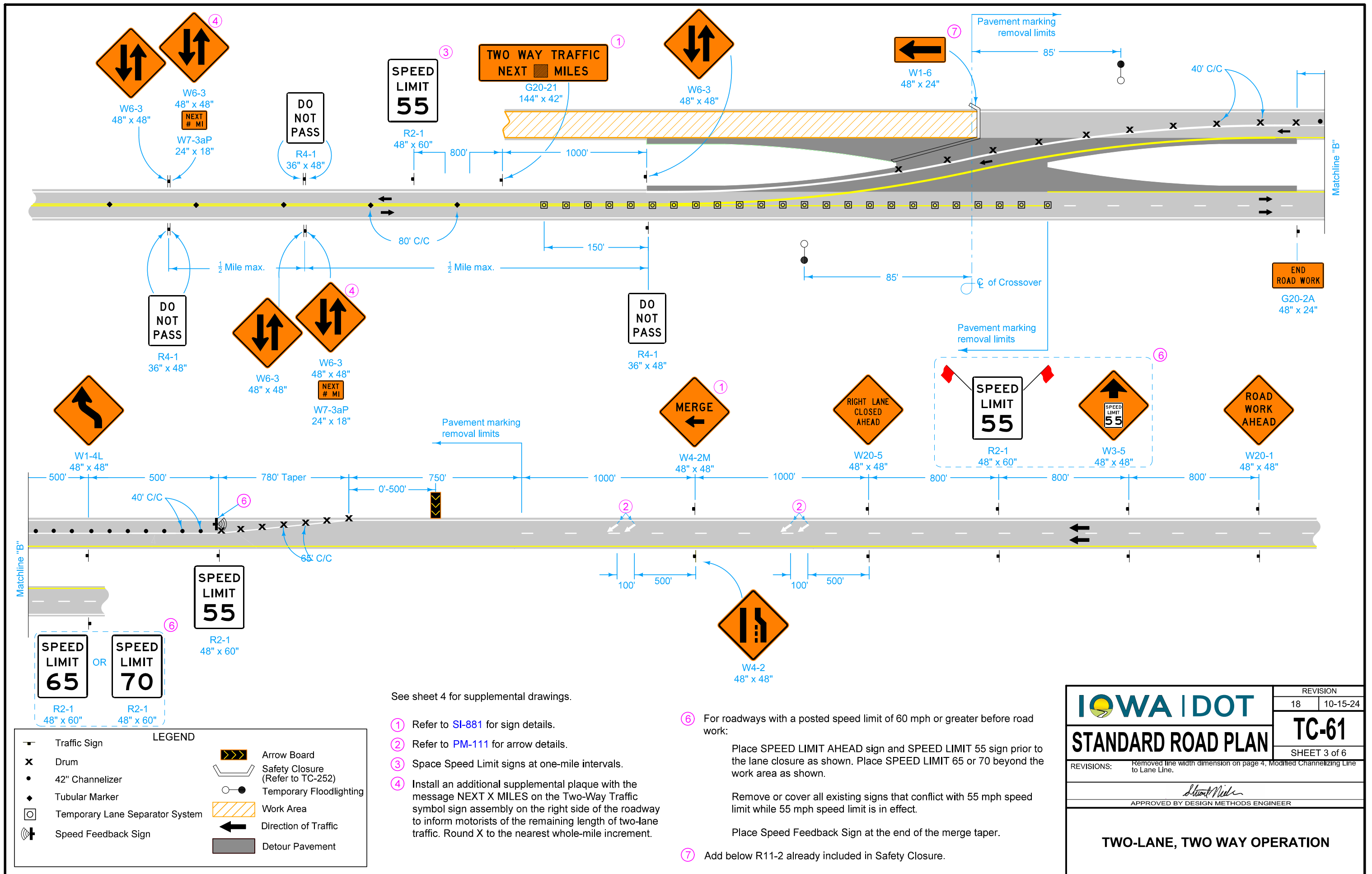
- ⑤ Use a 4 foot wide Type III Barricade.
- ⑥ For roadways with a posted speed limit of 60 mph or greater before road work:

Place SPEED LIMIT AHEAD sign and SPEED LIMIT 55 sign prior to the lane closure as shown. Place SPEED LIMIT 65 or 70 beyond the work area as shown.

Remove or cover all existing signs that conflict with 55 mph speed limit while 55 mph speed limit is in effect.

Place Speed Feedback Sign at the end of the merge taper.

	REVISION
	18 10-15-24
STANDARD ROAD PLAN	TC-61
REVISIONS: Removed line width dimension on page 4, Modified Channelizing Line to Lane Line.	SHEET 2 of 6
 <small>APPROVED BY DESIGN METHODS ENGINEER</small>	
TWO-LANE, TWO WAY OPERATION	



See sheet 4 for supplemental drawings.

- ① Refer to SI-881 for sign details.
- ② Refer to PM-111 for arrow details.
- ③ Space Speed Limit signs at one-mile intervals.
- ④ Install an additional supplemental plaque with the message NEXT X MILES on the right side of the roadway to inform motorists of the remaining length of two-lane traffic. Round X to the nearest whole-mile increment.

- ⑥ For roadways with a posted speed limit of 60 mph or greater before road work:

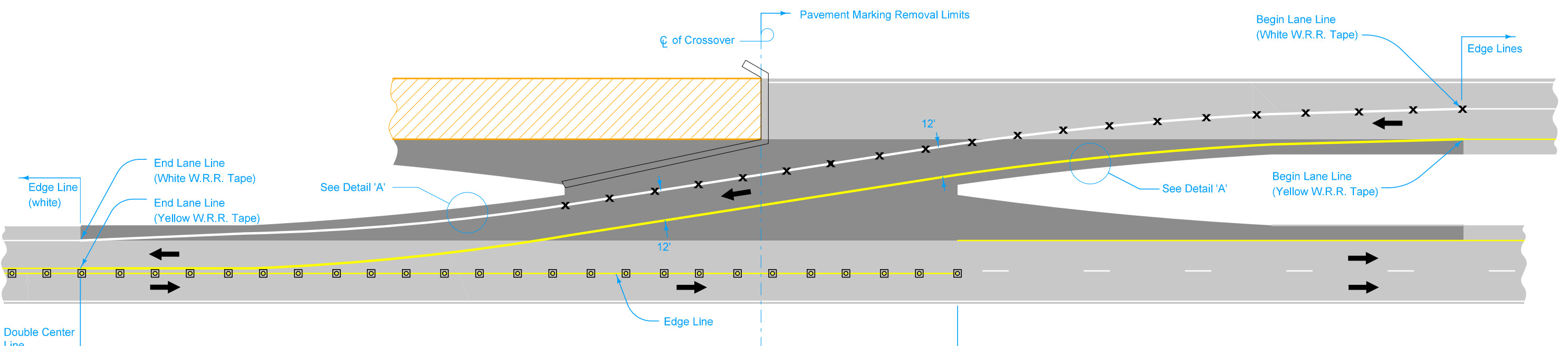
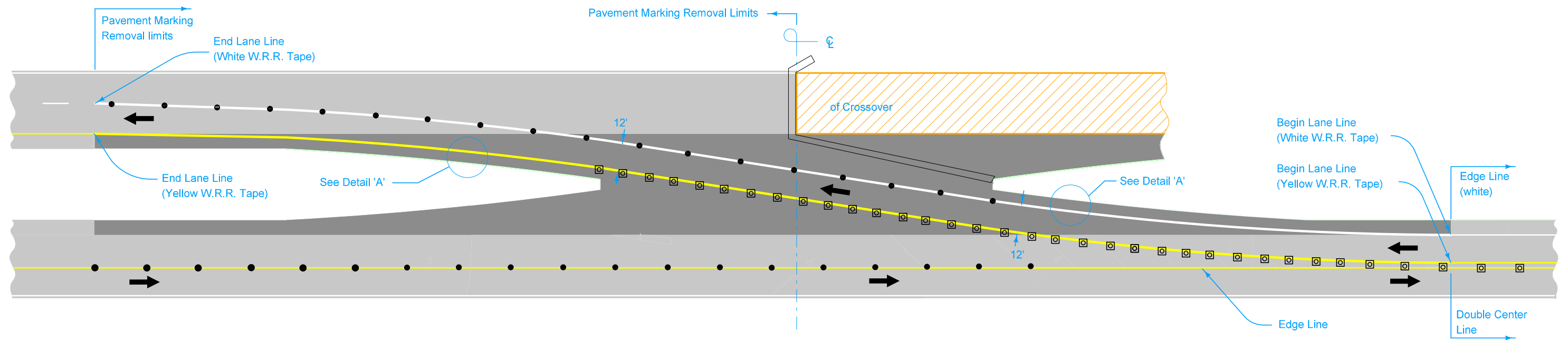
Place SPEED LIMIT AHEAD sign and SPEED LIMIT 55 sign prior to the lane closure as shown. Place SPEED LIMIT 65 or 70 beyond the work area as shown.

Remove or cover all existing signs that conflict with 55 mph speed limit while 55 mph speed limit is in effect.

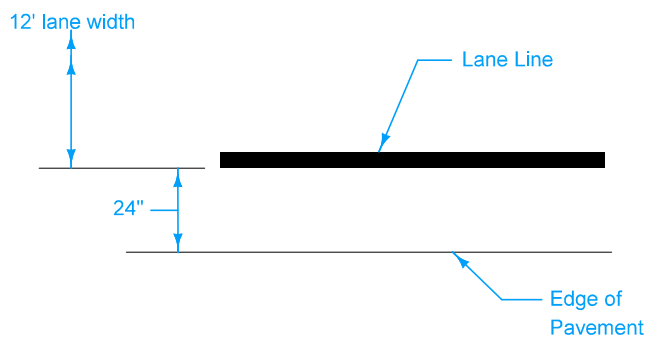
Place Speed Feedback Sign at the end of the merge taper.

- ⑦ Add below R11-2 already included in Safety Closure.

 STANDARD ROAD PLAN	REVISION	
	18	10-15-24
	TC-61	
SHEET 3 of 6		
REVISIONS: Removed line width dimension on page 4, Modified Channelizing Line to Lane Line.		
 APPROVED BY DESIGN METHODS ENGINEER		
TWO-LANE, TWO WAY OPERATION		



LEGEND	
x	Drum
•	42" Channelizer
	Work Area
	Direction of Traffic
	Detour Pavement
	Safety Closure (Refer to TC-252)
	Temporary Lane Separator System

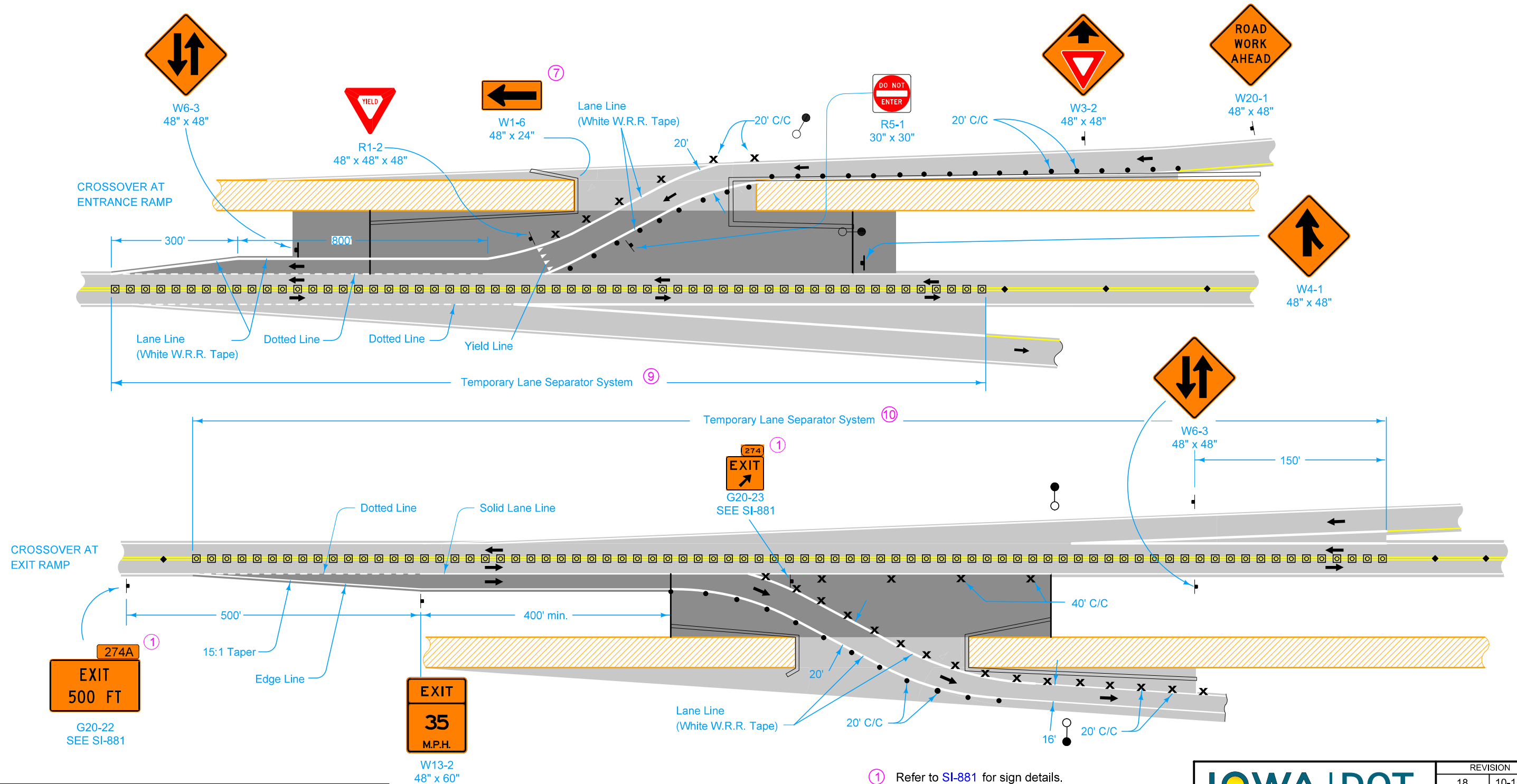


DETAIL 'A'
SUPPLEMENTAL CROSSOVER DRAWINGS ⑧

⑧ Details shown hereon are intended to provide additional information to the requirements shown on sheets 2 and 3.

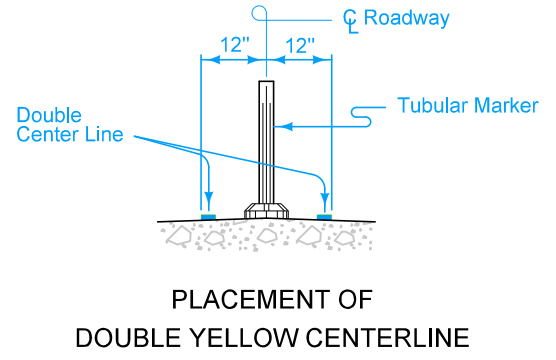
	REVISION
	18 10-15-24
	TC-61
STANDARD ROAD PLAN	SHEET 4 of 6
REVISIONS: Removed line width dimension on page 4, Modified Channelizing Line to Lane Line.	
 APPROVED BY DESIGN METHODS ENGINEER	
TWO-LANE, TWO WAY OPERATION	

RAMP LOCATIONS



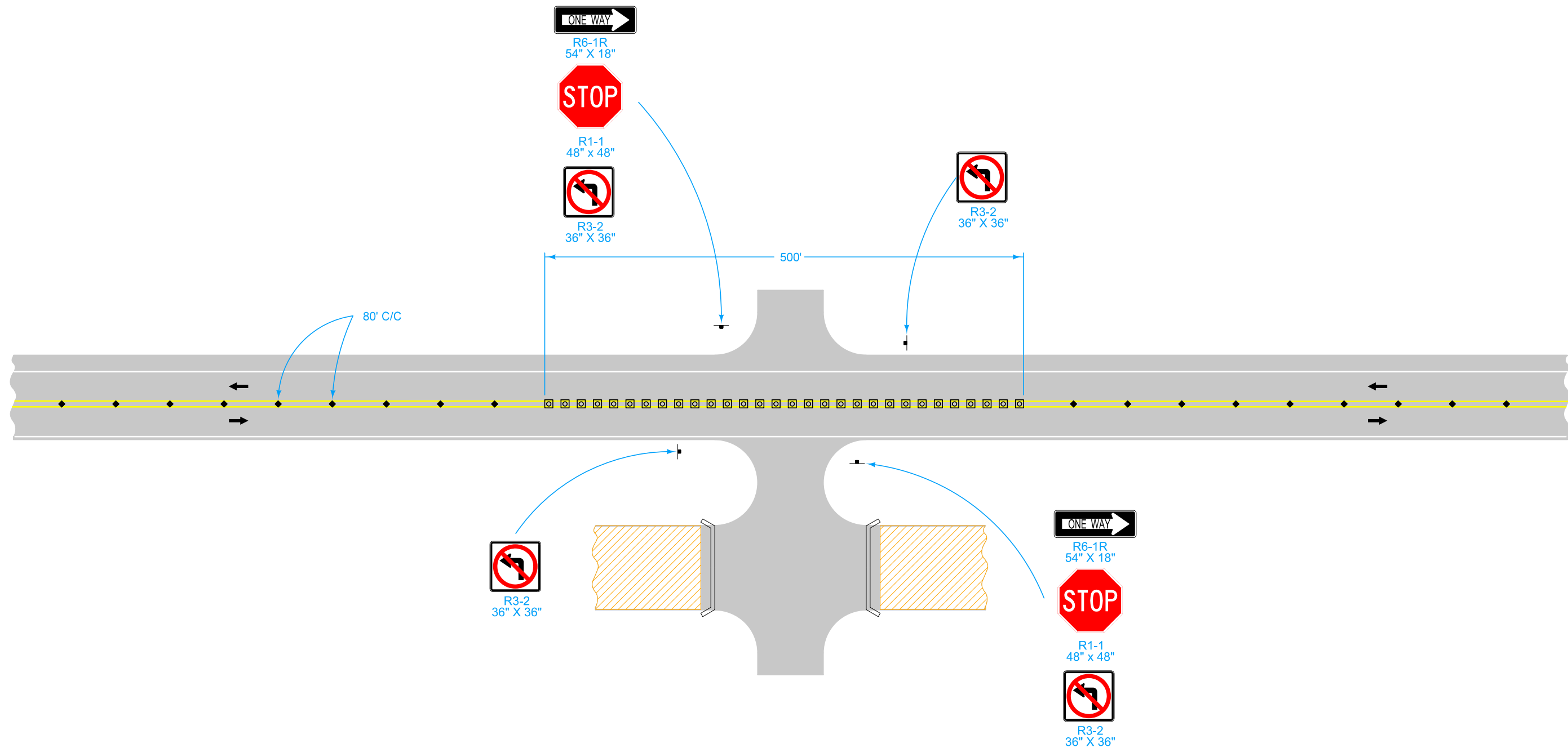
LEGEND

- Traffic Sign
- 42" Channelizer
- Drum
- Tubular Marker
- Temporary Floodlighting
- Temporary Lane Separator System
- Work Area
- Detour Pavement
- Direction of Traffic
- Safety Closure (Refer to TC-252)



- ① Refer to SI-881 for sign details.
- ⑦ Add below R11-2 already included in Safety Closure.
- ⑨ Place TLSS from start of ramp gore to end of temporary ramp crossover.
- ⑩ Place TLSS from start of full width decel lane to end of ramp gore.

<p>STANDARD ROAD PLAN</p>	REVISION	
	18	10-15-24
	<p>TC-61</p> <p>SHEET 5 of 6</p>	
<p>REVISIONS: Removed line width dimension on page 4, Modified Channelizing Line to Lane Line.</p>		
<p><i>Steve Miller</i></p> <p>APPROVED BY DESIGN METHODS ENGINEER</p>		
<p>TWO-LANE, TWO WAY OPERATION</p>		



Traffic Control for At-Grade Intersections
(Right-In, Right-Out)

LEGEND	
	Traffic Sign
	Tubular Marker
	Direction of Traffic
	Temporary Lane Separator System
	Work Area
	Safety Closure (Refer to TC-252)

	REVISION
	18 10-15-24
STANDARD ROAD PLAN	TC-61
	SHEET 6 of 6
REVISIONS: Removed line width dimension on page 4, Modified Channelizing Line to Lane Line.	
APPROVED BY DESIGN METHODS ENGINEER	
TWO-LANE, TWO WAY OPERATION	