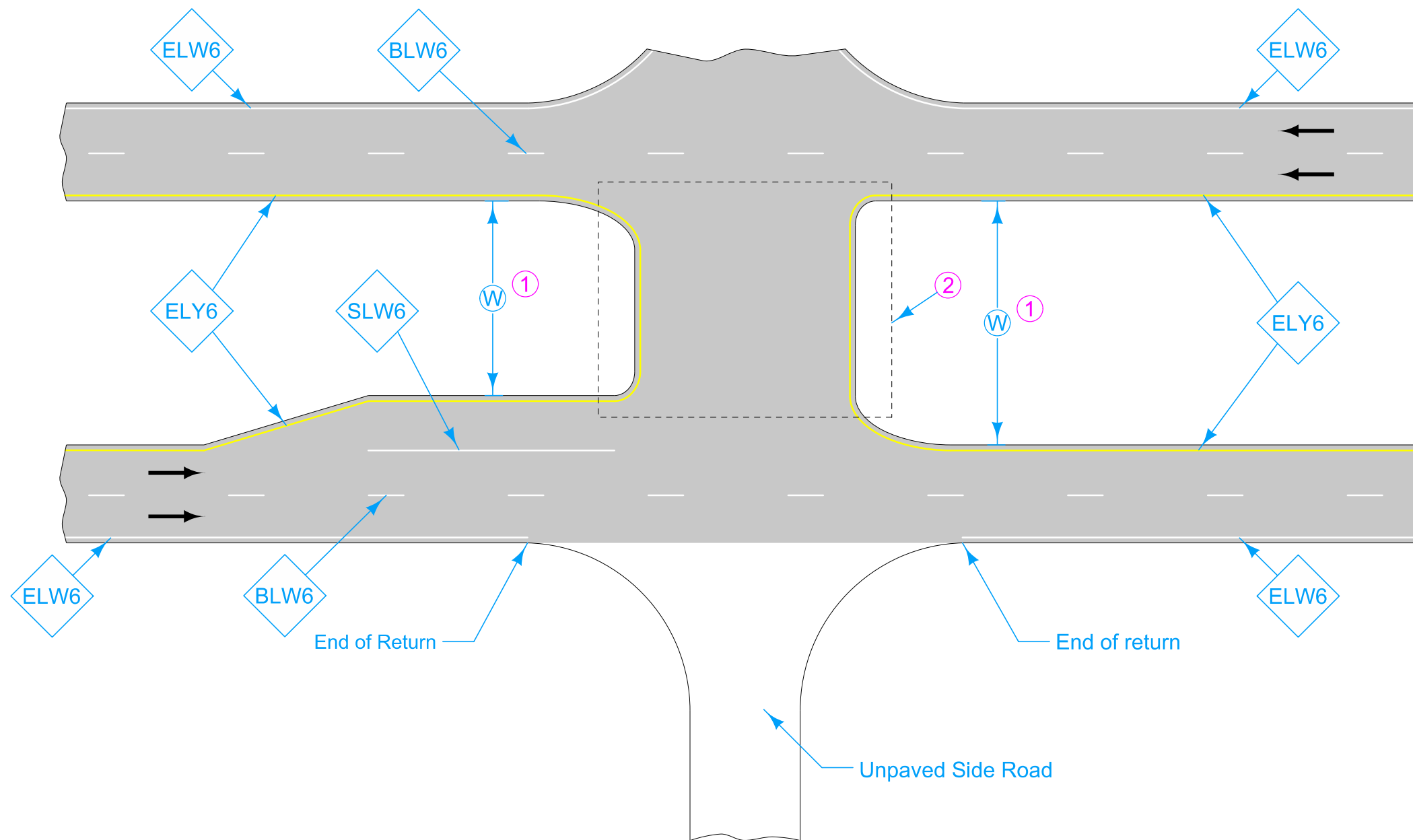


DESIGNER INFORMATION

For line information, see [PM-110](#).

For projects not on the Primary system the following substitutions may be made. See plan sheets for substitutions.

- ELW6 → ELW4
- ELY6 → ELY4
- BCY6 → BCY4
- NPY6 → NPY4
- DCY6 → DCY4
- BLW6 → BLW4
- SLW6 → SLW4



① W is the width between pavement edges. Measure W from pavement edge to pavement edge. When W values are different, use the smaller of the two.

② See [PM-760](#) for markings placed in the median.

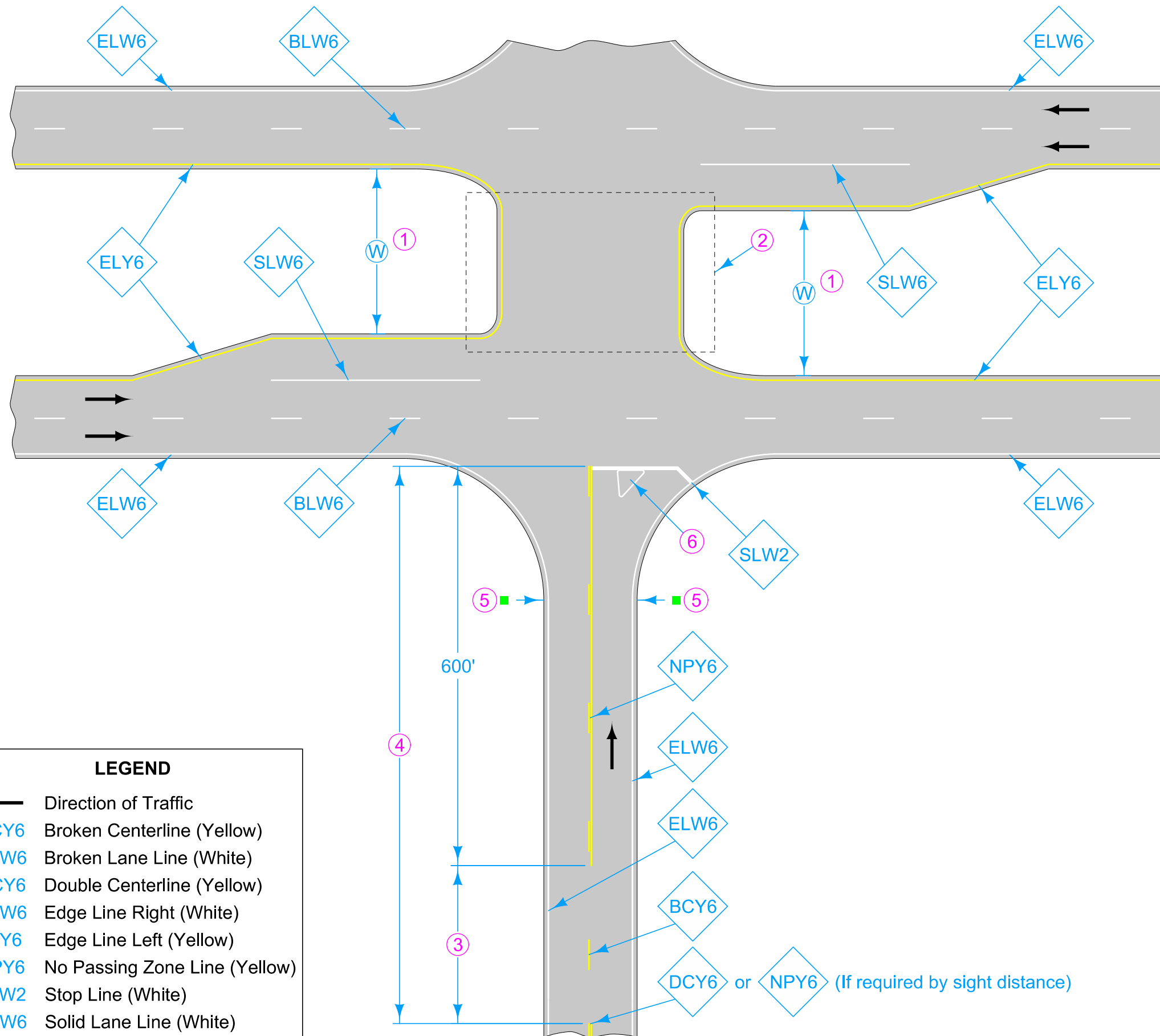
Possible Contract Item:
Pavement Marking Line Items

Possible Tabulation:
[108-29](#)

LEGEND	
←	Direction of Traffic
BLW6	Broken Lane Line (White)
ELW6	Edge Line Right (White)
ELY6	Edge Line Left (Yellow)
SLW6	Solid Lane Line (White)

UNPAVED SIDE ROAD

	REVISION	
	1	10-15-24
STANDARD ROAD PLAN		PM-562
REVISIONS: Modified line widths from 4 inches to 6 inches.		SHEET 1 of 2
 APPROVED BY DESIGN METHODS ENGINEER		
DIVIDED MULTI-LANE ROADWAY WITH LEFT TURN LANES		



- ① W is the width between pavement edges. Measure W from pavement edge to pavement edge. When W values are different, use the smaller of the two.
- ② See PM-760 for markings placed in the median.
- ③ If less than 400 feet, join Yellow Lines.
- ④ If less than 1000 feet, extend Yellow Line to Stop Line.
- ⑤ When the free flow roadway has edge lines but the stop controlled roadway does not, end edge lines at the end of returns (marked by ■s). If both roadways have edge lines, continue edge lines around the returns.
- ⑥ If Island present, see PM-120.

LEGEND	
←	Direction of Traffic
BCY6	Broken Centerline (Yellow)
BLW6	Broken Lane Line (White)
DCY6	Double Centerline (Yellow)
ELW6	Edge Line Right (White)
ELY6	Edge Line Left (Yellow)
NPY6	No Passing Zone Line (Yellow)
SLW2	Stop Line (White)
SLW6	Solid Lane Line (White)

TWO-LANE PAVED SIDE ROAD

	REVISION
	1 10-15-24
STANDARD ROAD PLAN	PM-562
REVISIONS: Modified line widths from 4 inches to 6 inches.	SHEET 2 of 2
 APPROVED BY DESIGN METHODS ENGINEER	
DIVIDED MULTI-LANE ROADWAY WITH LEFT TURN LANES	