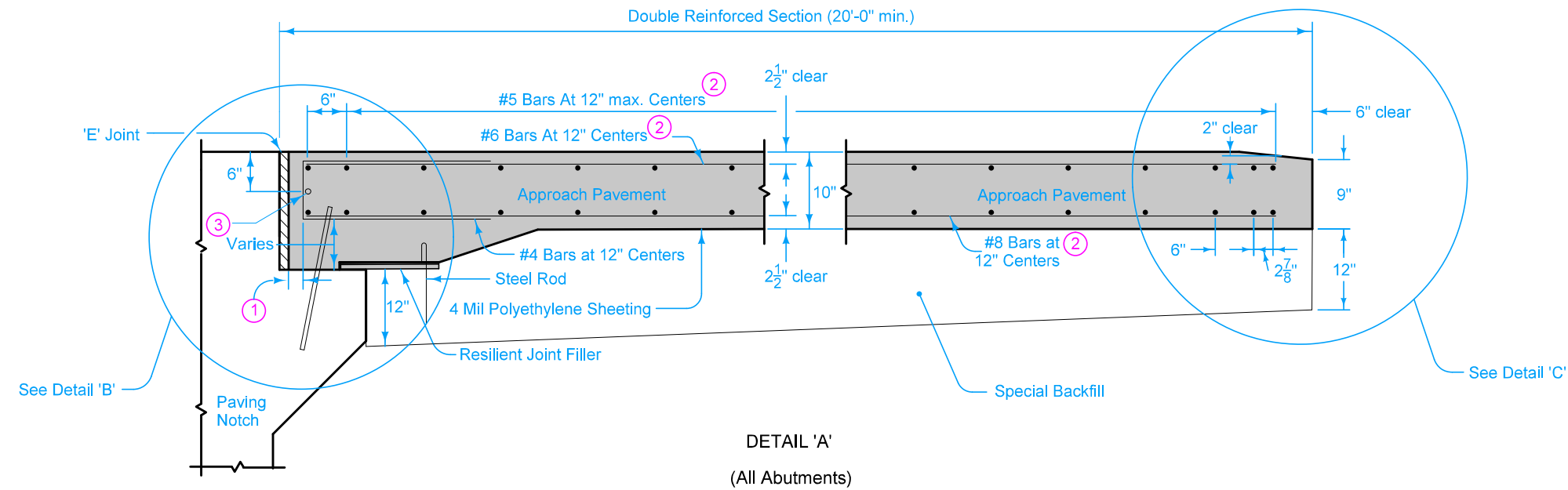


DESIGNER INFORMATION

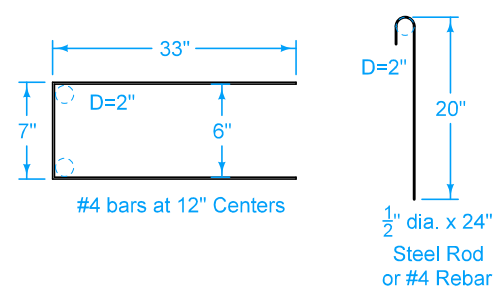
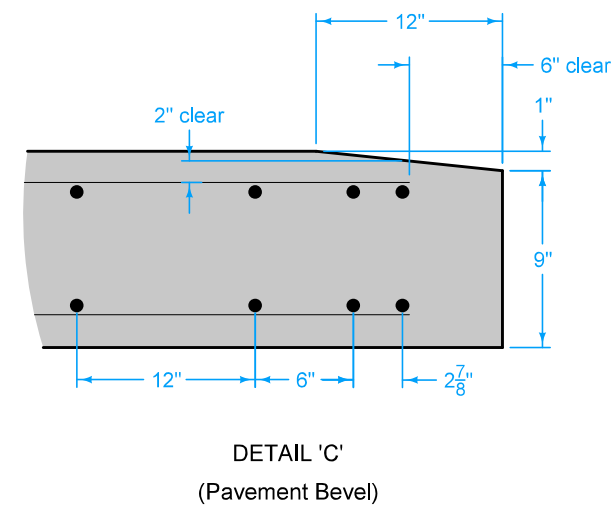
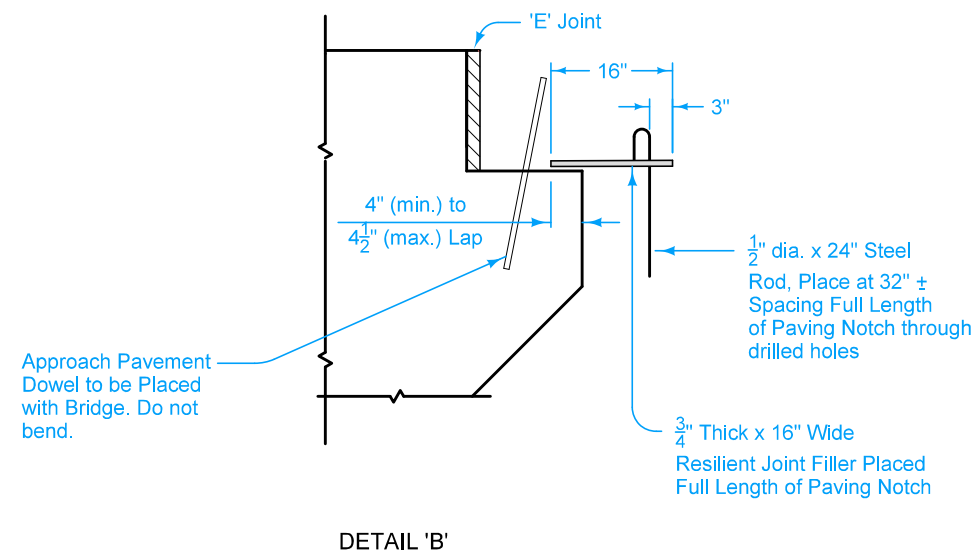
For joint details, refer to PV-101.

For curb details, see Detail 'F'.

All transverse bars are #5.



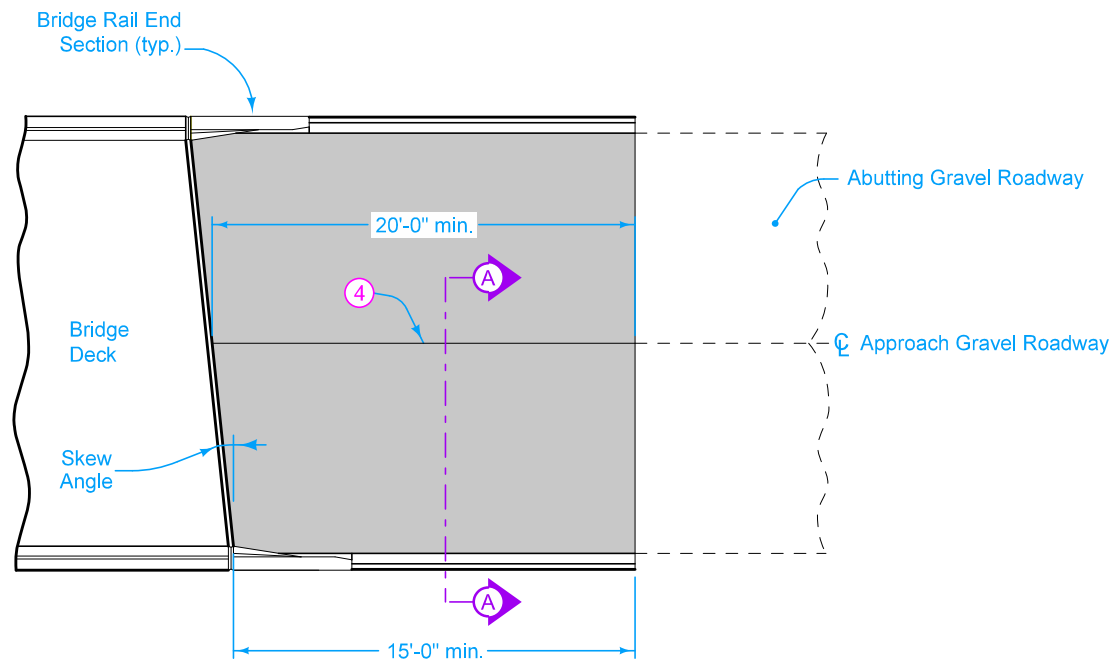
- ① 2" min. to 2 1/2" max. clear to bent bar.
- ② Minimum lap length: #5 Bars - 38"
#6 Bars - 45"
#8 Bars - 59"
- ③ If bridge is skewed, place additional #5 bar parallel to skewed face.



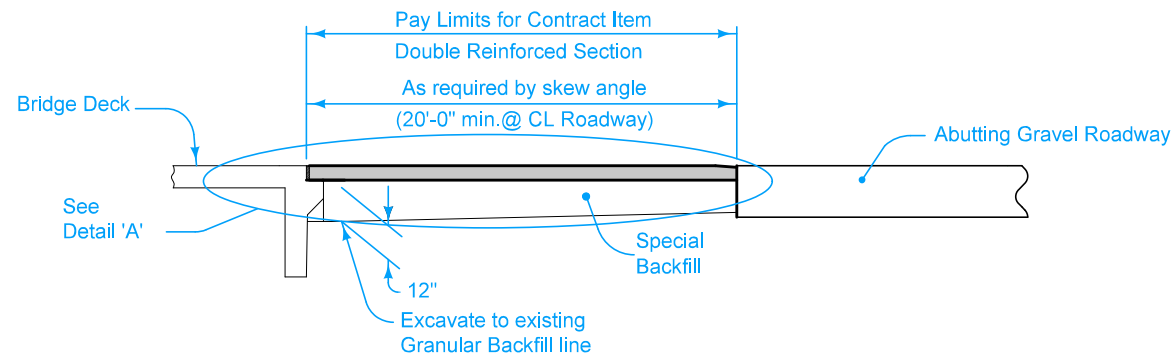
Possible Contract Item:
Bridge Approach, BR-241
Longitudinal Grooving in Concrete, Bridge Deck
Longitudinal Grooving in Concrete, Pavement

Possible Tabulation:
112-6

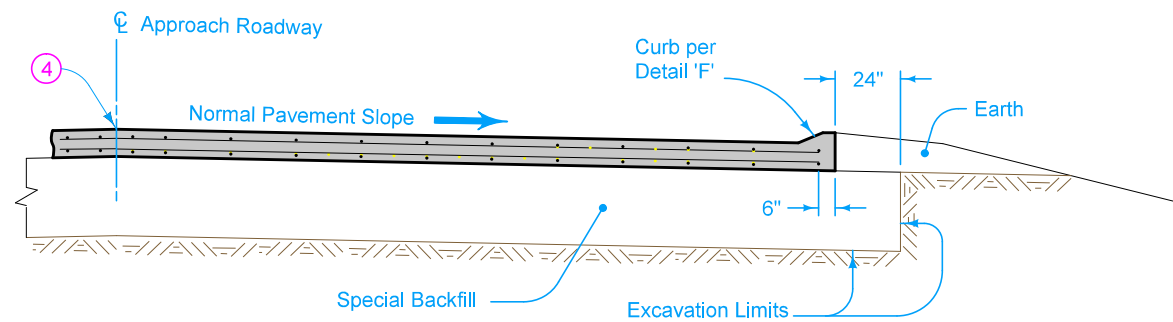
	REVISION	
	2	10-15-24
STANDARD ROAD PLAN		BR-241
		SHEET 1 of 3
REVISIONS: Added Longitudinal Grooving in Concrete to possible contract item.		
APPROVED BY DESIGN METHODS ENGINEER		
DOUBLE REINFORCED 10" APPROACH ON GRAVEL ROADS		



PLAN VIEW



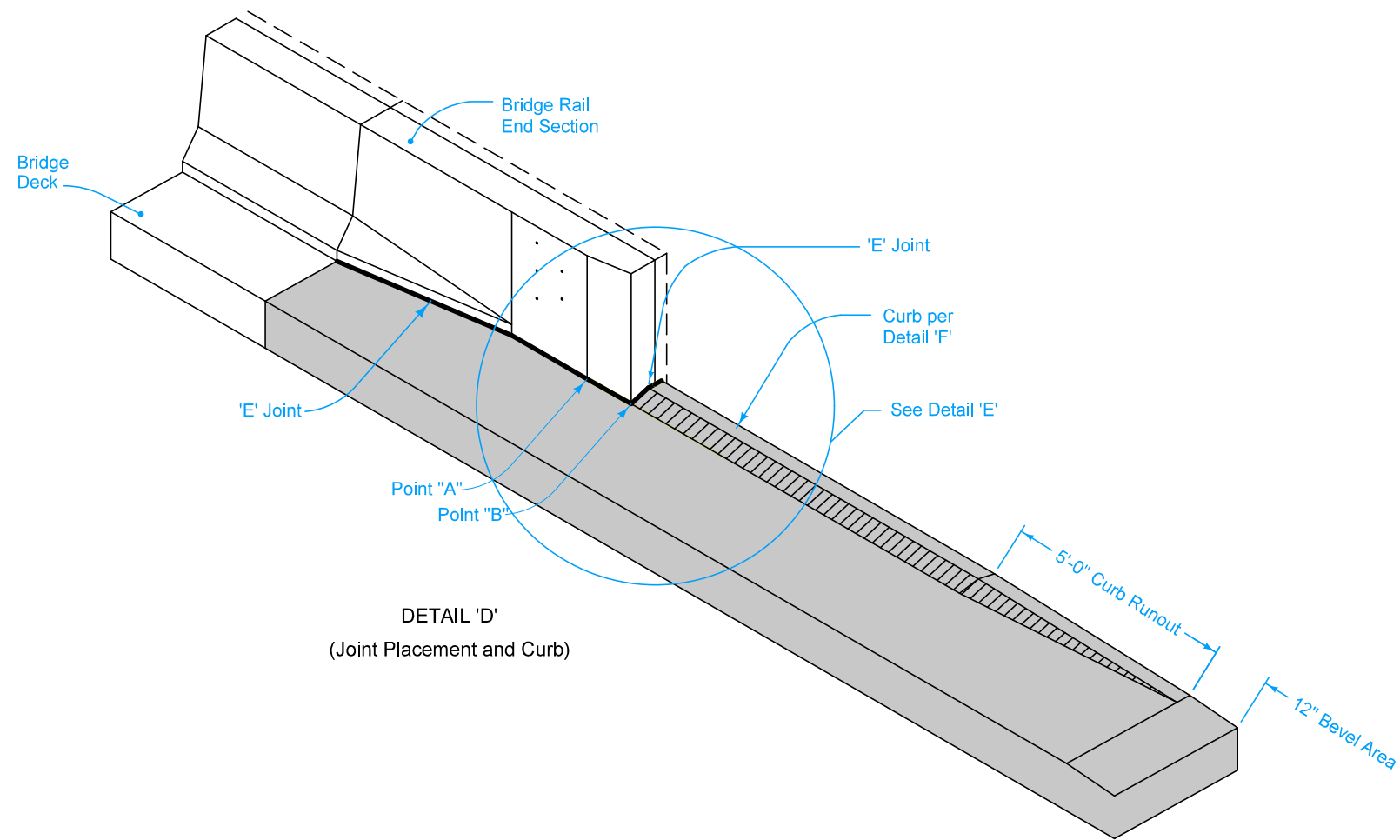
SECTION THRU CENTERLINE



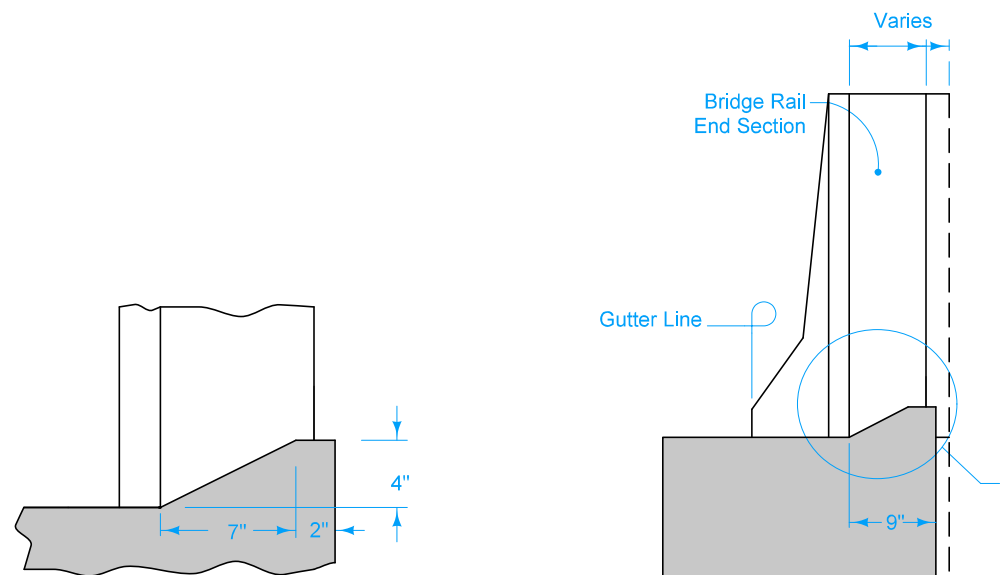
SECTION A-A

- 4 Longitudinal Joint (PV-101):
Single pour - Saw cut joint per Detail B.
Two pours - Use 'KS-2' joint.

	REVISION	
	2	10-15-24
STANDARD ROAD PLAN		BR-241
		SHEET 2 of 3
REVISIONS: Added Longitudinal Grooving in Concrete to possible contract item.		
APPROVED BY DESIGN METHODS ENGINEER		
DOUBLE REINFORCED 10" APPROACH ON GRAVEL ROADS		



DETAIL 'D'
(Joint Placement and Curb)



DETAIL 'G'

DETAIL 'E'
(Back of Curb Placement)

	REVISION	
	2	10-15-24
STANDARD ROAD PLAN	BR-241	
	SHEET 3 of 3	
REVISIONS: Added Longitudinal Grooving in Concrete to possible contract item.		
APPROVED BY DESIGN METHODS ENGINEER		
DOUBLE REINFORCED 10" APPROACH ON GRAVEL ROADS		