

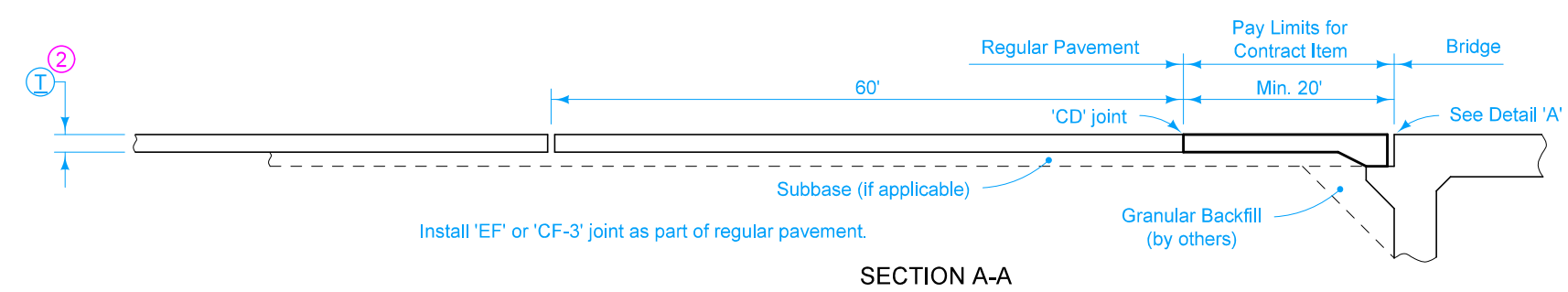
PLAN

Use the same concrete for the bridge approach section as is used for the remainder of the project pavement.

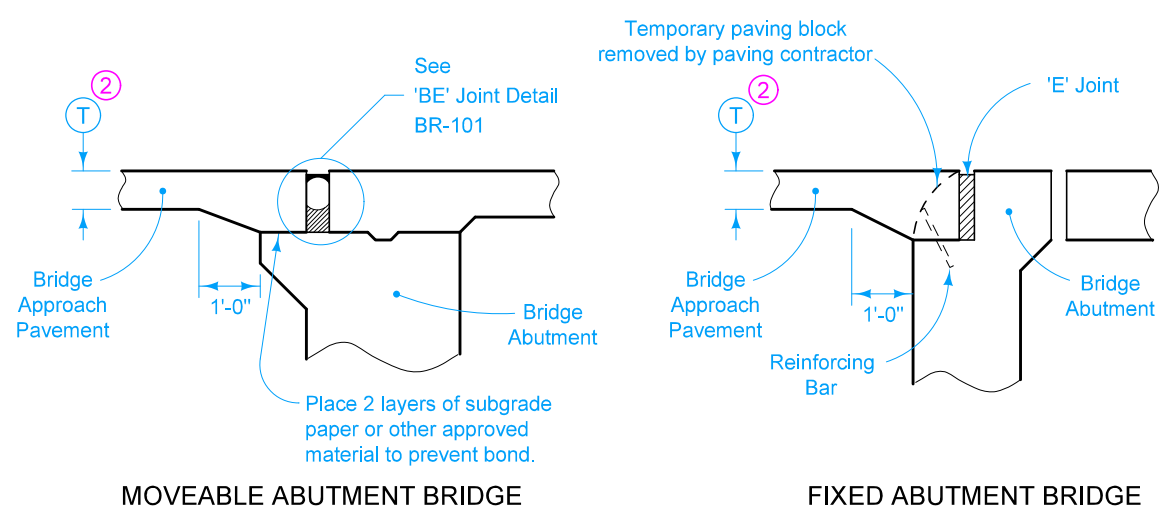
For joint details, see PV-101.

- ① If bridge is skewed, place additional #5 bar parallel to skewed face.
- ② T is the same thickness as is required for the remainder of the project pavement.

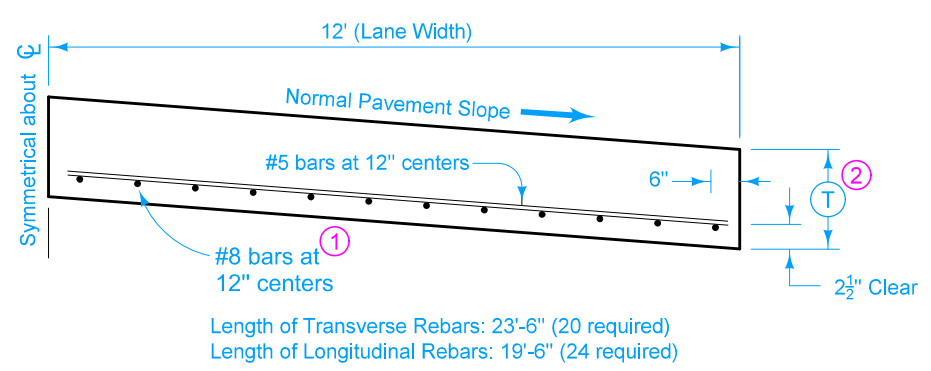
Quantity for 20 foot long approach section for 24 foot pavement is 53.33 square yards of "Bridge Approach."



SECTION A-A



DETAIL 'A'



TYPICAL HALF SECTION B

- Possible Contract Items:
- Bridge Approach, Secondary Roads
 - Standard or Slip-Form PCC Pavement
 - Longitudinal Grooving in Concrete, Bridge Deck
 - Longitudinal Grooving in Concrete, Pavement

Possible Tabulation:
112-6

 STANDARD ROAD PLAN	REVISION	
	1	10-15-24
	BR-121	
SHEET 1 of 1		
REVISIONS: Added Longitudinal Grooving in Concrete to possible contract item. Added note referring to 'BE' joint.		
 APPROVED BY DESIGN METHODS ENGINEER		

**BRIDGE APPROACH DETAILS
(SECONDARY ROADS)**