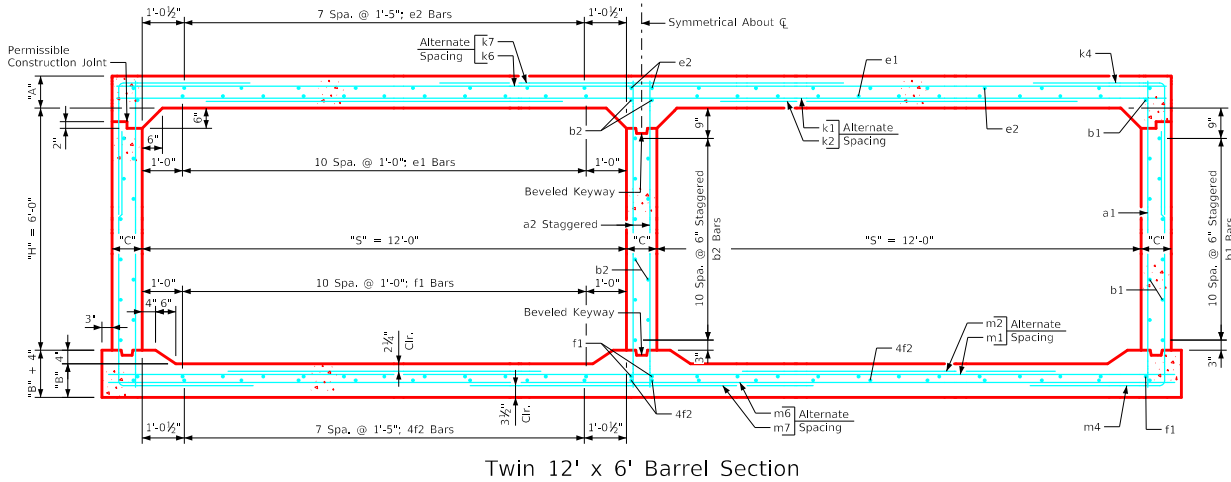
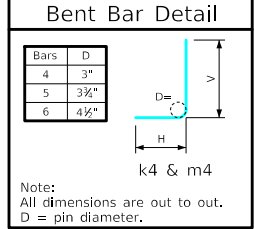


Variable Dimensions and Quantities for Twin 12' x 6' Barrel Sections

Dimensions													Bar List																																											
Fill	S	H	A	B	C	D	E	U	W	X	Z	a1			a2			b1			b2			e1			e2			f1			f2			k1			k2			k4			k6			k7			k9					
												Size	Sp.	L	Size	Sp.	L	Size	Sp.	No.	Size	Sp.	No.	Size	Sp.	No.	Size	Sp.	No.	Size	Sp.	No.	Size	Sp.	No.	Size	Sp.	No.	Size	Sp.	No.	Size	Sp.	No.	Size	Sp.	No.	Size	Sp.	No.	Size	Sp.	No.	Size	Sp.	No.
0	12	6	14	12	9	9	9	0'-2	7'-5	2'-6	6'-5	4	12	8'-1	6	9	8'-1	4	6	24	4	6	13	4	12	22	4	17	20	4	12	26	4	17	20	6	18	25'-11	6	18	12'-9	5	9	7'-2	3'-7	3'-7	4	12	25'-11	5	12	14'-10	5	4.5	25'-11	
1	12	6	13.5	11.5	9	9	9	0'-8	7'-2	2'-6	5'-7	4	9	8'-0	6	9	8'-0	4	6	24	4	6	13	4	12	22	4	17	20	4	12	26	4	17	20	6	18	25'-11	6	18	12'-3	5	9	7'-2	3'-7	3'-7	4	9	25'-11	4	9	14'-4	4	4.5	25'-11	
2	12	6	10	10	9	6	9	2'-0	6'-5	3'-2	4'-7	4	6	7'-7	6	9	7'-7	4	6	24	4	6	13	5	12	22	4	17	20	4	12	26	4	17	20	6	12	25'-11	5	12	10'-3	6	9	7'-4	3'-8	3'-8	5	12	25'-11	6	12	12'-10	6	4.5	25'-11	
3	12	6	9	10	9	9	9	2'-7	5'-4	3'-6	4'-4	4	9	7'-6	6	9	7'-6	4	6	24	4	6	13	4	12	22	4	17	20	4	12	26	4	17	20	6	12	25'-11	5	12	8'-8	6	9	7'-2	3'-7	3'-7	4	12	25'-11	7	12	10'-8	7	4.5	25'-11	
4	12	6	9	10	9	9	9	2'-10	4'-8	3'-6	4'-3	4	9	7'-6	6	9	7'-6	4	6	24	4	6	13	4	12	22	4	17	20	4	12	26	4	17	20	5	9	25'-11	4	9	8'-3	6	9	7'-2	3'-7	3'-7	5	9	25'-11	5	9	9'-4	5	4.5	25'-11	
5-7	12	6	9.5	11	9	9	9	3'-1	4'-6	3'-3	4'-2	4	12	7'-7	6	9	7'-7	4	6	24	4	6	13	4	12	22	4	17	20	4	12	26	4	17	20	5	9	25'-11	4	9	8'-0	5	6	6'-6	3'-3	3'-3	5	9	25'-11	6	9	9'-0	6	4.5	25'-11	
8-10	12	6	11	13	9	9	9	3'-0	4'-2	3'-3	4'-2	4	12	7'-11	6	9	7'-11	4	6	24	4	6	13	4	12	22	4	17	20	4	12	26	4	17	20	5	9	25'-11	4	9	8'-5	5	6	6'-0	2'-8	3'-4	5	9	25'-11	6	9	8'-4	6	4.5	25'-11	
11-13	12	6	13	15	9	9	9	2'-11	4'-3	2'-11	4'-3	5	12	8'-3	6	9	8'-3	4	6	24	4	6	13	4	12	22	4	17	20	4	12	26	4	17	20	5	9	25'-11	4	9	9'-2	4	6	5'-8	2'-6	3'-2	4	9	25'-11	7	9	8'-6	7	4.5	25'-11	
14-16	12	6	14.5	16.5	9	9	9	2'-4	4'-4	2'-6	4'-5	4	9	8'-6	6	9	8'-6	4	6	24	4	6	13	4	12	22	4	17	20	4	12	26	4	17	20	7	18	25'-11	6	18	10'-5	4	6	5'-9	2'-6	3'-3	5	12	25'-11	8	12	8'-8	8	4.5	25'-11	
17-19	12	6	16	18.5	9	9	9	2'-3	4'-5	2'-2	4'-7	4	9	8'-9	6	9	8'-9	4	6	24	4	6	13	4	12	22	4	17	20	4	12	26	4	17	20	6	12	25'-11	5	12	10'-8	4	6	5'-11	2'-7	3'-4	5	9	25'-11	7	9	8'-10	7	4.5	25'-11	
20-22	12	6	18	20	9	9	9	1'-9	4'-7	1'-7	4'-8	4	12	9'-1	6	9	9'-1	4	6	24	4	6	13	4	12	22	4	17	20	4	12	26	4	17	20	6	12	25'-11	5	12	11'-2	4	6	6'-3	2'-8	3'-7	5	9	25'-11	7	9	9'-2	7	4.5	25'-11	
23-25	12	6	19.5	21.5	9	9	9	1'-7	4'-8	1'-9	4'-10	4	12	9'-4	6	9	9'-4	4	6	24	4	6	13	4	12	22	4	17	20	5	12	26	4	17	20	6	12	25'-11	5	12	11'-4	4	6	6'-5	2'-9	3'-8	5	9	25'-11	7	9	9'-4	7	4.5	25'-11	

Fill	Bar List																											Quantities																
	m1			m2			m4			m6			m7			m9			Concrete (CY/FT)		Slab	Floor	Walls	Total	Steel (LB/FT)																			
	Size	Sp.	L	Size	Sp.	L	Size	Sp.	L	H	V	Size	Sp.	L	Size	Sp.	L	Size	Sp.	L	Size	Sp.	L	Size	Sp.	L	Size	Sp.	L	Size	Sp.	L	Size	Sp.	L	Size	Sp.	L	Size	Sp.	L	Size	Sp.	L
0	5	12	26'-5	5	12	9'-5	6	9	12'-4	5'-11	6'-5	5	12	26'-5	5	12	11'-2	5	4.5	26'-5	1.191	1.050	0.465	2.706	361.66																			
1	5	12	26'-5	5	12	9'-0	6	9	11'-0	4'-7	6'-5	4	12	26'-5	6	12	11'-2	6	4.5	26'-5	1.151	1.008	0.465	2.624	354.13																			
2	5	9	26'-5	5	9	7'-10	6	9	9'-9	3'-6	6'-3	4	9	26'-5	6	9	9'-2	6	4.5	26'-5	0.867	0.885	0.465	2.217	412.39																			
3	6	12	26'-5	5	12	7'-0	6	9	9'-8	3'-5	6'-2	5	9	26'-5	5	9	8'-8	5	4.5	26'-5	0.786	0.885	0.465	2.136	390.61																			
4	6	12	26'-5	5	12	7'-0	6	9	9'-7	3'-4	6'-3	5	12	26'-5	7	12	8'-6	7	4.5	26'-5	0.786	0.885	0.465	2.136	388.76																			
5-7	6	12	26'-5	5	12	7'-9	5	6	9'-6	3'-2	6'-4	5	9	26'-5	6	9	8'-4	6	4.5	26'-5	0.826	0.967	0.465	2.258	397.00																			
8-10	5	9	26'-5	4	9	8'-5	5	6	9'-2	2'-8	6'-6	5	9	26'-5	6	9	8'-4	6	4.5	26'-5	0.948	1.132	0.465	2.545	388.53																			
11-13	5	9	26'-5	4	9	9'-2	4	6	9'-3	2'-7	6'-8	5	9	26'-5	6	9	8'-6	6	4.5	26'-5	1.110	1.297	0.465	2.872	370.21																			
14-16	6	12	26'-5	5	12	10'-2	4	6	9'-5	2'-7	6'-10	4	9	26'-5	7	9	8'-10	7	4.5	26'-5	1.232	1.421	0.465	3.118	386.08																			
17-19	6	12	26'-5	5	12	10'-10	4	6	9'-8	2'-8	7'-0	5	12	26'-5	8	12	9'-2	8	4.5	26'-5	1.353	1.586	0.465	3.404	406.26																			
20-22	7	18	26'-5	7	18	11'-5	4	6	9'-10	2'-9	7'-1	5	9	26'-5	7	9	9'-4	7	4.5	26'-5	1.515	1.710	0.465	3.690	421.26																			
23-25	6	12	26'-5	5	12	11'-3	4	6	10'-1	2'-10	7'-3	5	9	26'-5	7	9	9'-8	7	4.5	26'-5	1.637	1.834	0.465	3.936	428.84																			



- Notes:
- Dimensions listed on this sheet to be used in conjunction with Sheet TWRBCB G3-20.
 - Fill, dimensions "S" and "H" are in feet.
 - Dimensions "A", "B", "C", "D", and "Sp." listed in the bar list are in inches.
 - Dimensions "L", "H", "V" are in feet and inches.

LATEST REVISION DATE	 Highway Division Standard Design Twin Reinforced Concrete Box Culverts July, 2020	Culvert Barrel Details	TWRBCB 12-6-20
		12' x 6' Barrel Sections	
		APPROVED BY BRIDGE ENGINEER	

ENGLISHLRFDDESIGNEDTWINCULVERTS.DGN - TWRBCB 12-6-20 - THIS SHEET ISSUED 07-2020.