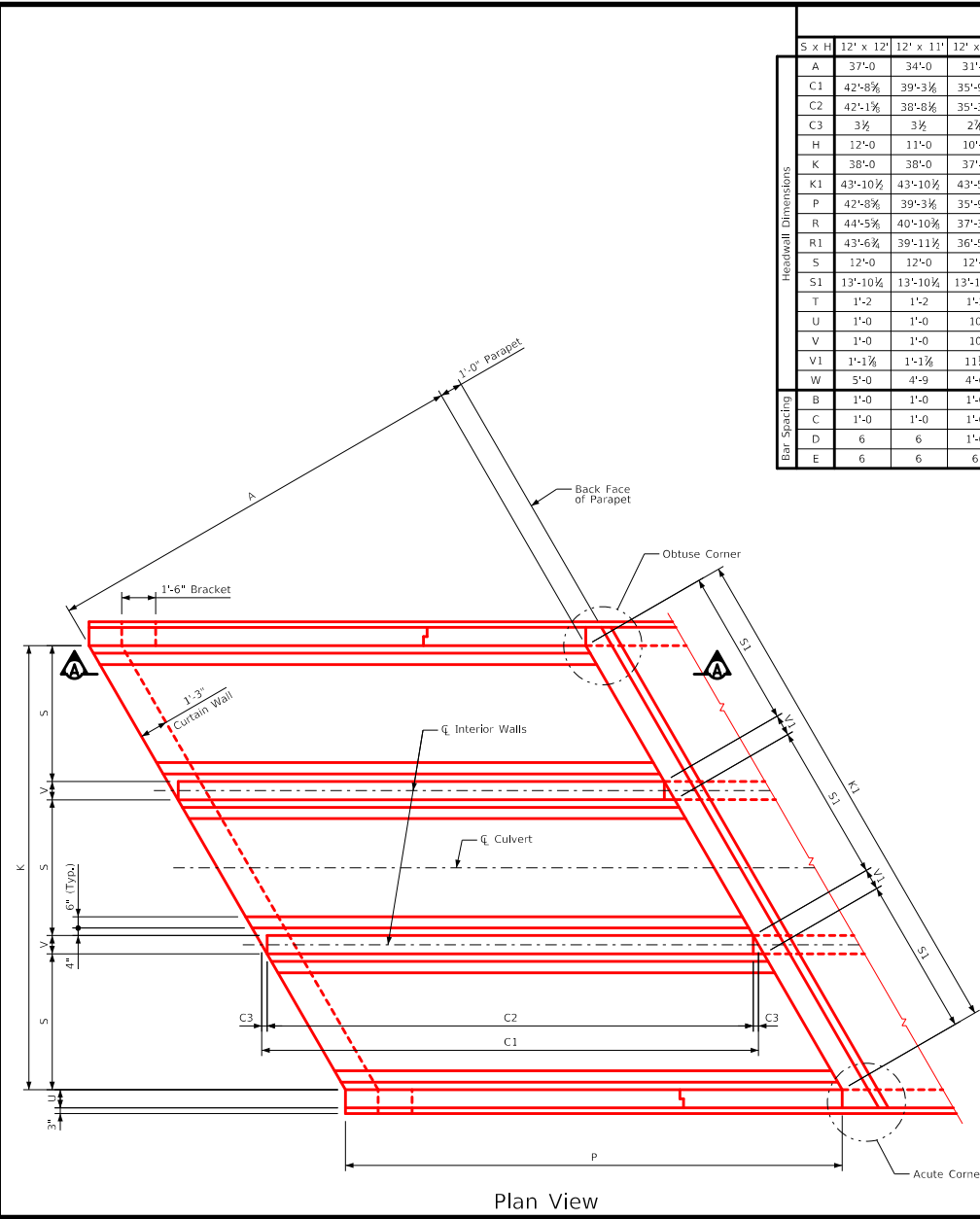
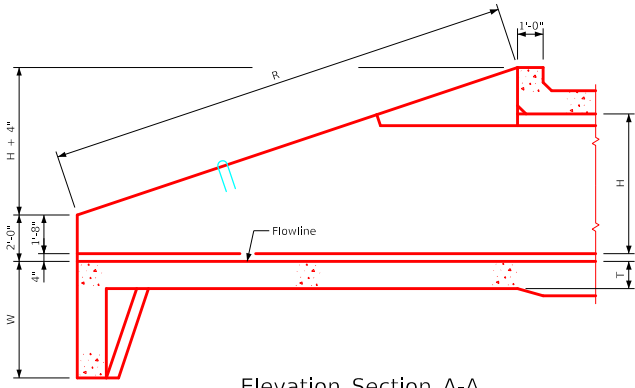


ENGLISHRFDDESIGNEDTRIPLECULVERTS.DGN - TRPWH 30-1-20 - THIS SHEET ISSUED 07-2020.



		Dimension Table																			
S x H		12' x 12'	12' x 11'	12' x 10'	12' x 9'	12' x 8'	12' x 7'	12' x 6'	12' x 5'	12' x 4'	10' x 12'	10' x 11'	10' x 10'	10' x 9'	10' x 8'	10' x 7'	10' x 6'	10' x 5'	10' x 4'	S x H	
A	37'-0"	34'-0"	31'-0"	28'-0"	25'-0"	22'-0"	19'-0"	16'-0"	13'-0"	10'-0"	37'-0"	34'-0"	31'-0"	28'-0"	25'-0"	22'-0"	19'-0"	16'-0"	13'-0"	A	
C1	42'-8 1/2"	39'-3 3/8"	35'-9 1/2"	32'-4"	28'-10 1/2"	25'-4 1/2"	21'-11 1/2"	18'-5 1/2"	15'-0 1/2"	11'-6 1/2"	42'-8 1/2"	39'-3 3/8"	35'-9 1/2"	32'-4"	28'-10 1/2"	25'-4 1/2"	21'-11 1/2"	18'-5 1/2"	15'-0 1/2"	C1	
C2	42'-1 1/2"	38'-8 1/8"	35'-3 3/8"	31'-10 1/2"	28'-4 1/4"	24'-11 1/8"	21'-6"	18'-0 1/2"	14'-6 1/2"	11'-1 1/2"	42'-1 1/2"	38'-8 1/8"	35'-3 3/8"	31'-10 1/2"	28'-4 1/4"	24'-11 1/8"	21'-6"	18'-0 1/2"	14'-6 1/2"	C2	
C3	3 1/2"	3 1/2"	2 1/2"	2 1/2"	2 1/2"	2 1/2"	2 1/2"	2 1/2"	2 1/2"	3 1/2"	3 1/2"	2 1/2"	2 1/2"	2 1/2"	2 1/2"	2 1/2"	2 1/2"	2 1/2"	2 1/2"	C3	
H	12'-0"	11'-0"	10'-0"	9'-0"	8'-0"	7'-0"	6'-0"	5'-0"	4'-0"	12'-0"	11'-0"	10'-0"	9'-0"	8'-0"	7'-0"	6'-0"	5'-0"	4'-0"	12'-0"	H	
K	38'-0"	38'-0"	37'-8"	37'-8"	37'-8"	37'-6"	37'-6"	37'-6"	37'-6"	37'-6"	32'-0"	32'-0"	31'-8"	31'-8"	31'-8"	31'-6"	31'-6"	31'-6"	31'-6"	K	
K1	43'-10 1/2"	43'-10 1/2"	43'-5 1/2"	43'-5 1/2"	43'-5 1/2"	43'-3 1/2"	43'-3 1/2"	43'-3 1/2"	43'-3 1/2"	36'-11 1/2"	36'-11 1/2"	36'-6 1/2"	36'-6 1/2"	36'-6 1/2"	36'-4 1/2"	36'-4 1/2"	36'-4 1/2"	36'-4 1/2"	36'-4 1/2"	K1	
P	42'-8 1/2"	39'-3 3/8"	35'-9 1/2"	32'-4"	28'-10 1/2"	25'-4 1/2"	21'-11 1/2"	18'-5 1/2"	15'-0 1/2"	11'-6 1/2"	42'-8 1/2"	39'-3 3/8"	35'-9 1/2"	32'-4"	28'-10 1/2"	25'-4 1/2"	21'-11 1/2"	18'-5 1/2"	15'-0 1/2"	P	
R	44'-5 1/2"	40'-10 1/2"	37'-3 3/8"	33'-7 1/2"	30'-0 1/2"	26'-5 1/2"	22'-10 1/2"	19'-2 1/2"	15'-7 1/2"	11'-1 1/2"	44'-5 1/2"	40'-10 1/2"	37'-3 3/8"	33'-7 1/2"	30'-0 1/2"	26'-5 1/2"	22'-10 1/2"	19'-2 1/2"	15'-7 1/2"	R	
R1	43'-6 1/2"	39'-11 1/2"	36'-5 1/2"	32'-10 1/2"	29'-2 1/2"	25'-8 1/2"	22'-1"	18'-5 1/2"	14'-10 1/2"	11'-6 1/2"	43'-6 1/2"	39'-11 1/2"	36'-5 1/2"	32'-10 1/2"	29'-2 1/2"	25'-8 1/2"	22'-1"	18'-5 1/2"	14'-10 1/2"	R1	
S	12'-0"	12'-0"	12'-0"	12'-0"	12'-0"	12'-0"	12'-0"	12'-0"	12'-0"	12'-0"	10'-0"	10'-0"	10'-0"	10'-0"	10'-0"	10'-0"	10'-0"	10'-0"	10'-0"	S	
S1	13'-10 1/2"	13'-10 1/2"	13'-10 1/2"	13'-10 1/2"	13'-10 1/2"	13'-10 1/2"	13'-10 1/2"	13'-10 1/2"	13'-10 1/2"	13'-10 1/2"	11'-6 1/2"	11'-6 1/2"	11'-6 1/2"	11'-6 1/2"	11'-6 1/2"	11'-6 1/2"	11'-6 1/2"	11'-6 1/2"	11'-6 1/2"	S1	
T	1'-2"	1'-2"	1'-2"	1'-2"	1'-2"	1'-2"	1'-2"	1'-2"	1'-2"	1'-1"	1'-1"	1'-1"	1'-1"	1'-1"	1'-1"	1'-1"	1'-1"	1'-1"	1'-1"	T	
U	1'-0"	1'-0"	10"	10"	10"	9"	9"	9"	9"	1'-0"	1'-0"	1'-0"	10"	10"	10"	9"	9"	9"	9"	U	
V	1'-0"	1'-0"	10"	10"	10"	9"	9"	9"	9"	1'-0"	1'-0"	10"	10"	10"	10"	9"	9"	9"	9"	V	
V1	1'-1 1/2"	1'-1 1/2"	11 1/2"	11 1/2"	11 1/2"	10 1/2"	10 1/2"	10 1/2"	10 1/2"	1'-1 1/2"	1'-1 1/2"	11 1/2"	11 1/2"	11 1/2"	10 1/2"	10 1/2"	10 1/2"	10 1/2"	10 1/2"	V1	
W	5'-0"	4'-9"	4'-6"	4'-3"	4'-0"	3'-9"	3'-6"	3'-6"	3'-6"	3'-6"	5'-0"	4'-9"	4'-6"	4'-3"	4'-0"	3'-9"	3'-6"	3'-6"	3'-6"	W	
B	1'-0"	1'-0"	1'-0"	1'-0"	1'-0"	1'-0"	1'-0"	9"	9"	1'-0"	1'-0"	1'-0"	1'-0"	1'-0"	1'-0"	1'-0"	1'-0"	1'-0"	1'-0"	B	
C	1'-0"	1'-0"	1'-0"	1'-0"	1'-0"	9"	9"	9"	9"	1'-0"	1'-0"	1'-0"	1'-0"	1'-0"	9"	9"	9"	9"	1'-0"	C	
D	6"	6"	1'-0"	1'-0"	1'-0"	1'-0"	1'-0"	9"	1'-0"	6"	6"	6"	6"	1'-0"	1'-0"	1'-0"	1'-0"	1'-0"	1'-0"	D	
E	6"	6"	6"	6"	6"	6"	6"	6"	6"	9"	9"	9"	9"	9"	9"	9"	9"	9"	9"	E	



Elevation Section A-A

- Notes:
1. See Sheet TRRCB G2-20 for General Notes, Specifications, and Design Stresses.
 2. See Sheets TRPWH 30-2-20 thru 30-5-20 for location of certain dimensions tabulated.
 3. Dimensions are in feet and inches unless otherwise noted.

LATEST REVISION DATE	APPROVED BY BRIDGE ENGINEER	IOWADOT Highway Division	
		Standard Design - Triple Reinforced Concrete Box Culverts	
		Parallel Wing Headwalls	
		July, 2020	
		Dimension Table 30° Skew	TRPWH 30-1-20