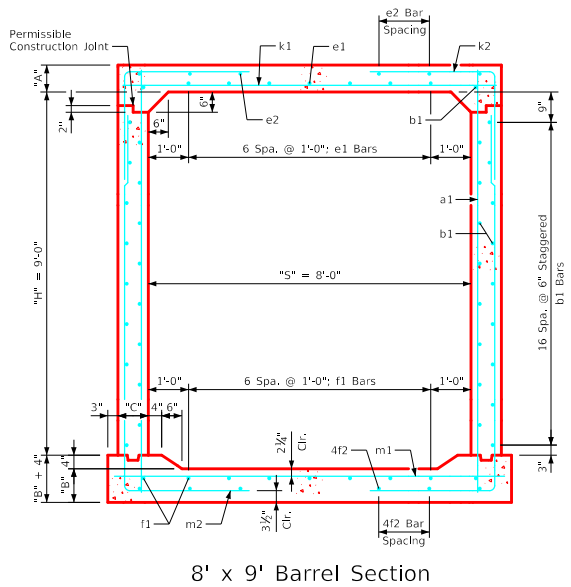
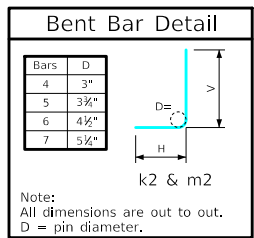


Variable Dimensions and Quantities for 8' x 9' Barrel Sections

Dimensions										Bar List																				Quantities																			
Fill	S	H	A	B	C	D	a1		b1		e1		e2		f1		f2		k1				k2				k9		m1		m2				m9				Concrete (CY/FT)				Steel (LB/FT)						
0	8	9	12.5	11	9	6	Size	Sp.	L	Size	Sp.	No.	Size	Sp.	No.	Size	Sp.	No.	Size	Sp.	No.	Size	Sp.	L	Size	Sp.	L	H	V	Size	L	Size	Sp.	L	Size	Sp.	L	Size	Sp.	L	Size	Sp.	L	Slab	Floor	Walls	Total		
1	8	9	10.5	11	9	9	5	12	10'-8"	4	6	36	5	12	7	4	13	8	4	12	9	4	13	8	6	9	9'-2"	4	6	8'-4"	5'-5"	3'-1"	-	-	5	6	9'-8"	4	6	14'-9"	5'-5"	9'-4"	-	-	0.399	0.376	0.479	1.254	179.11
2	8	9	8	10	9	6	4	6	10'-5"	4	6	36	5	12	7	4	13	8	4	12	9	4	13	8	7	9	9'-2"	4	6	8'-2"	5'-5"	2'-9"	-	-	6	6	9'-8"	4	6	14'-8"	5'-5"	9'-3"	-	-	0.267	0.345	0.479	1.091	192.82
3	8	9	8	10	9	9	5	12	10'-5"	4	6	36	4	12	7	4	13	8	4	12	9	4	13	8	6	9	9'-2"	4	6	8'-2"	5'-5"	2'-9"	-	-	7	9	9'-8"	4	6	14'-8"	5'-5"	9'-3"	-	-	0.267	0.345	0.479	1.091	172.79
4-8	8	9	8	10	9	9	5	12	10'-5"	4	6	36	4	12	7	4	13	8	4	12	9	4	13	8	5	6	9'-2"	5	9	8'-8"	5'-7"	3'-1"	5	9'-2"	5	6	9'-8"	5	9	13'-11"	4'-8"	9'-3"	5	9'-8"	0.267	0.345	0.479	1.091	150.24
9-10	8	9	8	10	9	9	4	9	10'-5"	4	6	36	4	12	7	4	14	6	4	12	9	4	14	6	5	6	9'-2"	4	6	5'-10"	2'-11"	2'-11"	4	9'-2"	5	6	9'-8"	4	6	12'-2"	2'-11"	9'-3"	4	9'-8"	0.267	0.345	0.479	1.091	192.87
11-15	8	9	8	10	9	9	4	12	10'-5"	4	6	36	4	12	7	4	15	6	4	12	9	4	14	6	6	6	9'-2"	5	6	6'-2"	3'-1"	3'-1"	5	9'-2"	6	6	9'-8"	5	6	12'-3"	3'-0"	9'-3"	5	9'-8"	0.300	0.380	0.506	1.186	211.29
16-20	8	9	9	11	9.5	9	4	12	10'-7"	4	6	36	4	12	7	4	15	6	4	12	9	4	13	6	8	9	9'-3"	5	6	6'-4"	3'-2"	3'-2"	5	9'-3"	7	6	9'-9"	5	6	12'-3"	2'-11"	9'-4"	5	9'-9"	0.341	0.438	0.587	1.366	230.45
21-25	8	9	10	12.5	11	6	4	6	10'-9"	4	6	36	4	12	7	4	14	6	4	12	9	4	14	6	8	9	9'-6"	6	9	6'-9"	3'-1"	3'-8"	6	9'-6"	7	6	10'-0"	6	9	12'-7"	3'-1"	9'-6"	6	10'-0"	0.395	0.495	0.640	1.530	238.37
26-30	8	9	11.5	14	12	9	6	12	11'-0"	4	6	36	4	12	7	4	13	6	4	12	9	4	14	6	8	9	9'-8"	6	9	6'-11"	3'-1"	3'-10"	6	9'-8"	7	6	10'-2"	6	9	12'-9"	3'-2"	9'-7"	6	10'-2"	0.435	0.537	0.693	1.665	252.58
31-35	8	9	12.5	15	13	9	6	9	11'-2"	4	6	36	4	12	7	4	13	6	4	12	9	4	14	6	8	9	9'-10"	6	9	7'-1"	3'-2"	3'-11"	6	9'-10"	7	6	10'-4"	6	9	13'-0"	3'-4"	9'-8"	6	10'-4"	0.476	0.580	0.746	1.802	260.05
36-40	8	9	13.5	16	14	9	6	9	11'-4"	4	6	36	4	12	7	4	15	6	4	12	9	4	14	6	7	6	10'-0"	5	6	7'-2"	3'-7"	3'-7"	5	10'-0"	7	6	10'-6"	5	6	13'-2"	3'-5"	9'-9"	5	10'-6"	0.518	0.625	0.799	1.942	272.71
41-45	8	9	14.5	17	15	9	4	9	11'-6"	4	6	36	4	12	7	4	14	6	4	12	9	4	15	6	7	6	10'-2"	7	9	7'-10"	3'-5"	4'-5"	7	10'-2"	7	6	10'-8"	7	9	13'-5"	3'-7"	9'-10"	7	10'-8"	0.555	0.664	0.825	2.044	266.63
46-50	8	9	15.5	18	15.5	9	6	9	11'-8"	4	6	36	4	12	7	4	15	6	4	12	9	4	15	6	7	6	10'-3"	5	6	7'-6"	3'-9"	3'-9"	5	10'-3"	7	6	10'-9"	5	6	13'-7"	3'-8"	9'-11"	5	10'-9"	0.583	0.710	0.878	2.171	298.53
51-55	8	9	16	19	16.5	9	5	12	11'-10"	4	6	36	4	12	7	4	16	6	4	12	9	4	15	6	9	9	10'-5"	7	9	8'-7"	4'-0"	4'-7"	7	10'-5"	9	9	10'-11"	7	9	13'-9"	3'-9"	10'-0"	7	10'-11"					



- Notes:**
- Dimensions listed on this sheet to be used in conjunction with Sheet RCB G3-20.
 - The k2 and m2 bars horizontal legs may lap in low fill situations.
 - Fill, dimensions "S" and "H" are in feet.
 - Dimensions "A", "B", "C", "D", and "Sp." listed in the bar list are in inches.
 - Dimensions "L", "H", "V" are in feet and inches.

LATEST REVISION DATE	 APPROVED BY BRIDGE ENGINEER	Standard Design Single Reinforced Concrete Box Culverts July, 2020	
		Culvert Barrel Details 8' x 9' Barrel Sections	RCB 8-9-20
		IOWADOT Highway Division Standard Design Single Reinforced Concrete Box Culverts July, 2020	

ENGLISHLRFDDESIGNEDSINGLECULVERTS.DGN - RCB 8-9-20 - THIS SHEET ISSUED 07-2020.