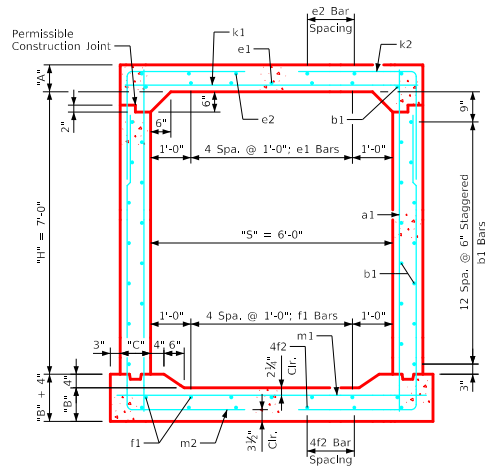
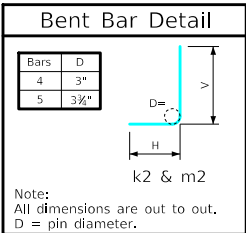


Variable Dimensions and Quantities for 6' x 7' Barrel Sections

Dimensions										Bar List																		Quantities																																				
Fill	S	H	A	B	C	D	a1		b1		e1		e2		f1		f2		k1				k2				k9		m1		m2				m9				Concrete (CY/FT)				Steel (LB/FT)																					
0	1	2	3	4-7	8-10	11-15	16-20	21-25	26-30	31-35	36-40	41-45	46-50	51-55	Size	Sp.	L	Size	Sp.	No.	Size	Sp.	No.	Size	Sp.	No.	Size	Sp.	No.	Size	Sp.	L	Size	Sp.	L	Size	Sp.	L	Size	Sp.	L	Size	Sp.	L	Size	Sp.	L	Size	Sp.	L	Size	Sp.	L	Size	Sp.	L	Size	Sp.	L	Slab	Floor	Walls	Total	
0	6	7	10.5	10	9	9	4	12	8'-7"	4	6	28	5	12	5	4	14	6	4	12	7	4	14	6	6	9	7'-2"	4	6	7'-4"	4'-5"	2'-11"	-	-	6	9	7'-8"	4	6	11'-8"	4'-5"	7'-3"	-	-	0.275	0.284	0.368	0.927	130.55															
1	6	7	9	10	9	9	4	9	8'-6"	4	6	28	5	12	5	4	14	6	4	12	7	4	14	6	6	9	7'-2"	5	12	7'-9"	4'-7"	3'-2"	-	-	6	9	7'-8"	5	12	11'-10"	4'-7"	7'-3"	-	-	0.218	0.284	0.368	0.893	126.68															
2	6	7	8	10	9	9	4	9	8'-5"	4	6	28	5	12	5	4	14	6	4	12	7	4	14	6	6	9	7'-2"	5	12	7'-8"	4'-7"	3'-1"	-	-	6	9	7'-8"	5	12	11'-10"	4'-7"	7'-3"	-	-	0.218	0.284	0.368	0.870	126.34															
3	6	7	8	10	9	9	4	9	8'-5"	4	6	28	4	12	5	4	14	6	4	12	7	4	14	6	4	6	7'-2"	5	12	7'-8"	4'-7"	3'-1"	-	-	4	6	7'-8"	5	12	11'-10"	4'-7"	7'-3"	-	-	0.218	0.284	0.368	0.870	113.50															
4-7	6	7	8	10	9	9	4	9	8'-5"	4	6	28	4	12	5	4	14	6	4	12	7	4	14	6	4	6	7'-2"	5	12	7'-8"	4'-7"	3'-1"	5	7'-2"	4	6	7'-8"	5	12	11'-2"	3'-11"	7'-3"	5	7'-8"	0.218	0.284	0.368	0.870	112.00															
8-10	6	7	8	10	9	9	4	9	8'-5"	4	6	28	4	12	5	4	15	6	4	14	7	4	14	6	4	6	7'-2"	5	12	6'-2"	3'-1"	3'-1"	5	7'-2"	4	6	7'-8"	5	12	10'-2"	2'-11"	7'-3"	5	7'-8"	0.218	0.284	0.368	0.870	107.18															
11-15	6	7	8	10	9	9	4	12	8'-5"	4	6	28	4	12	5	4	13	6	4	12	7	4	11	6	6	9	7'-2"	4	6	5'-6"	2'-9"	2'-9"	4	7'-2"	6	9	7'-8"	4	6	9'-8"	2'-5"	7'-3"	4	7'-8"	0.218	0.284	0.368	0.870	119.11															
16-20	6	7	8	10	9	9	4	9	8'-5"	4	6	28	4	12	5	4	13	6	4	12	7	4	10	6	5	6	7'-2"	4	6	5'-6"	2'-9"	2'-9"	4	7'-2"	5	6	7'-8"	4	6	9'-7"	2'-4"	7'-3"	4	7'-8"	0.218	0.284	0.368	0.870	122.71															
21-25	6	7	8	10.5	9	9	5	12	8'-5"	4	6	28	4	12	5	4	12	6	4	12	7	4	11	6	7	9	7'-2"	4	6	5'-4"	2'-8"	2'-8"	4	7'-2"	6	6	7'-8"	4	6	9'-9"	2'-5"	7'-4"	4	7'-8"	0.218	0.296	0.368	0.882	138.05															
26-30	6	7	8.5	11	9	9	4	12	8'-6"	4	6	28	4	12	5	4	11	6	4	12	7	4	11	6	6	6	7'-2"	5	6	5'-7"	2'-5"	3'-2"	5	7'-2"	6	6	7'-8"	5	6	9'-10"	2'-6"	7'-4"	5	7'-8"	0.229	0.308	0.368	0.905	157.24															
31-35	6	7	9.5	12	10	9	4	12	8'-8"	4	6	28	4	12	5	4	10	6	4	12	7	4	11	6	6	6	7'-2"	5	6	5'-8"	2'-5"	3'-3"	5	7'-4"	6	6	7'-10"	5	6	10'-0"	2'-7"	7'-5"	5	7'-10"	0.260	0.341	0.409	1.010	159.53															
36-40	6	7	10	12.5	11	9	4	12	8'-9"	4	6	28	4	12	5	4	10	6	4	12	7	4	11	6	6	6	7'-6"	5	6	5'-9"	2'-6"	3'-3"	5	7'-6"	6	6	8'-0"	5	6	10'-1"	2'-7"	7'-6"	5	8'-0"	0.279	0.361	0.451	1.091	161.42															
41-45	6	7	11	13.5	11.5	9	4	12	8'-11"	4	6	28	4	12	5	4	10	6	4	12	7	4	11	6	8	9	7'-7"	5	6	5'-11"	2'-7"	3'-4"	5	7'-7"	8	9	8'-1"	5	6	10'-4"	2'-9"	7'-7"	5	8'-1"	0.308	0.391	0.471	1.170	174.58															
46-50	6	7	11.5	14	12.5	9	4	9	9'-0"	4	6	28	4	12	5	4	10	6	4	12	7	4	11	6	8	9	7'-9"	5	6	6'-1"	2'-8"	3'-5"	5	7'-9"	8	9	8'-3"	5	6	10'-5"	2'-10"	7'-7"	5	8'-3"	0.328	0.413	0.512	1.253	180.76															
51-55	6	7	12	14.5	13	9	4	9	9'-1"	4	6	28	4	12	5	4	11	6	4	12	7	4	11	6	8	9	7'-10"	5	6	6'-2"	2'-9"	3'-5"	5	7'-10"	8	9	8'-4"	5	6	10'-6"	2'-10"	7'-8"	5	8'-4"	0.345	0.431	0.532	1.308	182.26															



6' x 7' Barrel Section

- Notes:**
1. Dimensions listed on this sheet to be used in conjunction with Sheet RCB G3-20.
 2. The k2 and m2 bars horizontal legs may lap in low fill situations.
 3. Fill, dimensions "S" and "H" are in feet.
 4. Dimensions "A", "B", "C", "D", and "Sp." listed in the bar list are in inches.
 5. Dimensions "L", "H", "V" are in feet and inches.

LATEST REVISION DATE	APPROVED BY BRIDGE ENGINEER <i>[Signature]</i>		
		Standard Design Single Reinforced Concrete Box Culverts July, 2020	
		Culvert Barrel Details 6' x 7' Barrel Sections	RCB 6-7-20

ENGLISHLRFDDESIGNEDSINGLECULVERTS.DGN - RCB 6-7-20 - THIS SHEET ISSUED 07-2020.