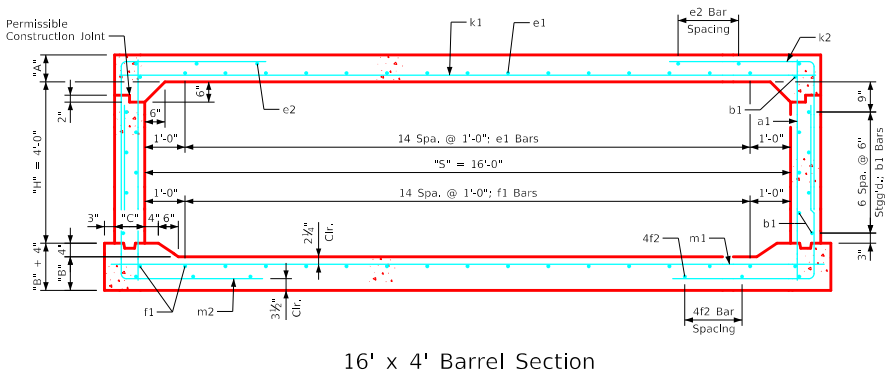
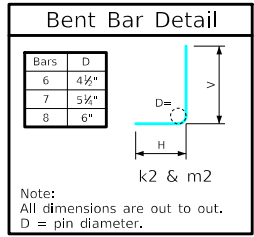


Variable Dimensions and Quantities for 16' x 4' Barrel Sections

Dimensions										Bar List																		Quantities																					
Fill	S	H	A	B	C	D	a1		b1		e1		e2		f1		f2		k1			k2			k9			m1		m2			m9			Concrete (CY/FT)				Steel (LB/FT)									
0	1	2	3-5	6-8	9-10	11-13	14-16	Size	Sp.	Size	Sp.	Size	Sp.	Size	Sp.	Size	Sp.	Size	Sp.	L	Size	Sp.	L	H	V	Size	L	Size	Sp.	L	Size	Sp.	L	H	V	Size	L	Slab	Floor	Walls	Total								
0	16	4	15	14.5	9	9	4	9	6'-4"	4	6	16	5	12	15	4	14	6	4	12	17	4	16	8	6	6	17'-2"	6	9	7'-1"	3'-0"	4'-1"	6	17'-2"	7	9	17'-8"	7	9	9'-4"	4'-8"	4'-8"	7	17'-8"	0.843	0.842	0.202	1.887	246.76
1	16	4	14	14.5	9	9	4	12	6'-3"	4	6	16	5	12	15	4	12	8	4	12	17	4	14	8	6	6	17'-2"	7	9	8'-0"	3'-8"	4'-4"	7	17'-2"	7	9	17'-8"	7	9	8'-10"	4'-2"	4'-8"	7	17'-8"	0.789	0.842	0.202	1.833	258.84
2	16	4	9.5	10.5	9	9	4	12	5'-7"	4	6	16	5	12	15	4	15	8	4	12	17	4	17	8	7	6	17'-2"	7	6	8'-10"	4'-5"	4'-5"	7	17'-2"	7	6	17'-8"	7	6	9'-2"	4'-10"	4'-4"	7	17'-8"	0.546	0.620	0.202	1.368	352.74
3-5	16	4	9	11	9	9	4	12	5'-7"	4	6	16	4	12	15	4	15	8	4	12	17	4	15	8	7	6	17'-2"	7	6	8'-10"	4'-5"	4'-5"	7	17'-2"	7	6	17'-8"	7	6	8'-8"	4'-4"	4'-4"	7	17'-8"	0.519	0.648	0.202	1.369	343.03
6-8	16	4	10	12.5	9	9	4	12	5'-9"	4	6	16	4	12	15	4	15	8	4	12	17	4	13	8	8	6	17'-2"	8	6	8'-10"	4'-5"	4'-5"	8	17'-2"	8	6	17'-8"	7	6	8'-5"	3'-11"	4'-6"	7	17'-8"	0.573	0.731	0.202	1.506	408.32
9-10	16	4	11	13	9.5	9	4	12	5'-11"	4	6	16	4	12	15	4	12	8	4	12	17	4	12	8	8	6	17'-3"	8	6	8'-4"	3'-10"	4'-6"	8	17'-3"	8	6	17'-9"	8	6	8'-4"	3'-10"	4'-6"	8	17'-9"	0.631	0.763	0.213	1.607	425.05
11-13	16	4	13	14.5	10	9	4	12	6'-2"	4	6	16	4	12	15	4	17	6	4	12	17	4	17	6	8	6	17'-4"	7	6	7'-9"	3'-6"	4'-3"	7	17'-4"	8	6	17'-10"	8	6	8'-3"	3'-7"	4'-8"	8	17'-10"	0.744	0.852	0.224	1.820	396.29
14-16	16	4	14.5	16.5	11	9	4	12	6'-6"	4	6	16	4	12	15	4	16	6	4	12	17	4	16	6	8	6	17'-6"	7	6	7'-10"	3'-5"	4'-5"	7	17'-6"	9	6	18'-0"	7	6	8'-3"	3'-5"	4'-10"	7	18'-0"	0.836	0.973	0.247	2.056	404.42



- Notes:**
- Dimensions listed on this sheet to be used in conjunction with Sheet RCB G3-20.
 - The k2 and m2 bars horizontal legs may lap in low fill situations.
 - Fill, dimensions "S" and "H" are in feet.
 - Dimensions "A", "B", "C", "D", and "Sp." listed in the bar list are in inches.
 - Dimensions "L", "H", "V" are in feet and inches.

LATEST REVISION DATE	APPROVED BY BRIDGE ENGINEER	Standard Design Single Reinforced Concrete Box Culverts July, 2020
Culvert Barrel Details 16' x 4' Barrel Sections		RCB 16-4-20

ENGLISHLRFDDESIGNEDSINGLECULVERTS.DGN - RCB 16-4-20 - THIS SHEET ISSUED 07-2020.