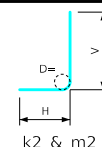


Variable Dimensions and Quantities for 16' x 11' Barrel Sections

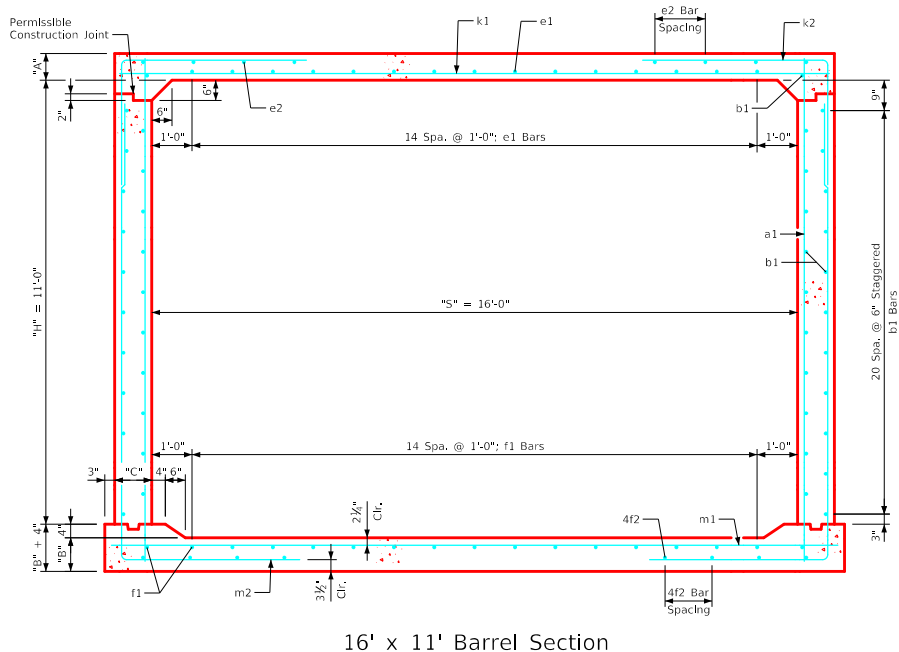
Dimensions										Bar List																		Quantities																					
Fill	S	H	A	B	C	D	a1		b1			e1			e2			f1			f2			k1			k2			k9			m1		m2			m9			Concrete (CY/FT)				Steel (LB/FT)				
0	1	2	3-5	6-8	9-10	11-13	14-16	Size	Sp.	L	Size	Sp.	No.	Size	Sp.	No.	Size	Sp.	No.	Size	Sp.	No.	Size	Sp.	L	Size	Sp.	L	Size	Sp.	L	Size	Sp.	L	Size	Sp.	L	Slab	Floor	Walls	Total								
0	16	11	14.5	15	11	9	6	9	13'-4"	4	6	44	5	12	15	4	16	12	4	12	17	4	15	10	8	9	17'-6"	5	6	11'-2"	7'-6"	3'-8"	5	17'-6"	8	9	18'-0"	5	6	17'-6"	5'-10"	11'-8"	5	18'-0"	0.836	0.888	0.723	2.447	379.58
1	16	11	14	15	11	9	6	9	13'-4"	4	6	44	5	12	15	4	16	12	4	12	17	4	15	10	8	9	17'-6"	5	6	11'-3"	7'-8"	3'-7"	5	17'-6"	8	9	18'-0"	5	6	17'-8"	6'-0"	11'-8"	5	18'-0"	0.808	0.888	0.723	2.419	380.63
2	16	11	10	11.5	11	6	4	6	12'-8"	4	6	44	6	12	15	4	14	10	4	12	17	4	13	10	9	9	17'-6"	7	9	9'-7"	5'-7"	4'-0"	7	17'-6"	7	6	18'-0"	8	9	16'-9"	5'-4"	11'-5"	8	18'-0"	0.588	0.690	0.723	2.001	451.21
3-5	16	11	9.5	12.5	11	6	4	6	12'-9"	4	6	44	4	12	15	4	17	8	4	12	17	4	17	8	9	9	17'-6"	8	9	9'-5"	5'-1"	4'-4"	8	17'-6"	7	6	18'-0"	7	9	16'-6"	5'-0"	11'-6"	7	18'-0"	0.560	0.746	0.723	2.029	421.13
6-8	16	11	10	12.5	11	9	4	12	12'-9"	4	6	44	4	12	15	4	15	8	4	12	17	4	15	8	8	6	17'-6"	7	6	8'-7"	4'-7"	4'-0"	7	17'-6"	8	6	18'-0"	7	6	16'-1"	4'-7"	11'-6"	7	18'-0"	0.588	0.746	0.723	2.057	478.63
9-10	16	11	11	14.5	11	9	5	12	13'-0"	4	6	44	4	12	15	4	14	8	4	12	17	4	13	8	8	6	17'-6"	7	6	8'-8"	4'-4"	4'-4"	7	17'-6"	9	6	18'-0"	6	6	15'-10"	4'-2"	11'-8"	6	18'-0"	0.643	0.860	0.723	2.226	478.89
11-13	16	11	13	16	11	9	4	12	13'-4"	4	6	44	4	12	15	4	13	8	4	12	17	4	12	8	9	6	17'-6"	8	9	8'-8"	4'-0"	4'-8"	8	17'-6"	9	6	18'-0"	8	9	15'-8"	3'-11"	11'-9"	8	18'-0"	0.753	0.945	0.723	2.421	509.97
14-16	16	11	14.5	17.5	12	9	6	12	13'-7"	4	6	44	4	12	15	4	12	8	4	12	17	4	12	8	9	6	17'-8"	7	6	8'-4"	3'-11"	4'-5"	7	17'-8"	9	6	18'-2"	6	6	15'-11"	4'-0"	11'-11"	6	18'-2"	0.846	1.040	0.788	2.674	518.89

Bent Bar Detail

Bars	D
5	3 1/2"
6	4 1/2"
7	5 1/2"
8	6"



Note:
All dimensions are out to out.
D = pin diameter.



Notes:

- Dimensions listed on this sheet to be used in conjunction with Sheet RCB G3-20.
- The k2 and m2 bars horizontal legs may lap in low fill situations.
- Fill, dimensions "S" and "H" are in feet.
- Dimensions "A", "B", "C", "D", and "Sp." listed in the bar list are in inches.
- Dimensions "L", "H", "V" are in feet and inches.

LATEST REVISION DATE	 APPROVED BY BRIDGE ENGINEER	 Standard Design Single Reinforced Concrete Box Culverts July, 2020
Culvert Barrel Details		RCB 16-11-20
16' x 11' Barrel Sections		