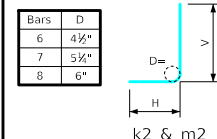


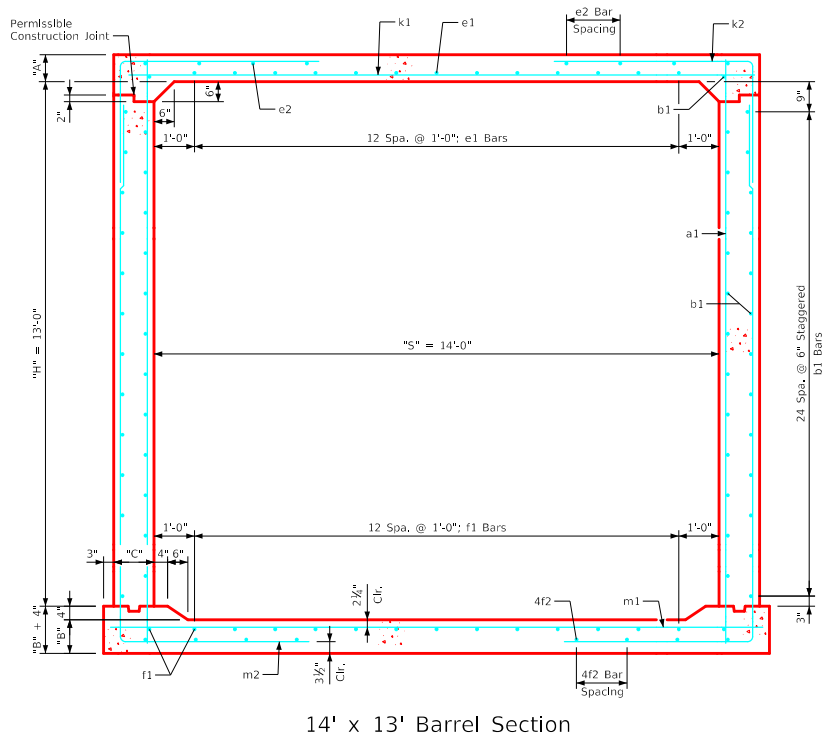
### Variable Dimensions and Quantities for 14' x 13' Barrel Sections

Dimensions										Bar List																		Quantities																					
Fill	S	H	A	B	C	D	a1		b1			e1			e2			f1		f2			k1				k2				k9				m1		m2				m9				Concrete (CY/FT)				Steel (LB/FT)
0	1	2	3-5	6-8	9-10	11-13	14-16	Size	Sp.	L	Size	Sp.	No.	Size	Sp.	No.	Size	Sp.	No.	Size	Sp.	No.	Size	Sp.	L	Size	Sp.	L	Size	Sp.	L	Size	Sp.	L	Size	Sp.	L	Size	Sp.	L	Size	Sp.	L	Slab	Floor	Walls	Total		
0	14	13	14	15	13	9	4	9	15'-4"	4	6	52	5	12	13	4	15	12	4	12	15	4	15	12	7	9	15'-10"	8	12	14'-3"	9'-6"	4'-9"	-	-	6	6	16'-4"	8	12	21'-7"	7'-11"	13'-8"	-	-	0.741	0.815	1.014	2.570	402.47
1	14	13	13.5	14.5	13	9	6	9	15'-3"	4	6	52	5	12	13	4	15	12	4	12	15	4	15	12	7	9	15'-10"	6	9	13'-1"	9'-2"	3'-11"	-	-	7	9	16'-4"	6	9	21'-8"	8'-0"	13'-8"	-	-	0.716	0.789	1.014	2.519	372.45
2	14	13	9	11	13	9	4	9	14'-7"	4	6	52	6	12	13	4	17	10	4	12	15	4	14	10	7	6	15'-10"	8	9	11'-0"	6'-8"	4'-4"	8	15'-10"	7	6	16'-4"	8	9	19'-0"	5'-8"	13'-4"	8	16'-4"	0.492	0.609	1.014	2.115	464.29
3-5	14	13	8.5	10.5	13	9	4	12	14'-6"	4	6	52	4	12	13	4	14	10	4	12	15	4	17	8	7	6	15'-10"	7	6	9'-6"	5'-7"	3'-11"	7	15'-10"	7	6	16'-4"	7	6	18'-6"	5'-2"	13'-4"	7	16'-4"	0.467	0.583	1.014	2.064	453.39
6-8	14	13	9	12.5	13	9	4	9	14'-8"	4	6	52	4	12	13	4	16	8	4	12	15	4	16	8	7	6	15'-10"	7	6	8'-10"	4'-11"	3'-11"	7	15'-10"	7	6	16'-4"	6	6	18'-6"	5'-0"	13'-6"	6	16'-4"	0.492	0.686	1.014	2.192	411.84
9-10	14	13	10	12.5	13	9	4	12	14'-9"	4	6	52	4	12	13	4	15	8	4	12	15	4	15	8	7	6	15'-10"	7	6	8'-8"	4'-8"	4'-0"	7	15'-10"	8	6	16'-4"	7	6	18'-2"	4'-8"	13'-6"	7	16'-4"	0.542	0.686	1.014	2.242	463.45
11-13	14	13	11.5	14	13	9	4	12	15'-0"	4	6	52	4	12	13	4	15	8	4	12	15	4	15	8	8	6	15'-10"	8	9	9'-4"	4'-8"	4'-8"	8	15'-10"	8	6	16'-4"	8	9	18'-3"	4'-8"	13'-7"	8	16'-4"	0.617	0.763	1.014	2.394	468.11
14-16	14	13	12.5	15	13	9	6	12	15'-2"	4	6	52	4	12	13	4	13	8	4	12	15	4	14	8	8	6	15'-10"	6	6	8'-8"	4'-4"	4'-4"	6	15'-10"	8	6	16'-4"	6	6	18'-1"	4'-5"	13'-8"	6	16'-4"	0.666	0.815	1.014	2.495	449.71

#### Bent Bar Detail



Note:  
All dimensions are out to out.  
D = pin diameter.



#### Notes:

- Dimensions listed on this sheet to be used in conjunction with Sheet RCB G3-20.
- The k2 and m2 bars horizontal legs may lap in low fill situations.
- Fill, dimensions "S" and "H" are in feet.
- Dimensions "A", "B", "C", "D", and "Sp." listed in the bar list are in inches.
- Dimensions "L", "H", "V" are in feet and inches.

LATEST REVISION DATE	 APPROVED BY BRIDGE ENGINEER	 Standard Design <b>Single Reinforced Concrete Box Culverts</b> July, 2020	RCB 14-13-20
		Culvert Barrel Details 14' x 13' Barrel Sections	