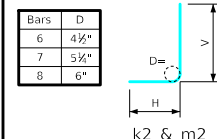


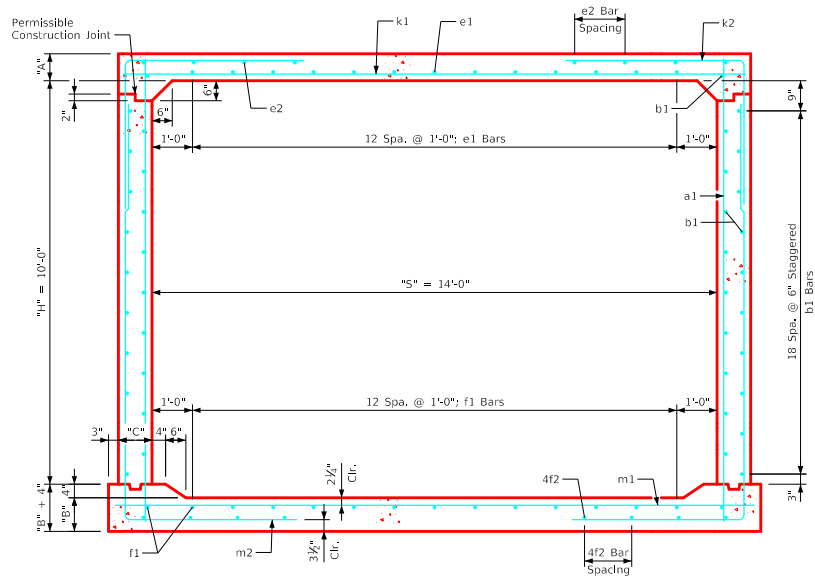
### Variable Dimensions and Quantities for 14' x 10' Barrel Sections

Dimensions										Bar List																		Quantities																					
Fill	S	H	A	B	C	D	a1		b1		e1		e2		f1		f2		k1		k2		k9		m1		m2		m9		Concrete (CY/FT)				Steel (LB/FT)														
0	1	2	3-5	6-8	9-10	11-13	14-16	Size	Sp.	Size	Sp.	Size	Sp.	Size	Sp.	Size	Sp.	Size	Sp.	Size	Sp.	L	H	V	Size	Sp.	Size	Sp.	L	H	V	Size	Sp.	Slab	Floor	Walls	Total												
0	14	10	14	14.5	10	9	5	12	12'-3"	4	6	40	5	12	13	4	15	12	4	12	15	4	14	10	6	6	15'-4"	6	9	12'-7"	8'-7"	4'-0"	-	-	6	6	15'-10"	6	9	16'-2"	5'-6"	10'-8"	6	15'-10"	0.712	0.762	0.594	2.068	307.21
1	14	10	13.5	14	10	9	4	12	12'-2"	4	6	40	5	12	13	4	15	12	4	12	15	4	15	10	6	6	15'-4"	7	12	13'-5"	9'-1"	4'-4"	-	-	6	6	15'-10"	8	12	16'-3"	5'-8"	10'-7"	8	15'-10"	0.688	0.737	0.594	2.019	331.00
2	14	10	9	10.5	10	9	4	12	11'-6"	4	6	40	6	12	13	4	17	8	4	12	15	4	16	8	7	6	15'-4"	6	6	8'-8"	5'-1"	3'-7"	6	15'-4"	7	6	15'-10"	6	6	15'-2"	4'-10"	10'-4"	6	15'-10"	0.470	0.563	0.594	1.627	358.71
3-5	14	10	8.5	11	10	9	4	12	11'-6"	4	6	40	4	12	13	4	15	8	4	12	15	4	15	8	7	6	15'-4"	6	6	8'-2"	4'-7"	3'-7"	6	15'-4"	7	6	15'-10"	6	6	14'-10"	4'-6"	10'-4"	6	15'-10"	0.446	0.588	0.594	1.628	342.89
6-8	14	10	9.5	12.5	10	9	4	12	11'-9"	4	6	40	4	12	13	4	13	8	4	12	15	4	13	8	9	9	15'-4"	6	6	7'-8"	4'-1"	3'-7"	6	15'-4"	8	6	15'-10"	6	6	14'-6"	4'-0"	10'-6"	6	15'-10"	0.494	0.662	0.594	1.750	367.45
9-10	14	10	10	12.5	10	9	4	12	11'-9"	4	6	40	4	12	13	4	12	8	4	12	15	4	12	8	8	6	15'-4"	6	6	7'-8"	3'-10"	3'-10"	6	15'-4"	8	6	15'-10"	6	6	14'-3"	3'-9"	10'-6"	6	15'-10"	0.519	0.662	0.594	1.775	376.16
11-13	14	10	11.5	14.5	10	9	4	12	12'-1"	4	6	40	4	12	13	4	12	8	4	12	15	4	17	6	8	6	15'-4"	6	6	7'-6"	3'-9"	3'-9"	6	15'-4"	8	6	15'-10"	6	6	14'-2"	3'-6"	10'-8"	6	15'-10"	0.591	0.762	0.594	1.947	373.82
14-16	14	10	12.5	15	10	9	4	12	12'-2"	4	6	40	4	12	13	4	16	6	4	12	15	4	16	6	8	6	15'-4"	6	6	7'-4"	3'-5"	3'-11"	6	15'-4"	9	6	15'-10"	6	6	14'-1"	3'-5"	10'-8"	6	15'-10"	0.639	0.787	0.594	2.020	394.50

#### Bent Bar Detail



Note:  
All dimensions are out to out.  
D = pin diameter.



14' x 10' Barrel Section

#### Notes:

- Dimensions listed on this sheet to be used in conjunction with Sheet RCB G3-20.
- The k2 and m2 bars horizontal legs may lap in low fill situations.
- Fill, dimensions "S" and "H" are in feet.
- Dimensions "A", "B", "C", "D", and "Sp." listed in the bar list are in inches.
- Dimensions "L", "H", "V" are in feet and inches.

LATEST REVISION DATE	 APPROVED BY BRIDGE ENGINEER	 Standard Design <b>Single Reinforced Concrete Box Culverts</b> July, 2020
		Culvert Barrel Details 14' x 10' Barrel Sections
		RCB 14-10-20