

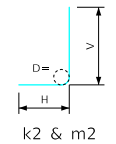
ENGLISH_LRFD_SIGNED_PEDESTRIAN_TUNNEL_STANDARDS.DGN - PT-RCB 12-11-20 - THIS SHEET ISSUED 08-2020

Variable Dimensions and Quantities for 12'-0" x 11'-4" Barrel Sections

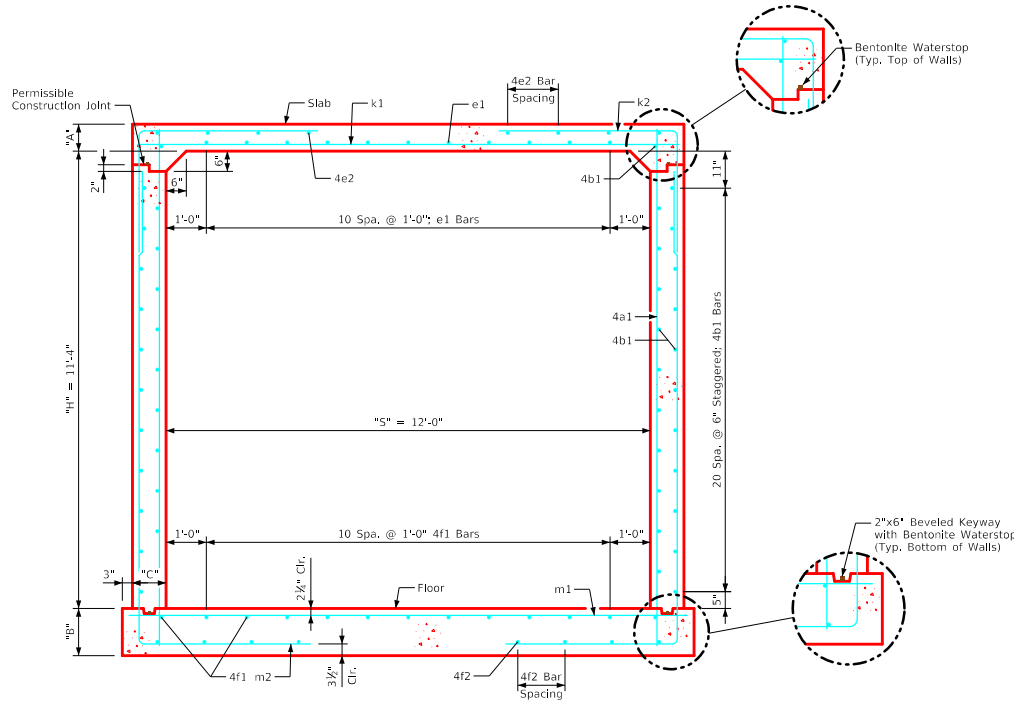
Fill	Dimensions										Bar List																		Quantities																				
	S	H	A	B	C	D	a1			b1			e1			e2			f1			f2			k1			k2			k9			m1		m2		m9		Concrete (CY/FT)				Steel (LB/FT)					
	Size	Sp.	L	Size	Sp.	No.	Size	Sp.	No.	Size	Sp.	No.	Size	Sp.	No.	Size	Sp.	No.	Size	Sp.	No.	Size	Sp.	L	Size	Sp.	L	H	V	Size	L	Size	Sp.	L	Size	Sp.	L	H	V	Size	L	Slab	Floor	Walls	Total	(LB/FT)			
0	12'-0"	11'-4"	13.5	14.5	11	9	4	12	13'-2"	4	6	44	5	12	11	4	16	10	4	12	13	4	16	10	8	12	13'-6"	6	9	12'-0"	8'-0"	4'-0"	--	--	7	9	14'-0"	6	9	19'-7"	8'-0"	11'-7"	--	--	0.614	0.637	0.745	1.996	291.58
1	12'-0"	11'-4"	12.5	14	11	9	4	9	13'-1"	4	6	44	5	12	11	4	16	10	4	12	13	4	16	10	7	9	13'-6"	6	9	11'-11"	8'-0"	3'-11"	--	--	7	9	14'-0"	6	9	19'-7"	8'-0"	11'-7"	--	--	0.571	0.615	0.745	1.931	296.18
2	12'-0"	11'-4"	8.5	10.5	11	9	4	12	12'-5"	4	6	44	5	12	11	4	16	10	4	12	13	4	17	8	9	13'-6"	7	9	10'-2"	6'-2"	4'-0"	7	13'-6"	7	6	14'-0"	7	9	16'-4"	5'-1"	11'-3"	7	14'-0"	0.400	0.460	0.745	1.605	340.34	
3	12'-0"	11'-4"	8	10.5	11	9	4	12	12'-5"	4	6	44	4	12	11	4	17	8	4	12	13	4	16	8	8	9	13'-6"	7	9	8'-11"	5'-0"	3'-11"	7	13'-6"	6	6	14'-0"	7	9	16'-0"	4'-9"	11'-3"	7	14'-0"	0.379	0.460	0.745	1.584	310.53
4-6	12'-0"	11'-4"	8	10.5	11	9	4	12	12'-5"	4	6	44	4	12	11	4	15	8	4	12	13	4	14	8	8	9	13'-6"	6	6	8'-11"	4'-6"	3'-7"	6	13'-6"	7	6	14'-0"	6	6	15'-8"	4'-5"	11'-3"	6	14'-0"	0.379	0.460	0.745	1.584	327.63
7-9	12'-0"	11'-4"	8.5	11	11	9	4	12	12'-6"	4	6	44	4	12	11	4	13	8	4	12	13	4	13	8	7	6	13'-6"	6	6	7'-8"	4'-1"	3'-7"	6	13'-6"	7	6	14'-0"	6	6	15'-5"	4'-1"	11'-4"	6	14'-0"	0.400	0.483	0.745	1.628	329.32
10-12	12'-0"	11'-4"	9.5	12.5	11	9	4	12	12'-8"	4	6	44	4	12	11	4	12	8	4	12	13	4	12	8	7	6	13'-6"	6	6	7'-8"	3'-10"	3'-10"	6	13'-6"	8	6	14'-0"	6	6	15'-3"	3'-10"	11'-5"	6	14'-0"	0.443	0.549	0.745	1.737	346.29
13-15	12'-0"	11'-4"	10.5	13	11	9	4	9	12'-10"	4	6	44	4	12	11	4	13	8	4	12	13	4	17	6	7	6	13'-6"	7	9	8'-2"	4'-1"	4'-1"	7	13'-6"	8	6	14'-0"	7	9	15'-2"	3'-8"	11'-6"	7	14'-0"	0.486	0.571	0.745	1.802	344.92

Bent Bar Details

Bars	D
6	4 1/2"
7	5 1/2"



Note:
All dimensions are out to out.
D = pin diameter.



12'-0" x 11'-4" Barrel Section

Notes:

- Dimensions listed on this sheet to be used in conjunction with Sheet PT G2-20.
- Horizontal legs for the k2 and m2 bars may lap in low fill situations.
- Dimensions "A", "B", "C", "D", and "Sp." listed in the bar list are in inches.
- Dimensions "S", "H", "L", and "V" listed in the bar list are in feet and inches.

LATEST REVISION DATE	APPROVED BY BRIDGE ENGINEER		
		Cast-in-Place Standard Design - Walkways and Trails Reinforced Concrete Pedestrian Tunnel August, 2020	
		Tunnel Details 12'-0" x 11'-4"	PT-RCB 12-11-20