

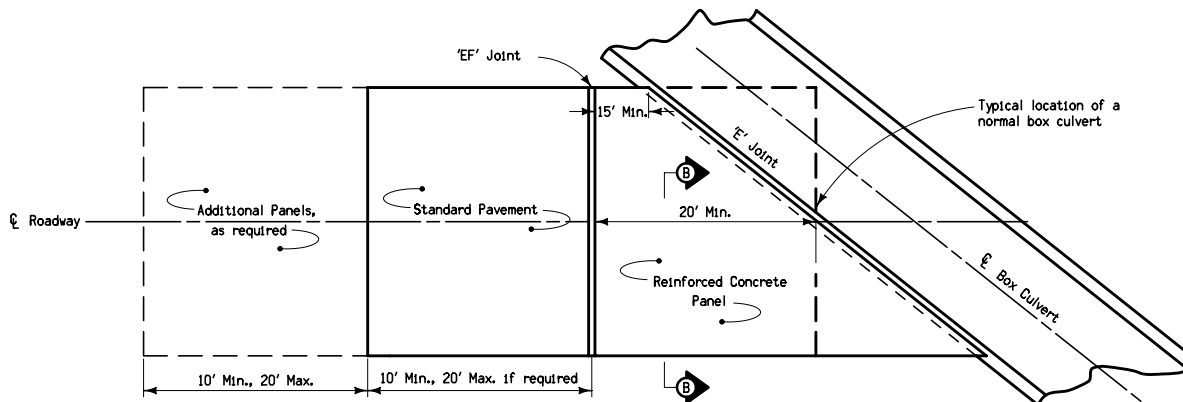
SECTION - TYPICAL INSTALLATION

Price bid for standard pavement of the specified thickness shall be considered full compensation for constructing the pavement as detailed, including all necessary reinforcement and expansion joints as required on this sheet.

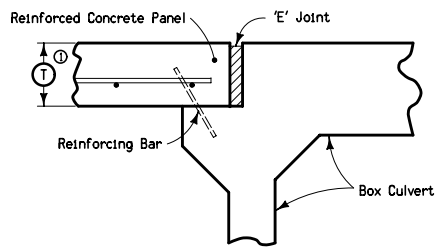
Quantity for 20 feet long by 24 feet wide Reinforced Concrete Panel is 53.3 square yards.

See PV-1 for joint details.

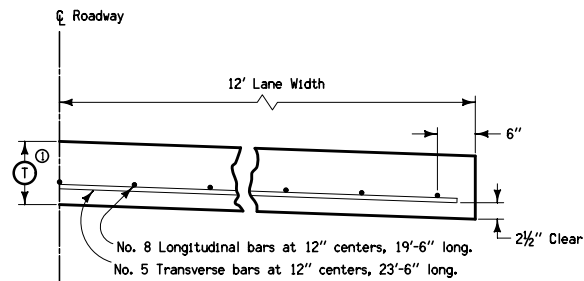
① Refer to plans for pavement thickness ①.



PLAN - TYPICAL INSTALLATION



DETAIL 'A'



SECTION B-B  
Half Section

 Iowa Department of Transportation	REVISION	
	2	04-20-10
<b>STANDARD ROAD PLAN</b>	<b>RR-24</b>	
	SHEET 1 of 1	
<small>REVISIONS: Updated references to renamed standards. Modified reinforcement and pavement minimum.</small>		
<i>Deanna Maifeld</i> <small>APPROVED BY DESIGN METHODS ENGINEER</small>		
<b>REINFORCED CONCRETE PANEL AT BOX CULVERTS</b>		