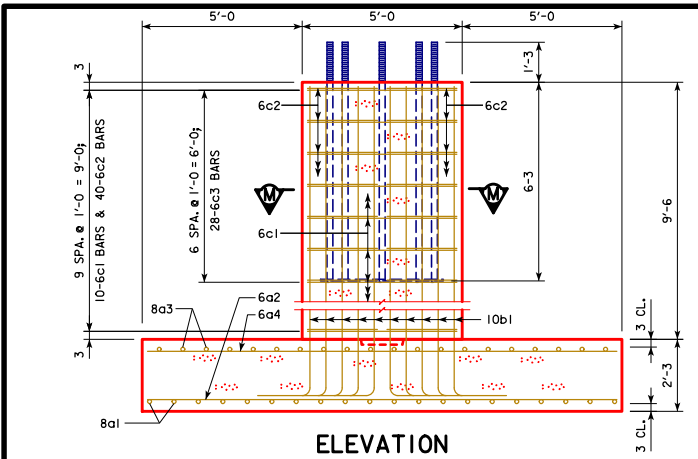
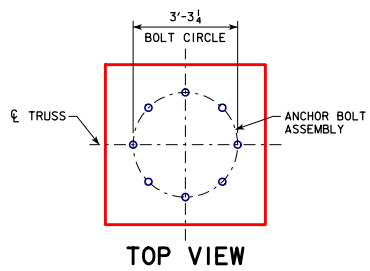


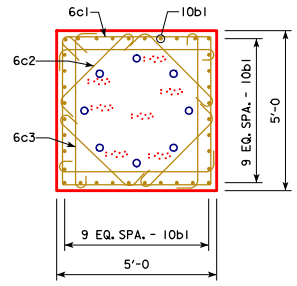
\*REVISED 03-2018: UPDATED BRIDGE ENGINEER SIGNATURE.  
 \*REVISED 03-2019: ADDED TWO SPECIAL BID ITEMS ("ANCHOR BOLT ASSEMBLY—FURNISH" AND "ANCHOR BOLT ASSEMBLY—INSTALL AND SURVEY") TO CLARIFY CONTRACTOR RESPONSIBILITY TO ACCURATELY INSTALL ANCHOR BOLT ASSEMBLY. REORDERED NOTES TO IMPROVE READABILITY.  
 \*STEELCANTILEVERSTRUSS.sgn - SCST-08-17 - THIS SHEET ISSUED 07-2017.



**ELEVATION**

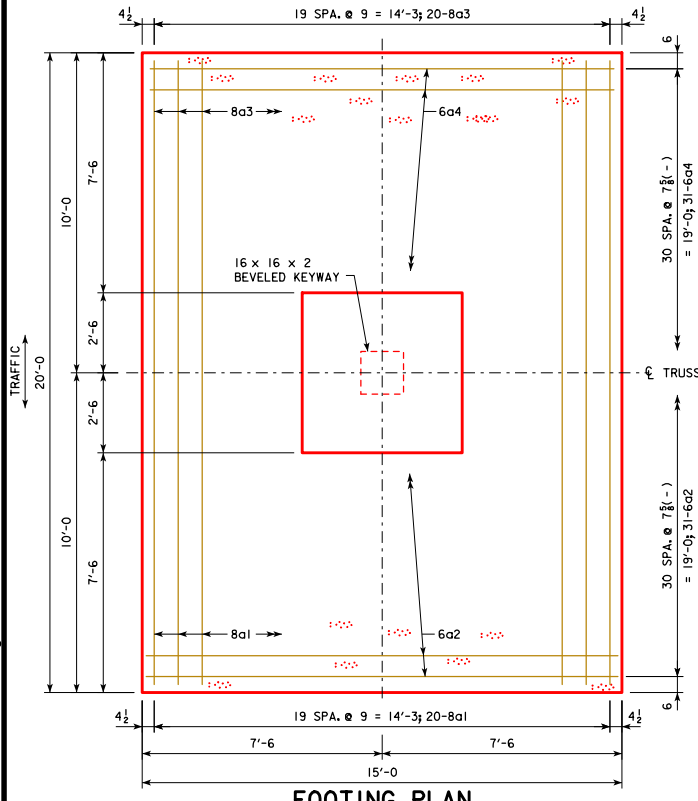


**TOP VIEW**



**SECTION M-M**

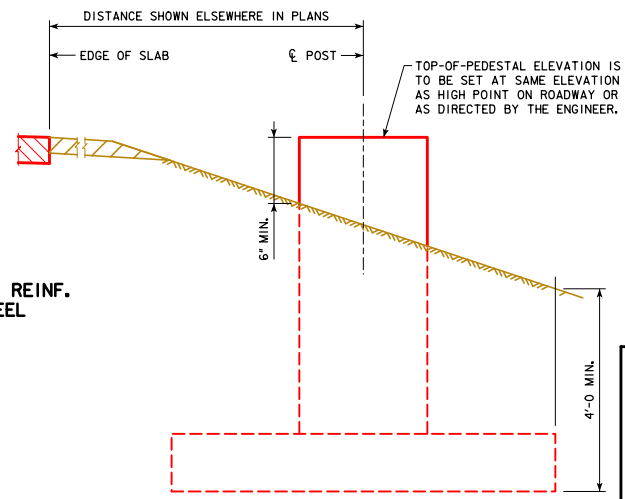
4-6c3 BARS ARE TO BE PLACED WITH EVERY LAYER OF 6c1 BARS IN THE TOP 6'-3 OF THE PEDESTAL.



**FOOTING PLAN**

**TOP REINF. STEEL**

**BOTTOM REINF. STEEL**



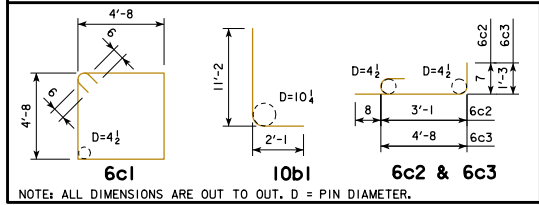
**ELEVATION - TOP OF PEDESTAL AND BACKFILL**

CONCRETE PLACEMENT QUANTITIES	
PEDESTAL	8.8
FOOTING	25.0
<b>TOTAL - C.Y.</b>	<b>33.8</b>

**EPOXY COATED REINFORCING BAR LIST**

BAR	LOCATION	SHAPE	NO.	LENGTH	WEIGHT
8a1	FOOTING BOTTL., LONGIT.	—	20	19'-8	1050
6a2	FOOTING BOTTL., TRANSV.	—	31	14'-8	683
8a3	FOOTING TOP, LONGIT.	—	20	19'-8	1050
6a4	FOOTING TOP, TRANSV.	—	31	14'-8	683
10b1	FOOTING TO PEDESTAL DOWEL	—	36	13'-3	2053
6c1	PEDESTAL TIES	—	10	19'-8	295
6c2	PEDESTAL TIES	—	40	4'-4	260
6c3	PEDESTAL TIES	—	28	6'-7	277
EPOXY COATED REINFORCING STEEL - TOTAL (LBS.)					6351

**BENT BAR DETAILS**



NOTE: ALL DIMENSIONS ARE OUT TO OUT. D = PIN DIAMETER.

**GENERAL NOTES:**

- STRUCTURAL CONCRETE, CLASS C, SHALL BE USED FOR THE FOUNDATION.
- ALL EXPOSED CORNERS 90° OR SHARPER SHALL BE FILLETED WITH A 3/4" DRESSED AND BEVELED STRIP.
- EXCAVATION FOR THE FOUNDATION SHALL BE TO NEAT LINES AND CONCRETE SHALL BE PLACED AGAINST THE UNDISTURBED MATERIAL. ALL EXCAVATION FOR THE FOUNDATION SHALL BE DISPOSED IN THE AREA ADJACENT TO THE FOUNDATION AND SHAPED TO NORMAL GROUND CONTOUR, UNLESS OTHERWISE DIRECTED BY THE ENGINEER.
- ONE ANCHOR BOLT ASSEMBLY INCLUDING ANCHOR PLATE, TEMPLATE, NUTS (5 PER BOLT) AND WASHERS (2 PER BOLT) ARE REQUIRED PER FOUNDATION.
- ALL ANCHOR BOLT MATERIALS AND GALVANIZING SHALL BE IN ACCORDANCE WITH THE REQUIREMENTS OF ARTICLE 4187.01, C, 3 OF THE STANDARD SPECIFICATIONS.
- THE FOUNDATION DETAILS SHOWN ARE BASED ON A NET ALLOWABLE SOIL BEARING PRESSURE (FOR SETTLEMENT) OF 1.0 TON/FT<sup>2</sup>.
- PRICE BID FOR CONTRACT ITEMS SHALL INCLUDE ALL LABOR AND MATERIALS NECESSARY TO CONSTRUCT CANTILEVER SIGN TRUSS FOUNDATION AS DETAILED HEREON. THE COST OF FURNISHING AND INSTALLING RODENT GUARD SHALL BE INCLUDED IN THE PRICE BID FOR "STRUCTURAL CONCRETE (MISCELLANEOUS)" AND NO SEPARATE PAYMENT WILL BE MADE. THE COST OF FURNISHING ANCHOR BOLT ASSEMBLY SHALL BE INCLUDED IN THE PRICE BID FOR "ANCHOR BOLT ASSEMBLY—FURNISH". (NOTE THAT THIS IS A SPECIAL BID ITEM) THE COST OF ACCURATELY INSTALLING AND SURVEYING ANCHOR BOLT ASSEMBLY SHALL BE INCLUDED IN THE PRICE BID FOR "ANCHOR BOLT ASSEMBLY—INSTALL AND SURVEY". (NOTE THAT THIS IS A SPECIAL BID ITEM) SEE STRUCTURAL ALIGNMENT/TOLERANCE NOTES ON SHEET SCST-01-17 FOR ANCHOR BOLT ASSEMBLY ALIGNMENT DOCUMENTATION REQUIREMENTS. CONTRACT ITEMS FOR OVERHEAD SIGN TRUSS FOUNDATION CONSTRUCTION ARE:  
 REINFORCING STEEL, EPOXY COATED - POUNDS  
 STRUCTURAL CONCRETE (MISCELLANEOUS) - CUBIC YARDS  
 EXCAVATION - CUBIC YARDS OF CLASS SPECIFIED  
 ANCHOR BOLT ASSEMBLY—FURNISH (SPECIAL BID ITEM) - POUNDS  
 ANCHOR BOLT ASSEMBLY—INSTALL AND SURVEY (SPECIAL BID ITEM) - EACH

03-2019 LATEST REVISION DATE  APPROVED BY BRIDGE ENGINEER	 STANDARD DESIGN	
	<b>STEEL CANTILEVER SIGN TRUSS</b> JULY, 2017	
	<b>FOUNDATION DETAILS - SPREAD FOOTING</b>	<b>SCST-08-17</b>