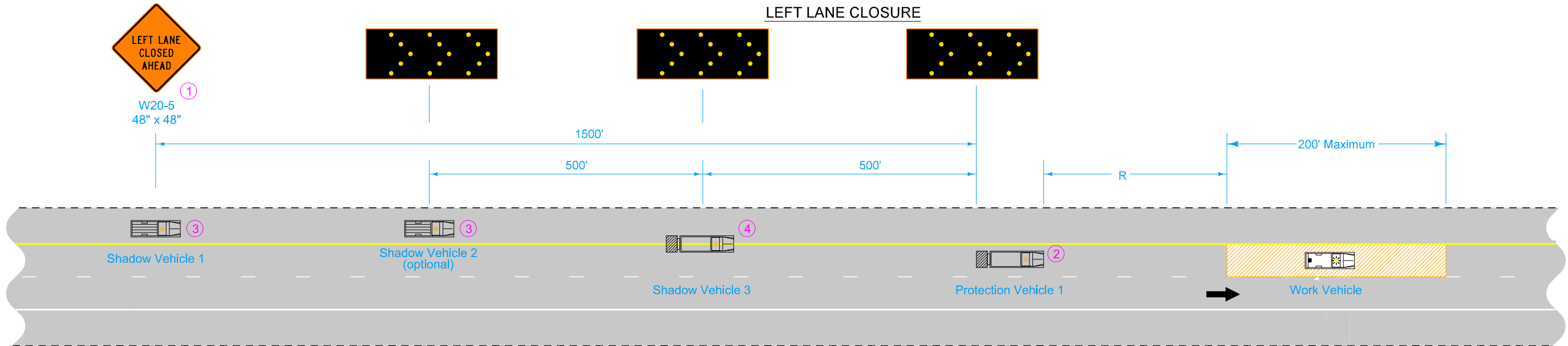
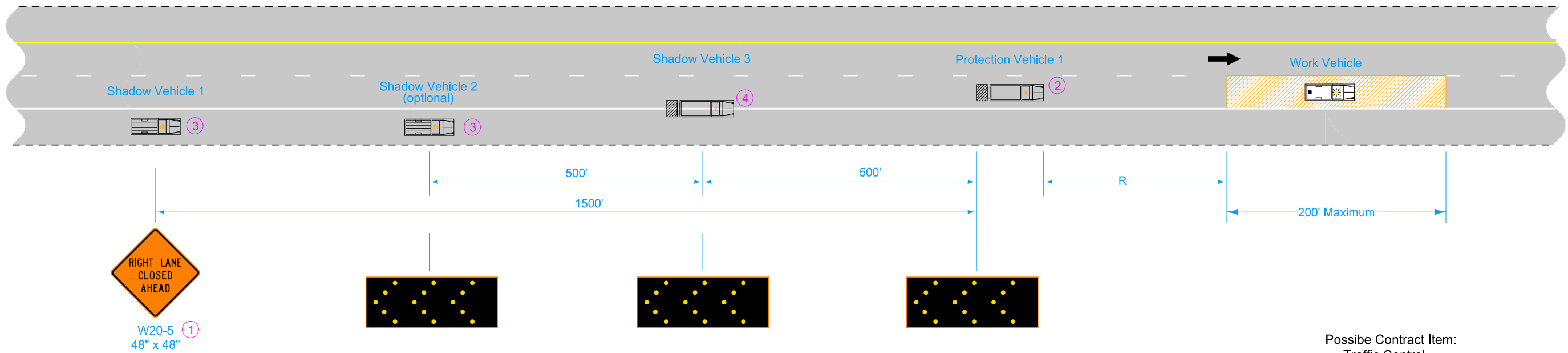


55 MPH OR GREATER

LEFT LANE CLOSURE



RIGHT LANE CLOSURE



Possible Contract Item:  
Traffic Control

Equip all vehicles with an amber revolving light or amber strobe light.

This layout is intended for use with slow-moving operations involving stops not to exceed 30 minutes. For stops exceeding 30 minutes, use TC-418 or TC-419.

- ① Optional Fluorescent yellow green (FYG) sign background may be used.
- ② Audible Warning System recommended.
- ③ Shadow vehicle may encroach into the travel lane when the shoulder is too narrow to drive on.
- ④ Lateral position of Shadow Vehicle 3 may be adjusted to create a taper.

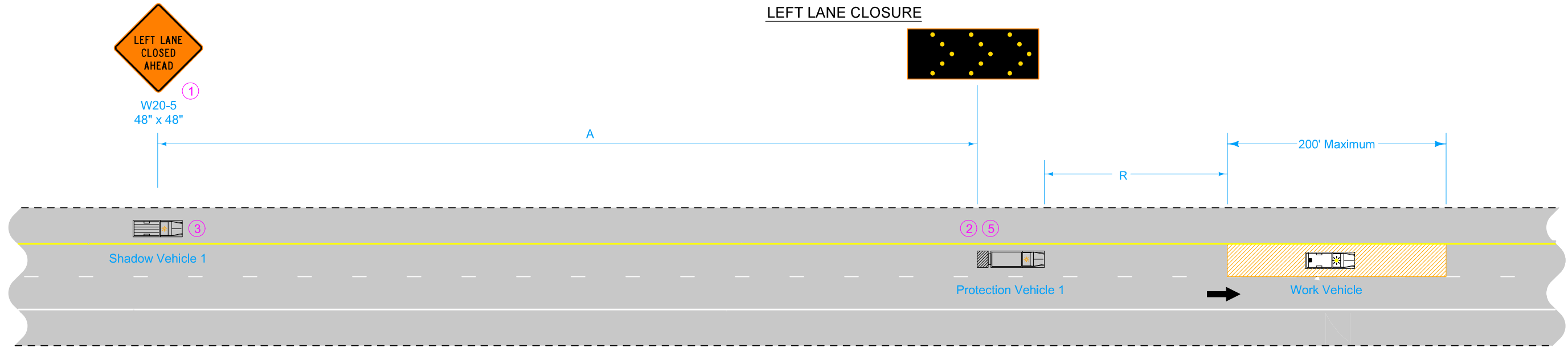
Roll Ahead Distance (R)			
9900 to 22,000 lbs. GVW		Over 22,000 lbs. GVW	
Stationary	Moving 15 mph Max	Stationary	Moving 15 mph Max
200'	240'	160'	200'

**LEGEND**

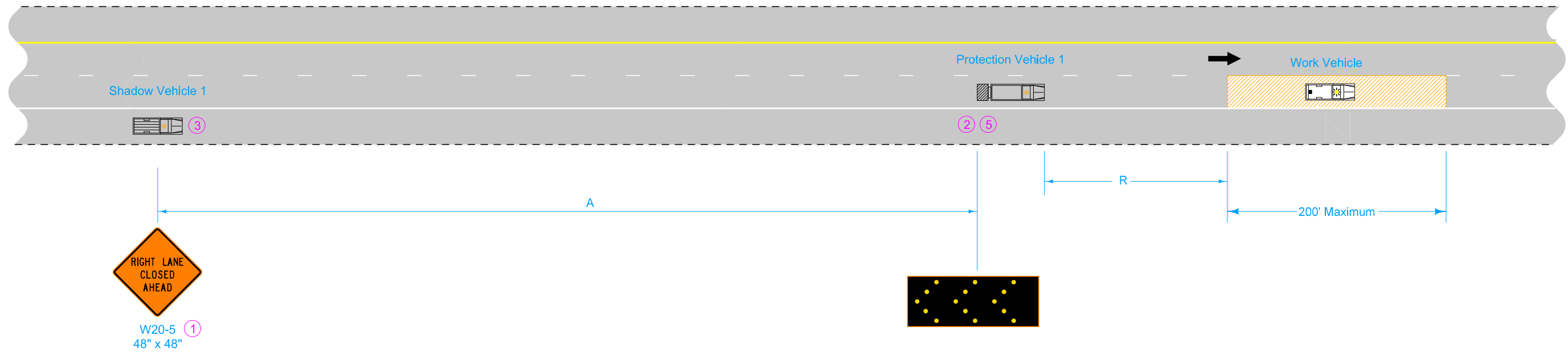
- Arrow Board
- Truck-Mounted Attenuator (TMA)
- Direction of Traffic
- Work Area

	REVISION	
	10	4-16-24
TC-431		
SHEET 1 of 2		
REVISIONS: Adjusted dimensions on sheet 1. Added sheet 2.		
APPROVED BY DESIGN METHODS ENGINEER		
SLOW MOVING VEHICLE OPERATING IN THE TRAFFIC LANE		

50 MPH OR LESS  
LEFT LANE CLOSURE



RIGHT LANE CLOSURE



Equip all vehicles with an amber revolving light or amber strobe light.

This layout is intended for use with slow-moving operations involving stops not to exceed 30 minutes. For stops exceeding 30 minutes, use TC-418 or TC-419.

- ① Optional Fluorescent yellow green (FYG) sign background may be used.
- ② Audible Warning System recommended.
- ③ Shadow vehicle may encroach into the travel lane when the shoulder is too narrow to drive on.
- ⑤ TMA recommended for speed limits of 30 mph or more.

**LEGEND**

- Arrow Board
- Truck-Mounted Attenuator (TMA)
- Direction of Traffic
- Work Area

SPEED LIMIT (mph)*	Vehicle Spacing A	Roll Ahead Distance (R)			
		9900 to 22,000 lbs. GVW		Over 22,000 lbs. GVW	
		Stationary	Moving 15 mph Max	Stationary	Moving 15 mph Max
25-40	500'	100'	100'	75'	100'
45	750'	125'	175'	100'	150'
50	1500'	200'	240'	160'	200'

\* Speed Limit refers to regulatory speed limit before road work.

 <b>STANDARD ROAD PLAN</b>	REVISION	
	10	4-16-24
<h1 style="margin: 0;">TC-431</h1>		
SHEET 2 of 2		
REVISIONS: Adjusted dimensions on sheet 1. Added sheet 2.		
 APPROVED BY DESIGN METHODS ENGINEER		
<b>SLOW MOVING VEHICLE OPERATING IN THE TRAFFIC LANE</b>		