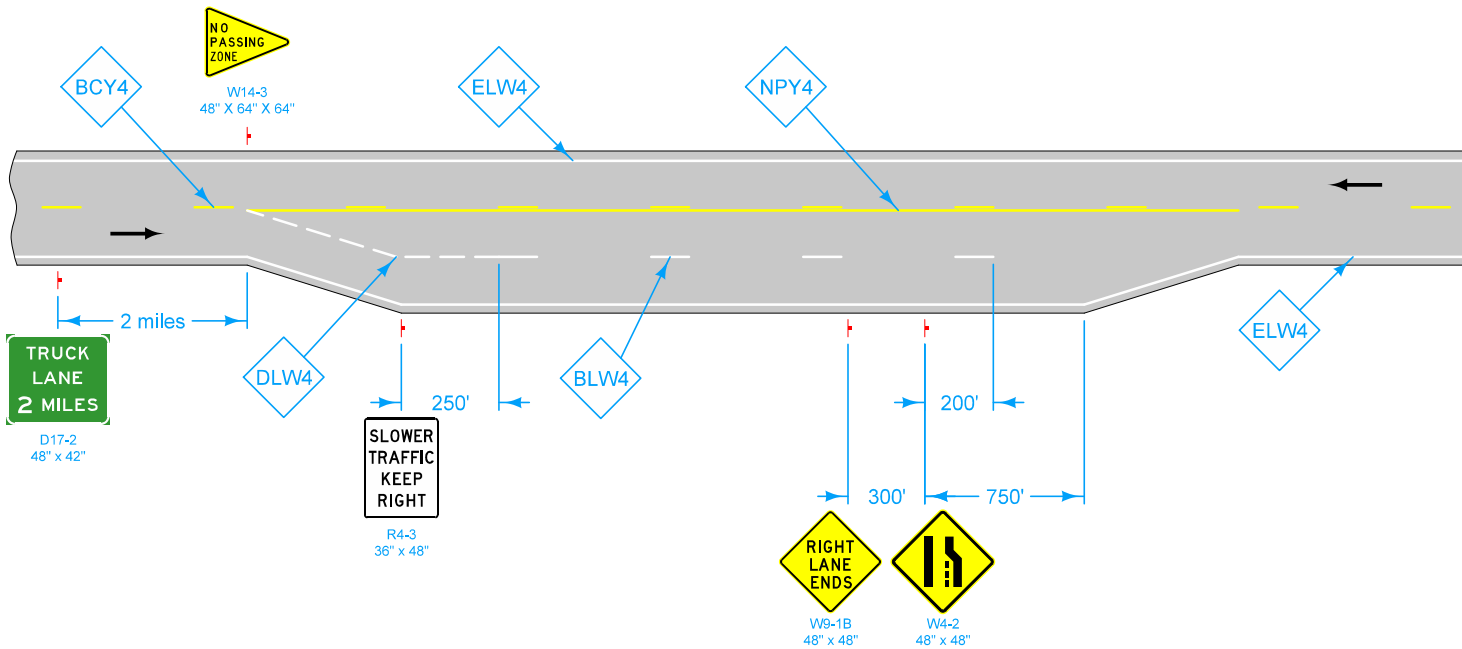


For line information, see [PM-110](#).



**TRUCK  
LANE  
2 MILES**  
D17-2  
48" x 42"

**SLOWER  
TRAFFIC  
KEEP  
RIGHT**  
R4-3  
36" x 48"

**RIGHT  
LANE  
ENDS**  
W9-1B  
48" x 48"

**LANE  
NARROWS**  
W4-2  
48" x 48"

**LEGEND**

- ← Direction of Traffic
- BCY4 Broken Centerline (Yellow)
- BLW4 Broken Lane Line (White)
- ELW4 Edge Line Right (White)
- DLW4 Dotted Line (White)
- NPY4 No Passing Zone Line (Yellow)

Possible Contract Item:  
Pavement Marking Line Items  
Type 'A' Signs

Possible Tabulation:  
[108-22](#)

	REVISION
	1   10-18-16
	<b>PM-220</b>
<b>STANDARD ROAD PLAN</b>	SHEET 1 of 1
REVISIONS: Changed No Passing Zone sign size from 48" x 60" to 48" x 64". Replaced old DOT logo with new DOT logo.	
APPROVED BY DESIGN METHODS ENGINEER	
<b>PASSING LANE</b>	