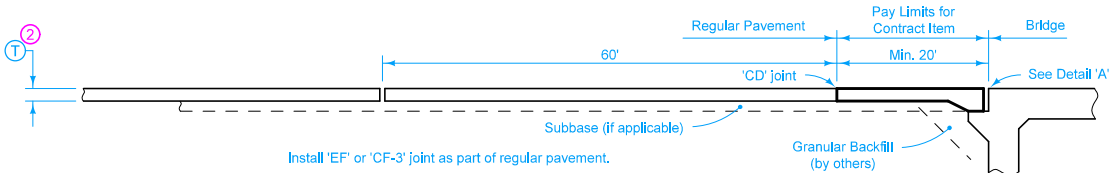
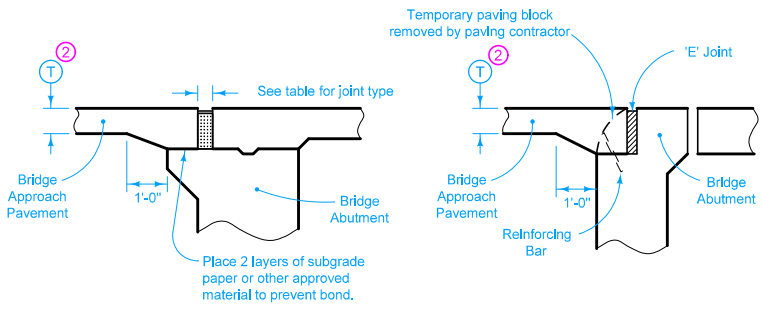


PLAN



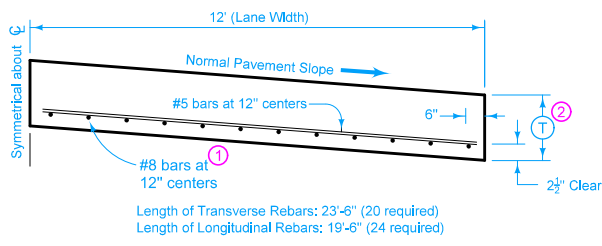
SECTION A-A



MOVABLE ABUTMENT BRIDGE

FIXED ABUTMENT BRIDGE

DETAIL 'A'



TYPICAL HALF SECTION B

Use the same concrete for the bridge approach section as is used for the remainder of the project pavement.

For joint details, see PV-101.

- ① If bridge is skewed, place additional #5 bar parallel to skewed face.
- ② T is the same thickness as is required for the remainder of the project pavement.

Quantity for 20 foot long approach section for 24 foot pavement is 53.33 square yards of "Bridge Approach."

JOINT TYPE FOR MOVABLE ABUTMENT BRIDGES		
Joint	Concrete Beam Maximum Bridge Length	Steel Girder Maximum Bridge Length
CF-1	370'	250'
CF-2	465'	320'
CF-3	575'	400'

Possible Contract Items:
 Bridge Approach, Secondary Roads
 Standard or Slip-Form PCC Pavement

Possible Tabulation:
 112-6

IOWA DOT	REVISION
	New 04-21-15
STANDARD ROAD PLAN	BR-121
SHEET 1 of 1	

REVISIONS: New. Replaces RK-18.
 APPROVED BY DESIGN METHODS ENGINEER
Brian Smith

**BRIDGE APPROACH DETAILS
 (SECONDARY ROADS)**