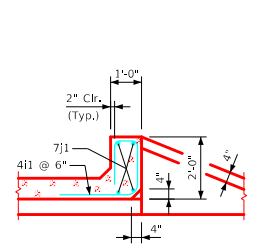
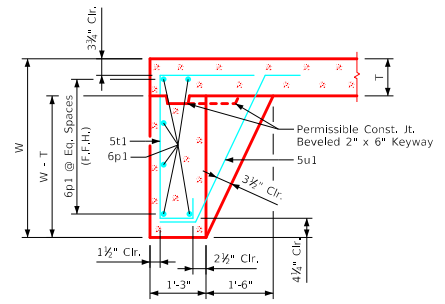


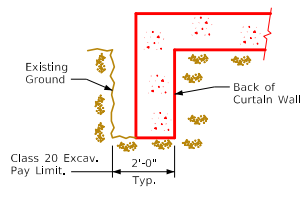
Revised 08-2022: Changed chamfer at top of interior wall to 3/4" x 3/4" (was 4" x 4").
ENGLISHDESIGNEDTWINCULVERTS.DGN - TWPWH 15-2-20 - THIS SHEET ISSUED 07-2020.



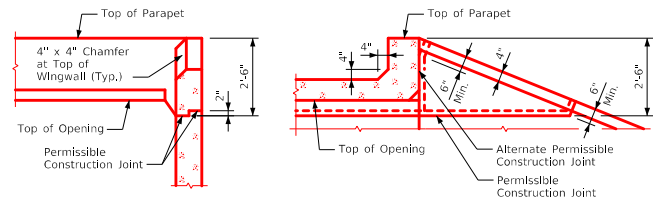
Section thru Parapet



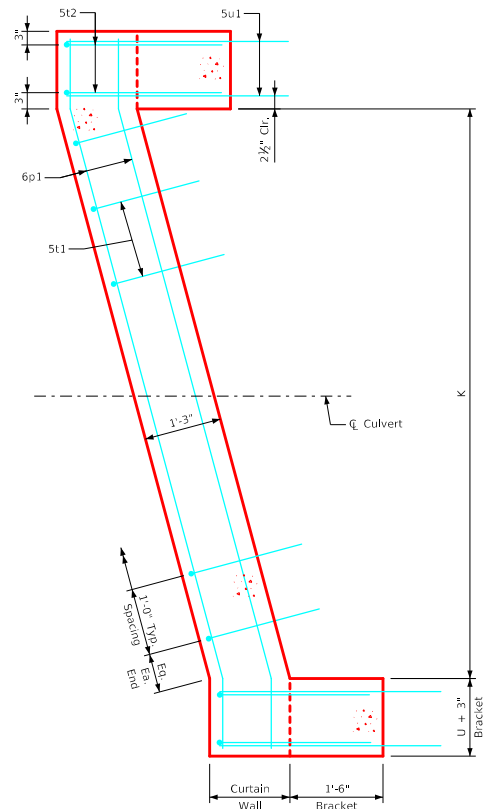
Section thru Curtain Wall



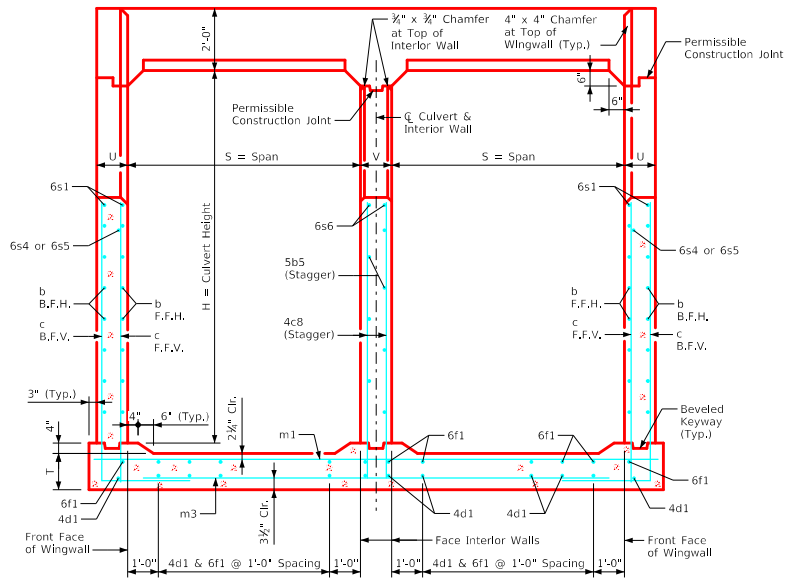
Curtain Wall
Class 20 Excavation



Top of Wingwall Details



Curtain Wall Detail - Plan View
(Apron is not shown)



Typical Cross Section - thru Headwall

- Notes:
- See Sheet TWRCB G2-20 for General Notes, Specifications, and Design Stresses.
 - For dimension table see Sheet TWPWH 15-1-20.

LATEST REVISION DATE AUGUST 2022 APPROVED BY BRIDGE ENGINEER		
	Standard Design - Twin Reinforced Concrete Box Culverts Parallel Wing Headwalls July, 2020	
	<table border="1" style="width: 100%;"> <tr> <td style="width: 50%;"> Cross Section Details 15° Skew </td> <td style="width: 50%;"> TWPWH 15-2-20 </td> </tr> </table>	Cross Section Details 15° Skew
Cross Section Details 15° Skew	TWPWH 15-2-20	