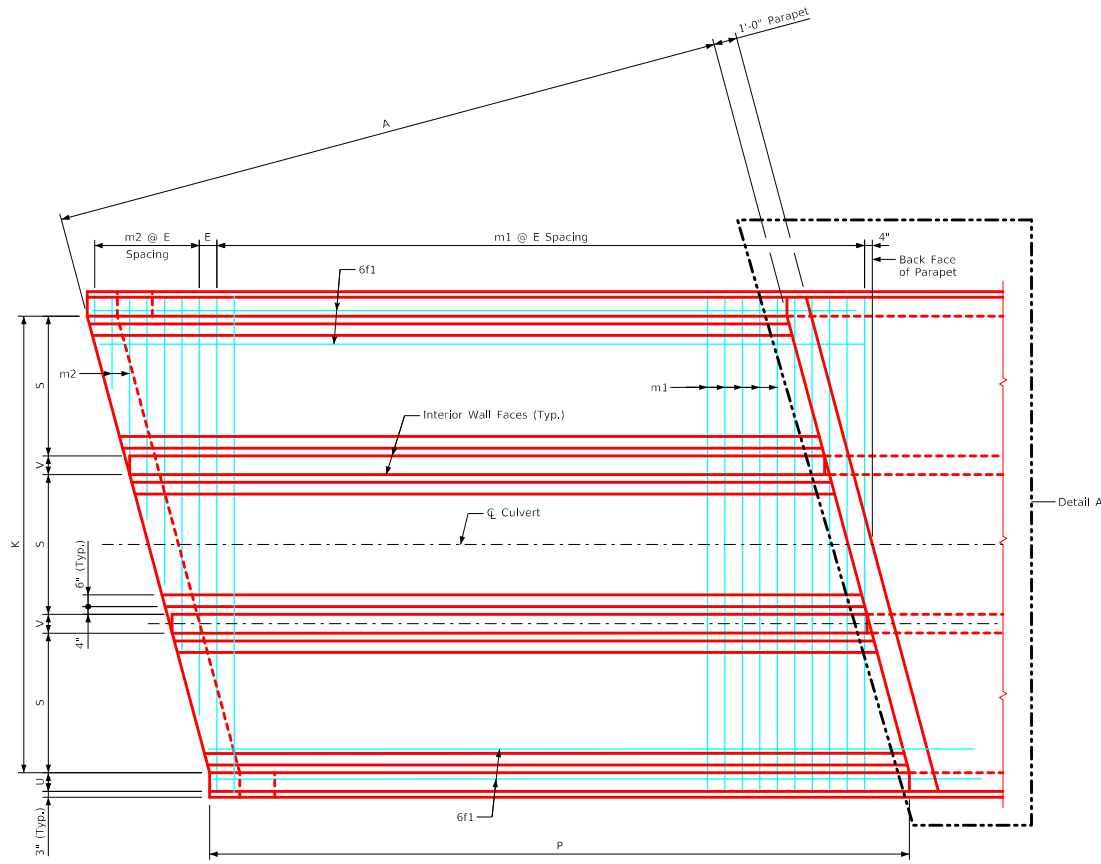
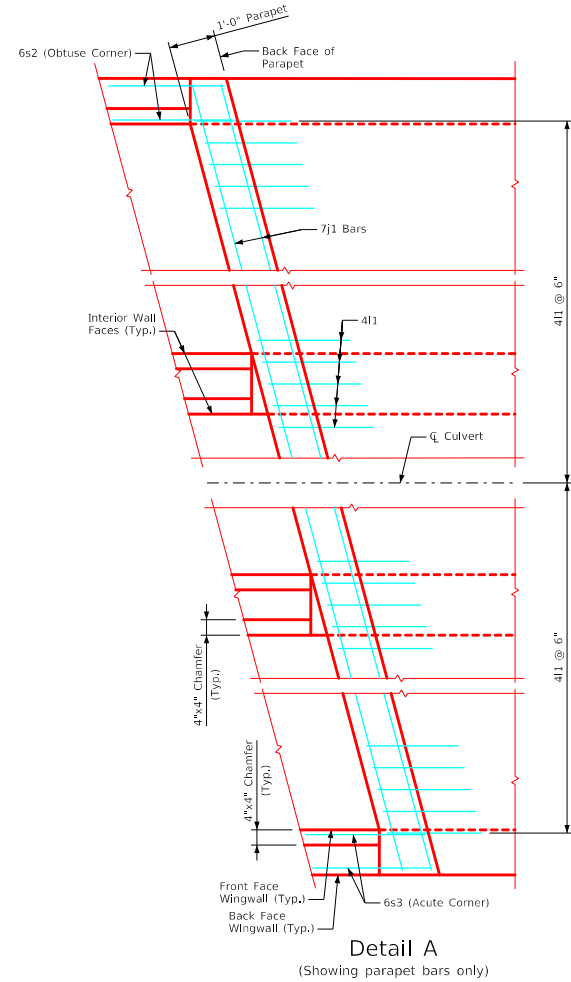


ENGLISHLRFDDESIGNEDTRIPLECULVERTS.DGN - TRPWH 15-5-20 - THIS SHEET ISSUED 07-2020.



Plan View - Top Apron Reinforcing
(Wall Reinforcing not shown for clarity)



Detail A
(Showing parapet bars only)

Notes:

1. Bar spacings and positions shown are similar for all sizes of headwalls in this standard.
2. For headwall dimensions and bar spacing see Sheet TRPWH 15-1-20.
3. Top transverse apron bars are referenced approximately 4" from the back of the parapet for all headwalls.

LATEST REVISION DATE	APPROVED BY BRIDGE ENGINEER		
		Standard Design - Triple Reinforced Concrete Box Culverts Parallel Wing Headwalls July, 2020	
		Parapet Reinforcing & Top Apron Reinforcing 15° Skew	TRPWH 15-5-20