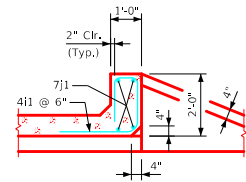
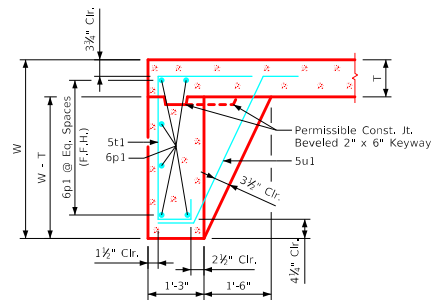


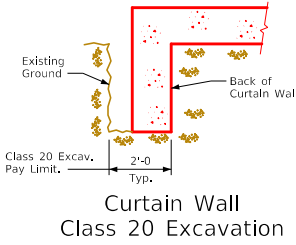
Revised 08-2022: Changed chamfer at top of interior walls to 3/4" x 3/4" (was 4" x 4").  
 ENGLISH\DESIGNED\TRIPLECULVERTS.DGN - TRPWH 15-2-20 - THIS SHEET ISSUED 07-2020.



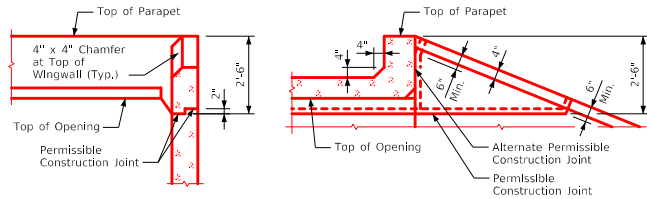
Section thru Parapet



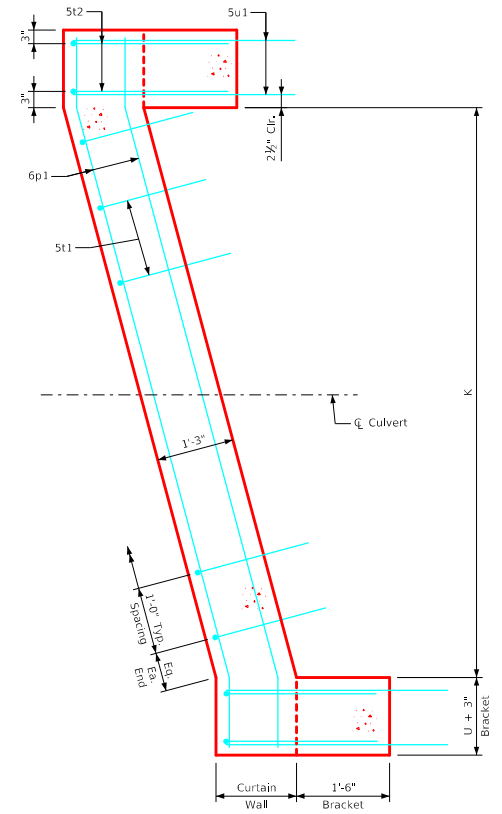
Section thru Curtain Wall



Curtain Wall  
Class 20 Excavation



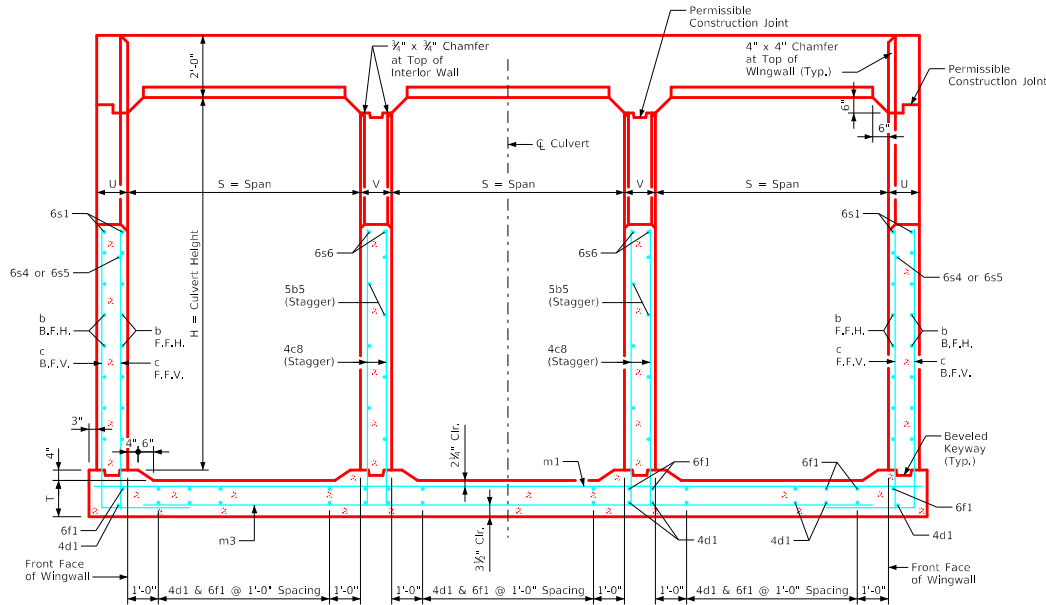
Top of Wingwall Details



Curtain Wall Detail - Plan View  
(Apron is not shown)

Notes:

1. See Sheet TRRCB G2-20 for General Notes, Specifications, and Design Stresses.
2. For dimension table see Sheet TRPWH 15-1-20.



Typical Cross Section - thru Headwall

LATEST REVISION DATE August 2022 APPROVED BY BRIDGE ENGINEER		
	Standard Design - Triple Reinforced Concrete Box Culverts <b>Parallel Wing Headwalls</b> July, 2020	
	Cross Section Details 15° Skew	TRPWH 15-2-20