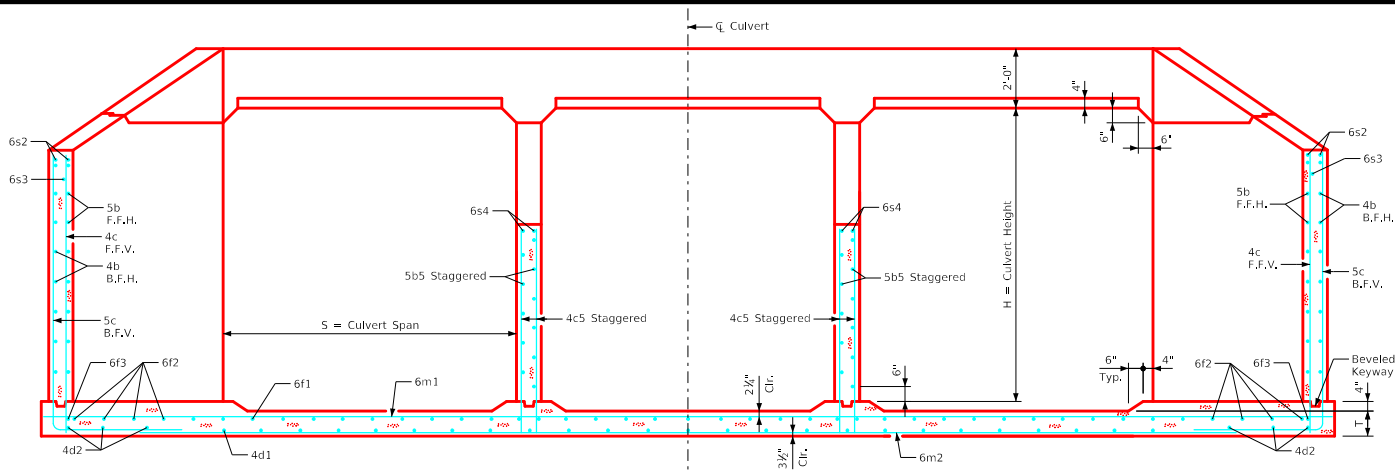
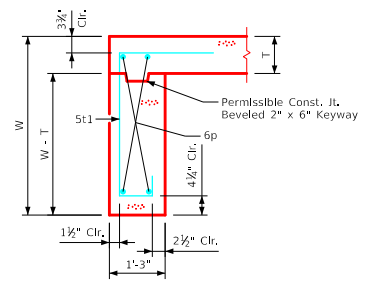


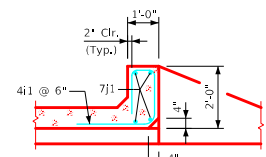
ENGLISH\DESIGNED\TRIPLECULVERTS\FWH.DGN - TRFWH 0-3-21 - THIS SHEET ISSUED 02-2021.



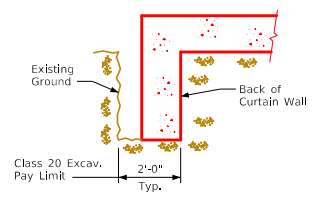
Typical Section - Near Center of Apron



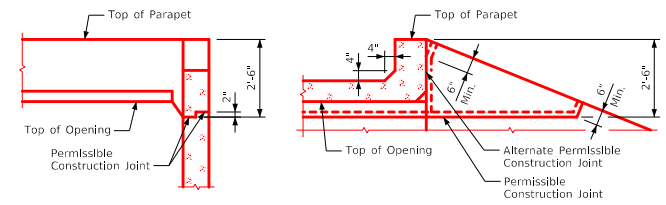
Section thru Curtain Wall



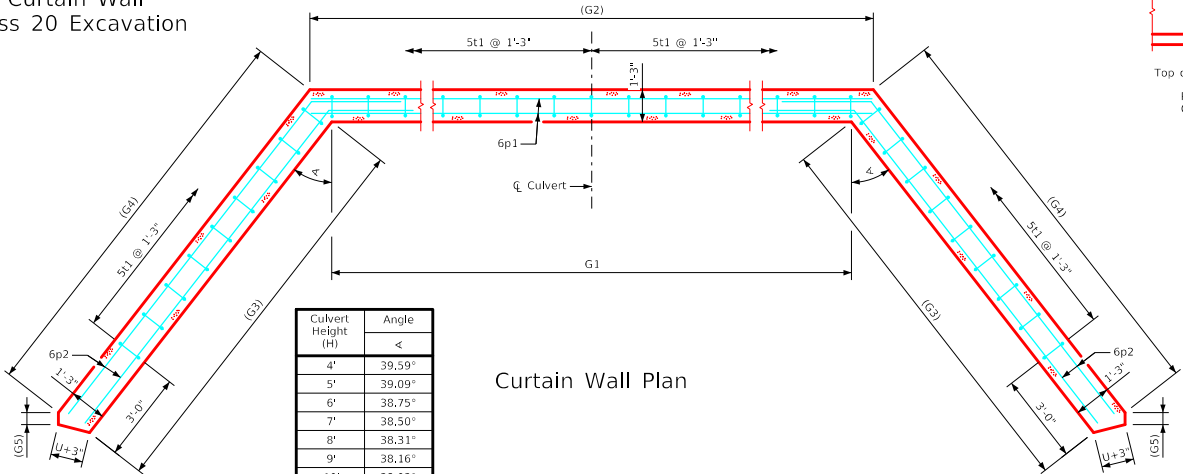
Section thru Parapet



Curtain Wall Class 20 Excavation



Top of Wingwall Details



Curtain Wall Plan

Culvert Height (H)	Angle
	<
4'	39.59°
5'	39.09°
6'	38.75°
7'	38.50°
8'	38.31°
9'	38.16°
10'	38.03°
11'	37.93°
12'	37.85°

Notes:

1. See Sheet TRFWH G1-21 for General Notes, Specifications, and Design Stresses.
2. For dimension table see Sheet TRFWH 0-1-21.

LATEST REVISION DATE	APPROVED BY BRIDGE ENGINEER	Standard Design - Triple Reinforced Concrete Box Culverts	
		Flared Wing Headwalls	
		February, 2021	
		Parapet & Curtain Wall Details 0° Skew	TRFWH 0-3-21