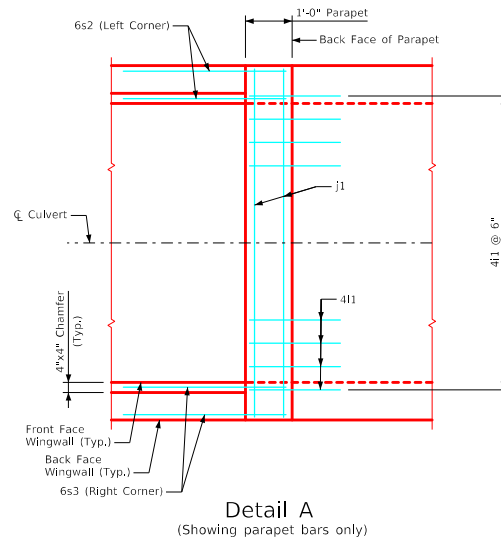
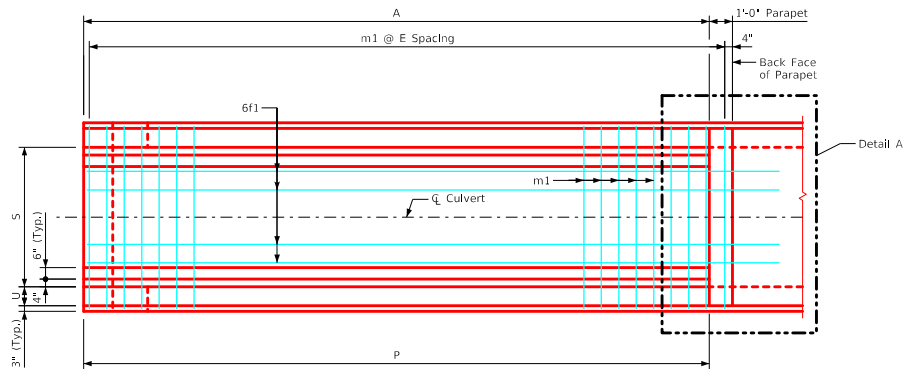


ENGLISHLRFDDESIGNEDSINGLECULVERTS.DGN - PWH 0-4-20 - THIS SHEET ISSUED 07-2020.




Detail A
(Showing parapet bars only)



Plan View - Top Apron Reinforcing
(Wall Reinforcing not shown for clarity)

Notes:

1. Bar spacings and positions shown are similar for all sizes of headwalls in this standard.
2. For headwall dimensions and bar spacing see Sheet PWH 0-1-20.
3. Top transverse apron bars are referenced approximately 4" from the back of the parapet for all headwalls.

LATEST REVISION DATE	APPROVED BY BRIDGE ENGINEER	 Standard Design - Single Reinforced Concrete Box Culverts	
		Parallel Wing Headwalls July, 2020	
		Parapet Reinforcing & Top Apron Reinforcing 0° Skew	PWH 0-4-20