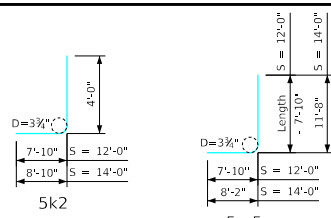


ENGLISH_LRFD_SIGNED_PRECAST_PEDESTRIAN_TUNNEL_STANDARDS.DGN - PPT-FWH 0-5-20 - THIS SHEET ISSUED 08-2020

Reinforcing for One Barrel End Section

Bar	Location	Shape	14' x 11'-10"		12' x 11'-10"		12' x 10'-10"		
			No.	Length	No.	Length	No.	Length	
5a1	Barrel End Section Walls, F.V.V.		18	13'-8"	18	13'-7"	18	12'-6"	
4b5	Barrel End Section Walls, F.F.H. & B.F.H.		46	4'-4"	133	4'-4"	133	4'-4"	
5e1	Barrel End Section Slab, Bott. Longit.		13	4'-4"	59	4'-4"	50	4'-4"	
4e2	Barrel End Section Slab, Top Longit.		12	4'-4"	35	4'-4"	29	4'-4"	
4f4	Barrel End Section Floor, Top Longit.		15	4'-4"	43	4'-4"	38	4'-4"	
4f5	Barrel End Section Floor, Bott. Longit.		12	4'-4"	35	4'-4"	29	4'-4"	
6k1	Barrel End Section Slab, Bott. Transv.		9	15'-8"	212	9	13'-8"	185	9
5k2	Barrel End Section Slab, Top Corner		18	12'-10"	241	18	11'-10"	222	18
6m4	Barrel End Section Floor, Top Transv.		9	16'-2"	219	9	14'-2"	192	9
5m5	Barrel End Section Floor, Bott. Corner		18	19'-10"	372	18	19'-5"	365	18
3p1	Barrel Haunch		10	3'-9"	14	10	3'-9"	14	10
5z1	Dowel Reinforcing Bars		54	2'-6"	141	50	2'-6"	130	48
Reinf. Steel			1761 LB		1642 LB		1579 LB		
Estimated Concrete Quantities one Barrel End Section			Slab 3.2	2.8		2.8		8.6 CY	
			Floor 3.4	2.9		2.8			
			Walls 3.7	3.7		3.0			

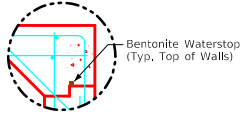
Bent Bar Details



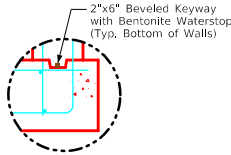
Note: All dimensions are out to out. D = pin diameter.

Dimension Table

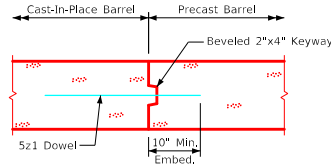
S x H2	14' x 11'-10"	12' x 11'-10"	12' x 10'-10"
D	12.5"	12"	12"
E	15"	14.5"	14"
F	12"	12"	11"



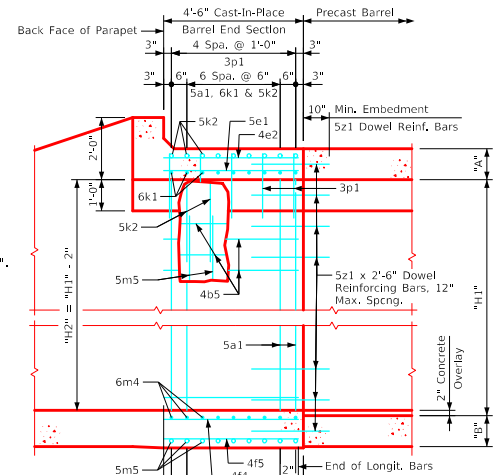
Detail A



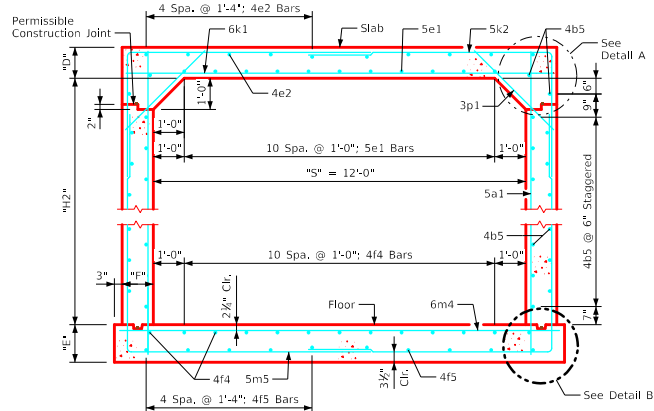
Detail B



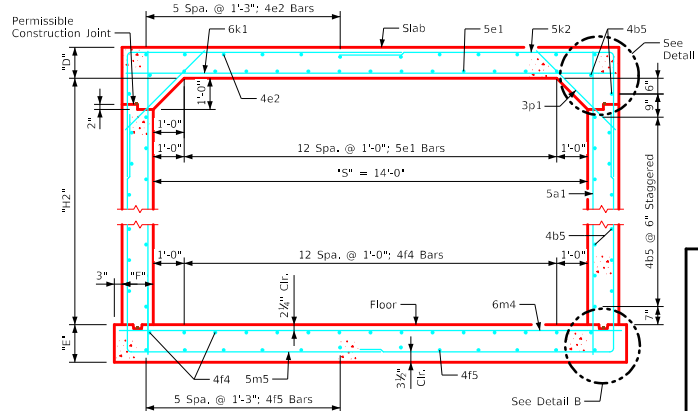
Joint Detail at Cast-In-Place Barrel Connection



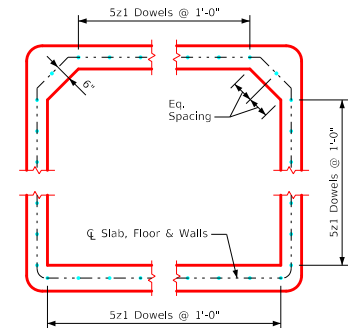
Part Longitudinal Section (Along C-C Culvert)



Barrel End Section - "S" = 12'-0"



Barrel End Section - "S" = 14'-0"



Part Precast Barrel Section (Showing Dowel Placement)

LATEST REVISION DATE		APPROVED BY BRIDGE ENGINEER		
			Precast Standard Design - Walkways and Trails	
			Precast Reinforced Concrete Pedestrian Tunnel	
			August, 2020	
			Barrel End Sections	PPT-FWH 0-5-20
			0° SKEW	