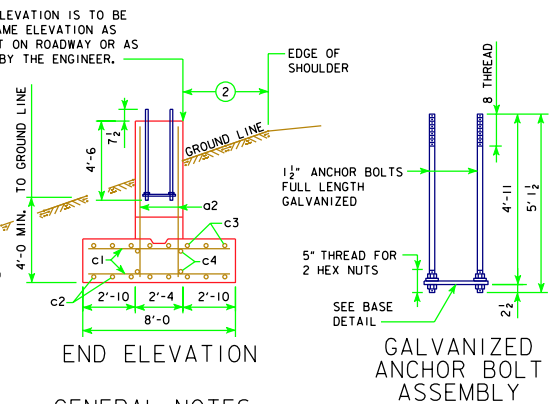
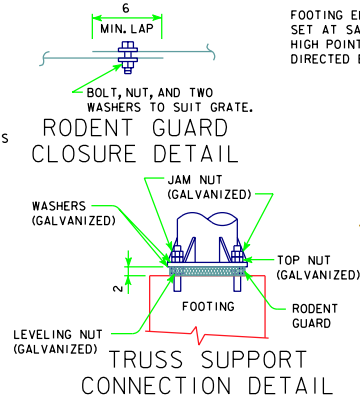
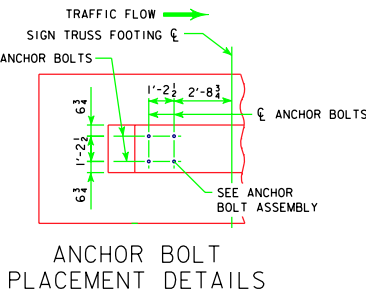
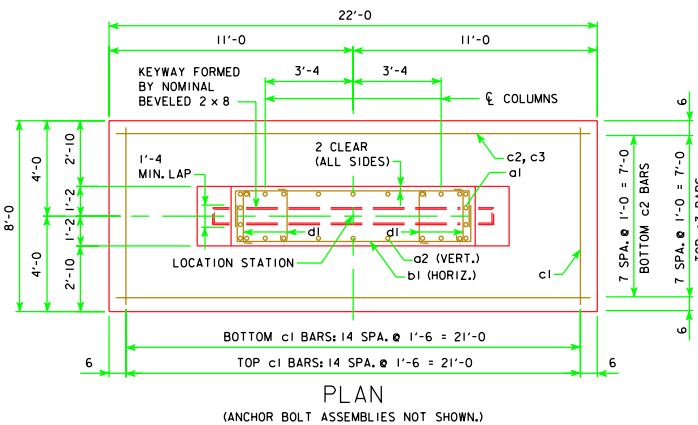
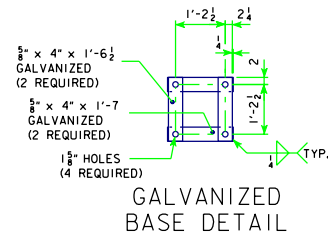


REVISED 05-07 - REMOVED PLUS INFORMATION, REMOVED HARDWARE CLASSIFICATION TABLE CORRECTION 05-09 - CORRECTED THE NUMBER OF C1 BARS IN THE "END ELEVATION" VIEW. CORRECTED THE NUMBER OF C2 & C3 BARS IN THE "SIDE ELEVATION" VIEW.



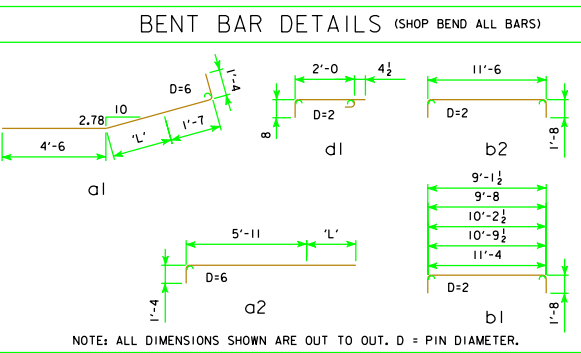
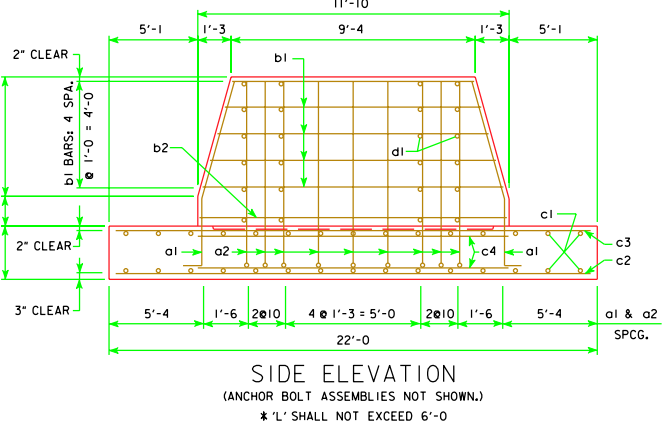
GENERAL NOTES:

- STRUCTURAL CONCRETE, CLASS C, SHALL BE USED FOR THE FOOTING.
- EXCAVATION FOR FOOTING SHALL BE TO NEAT LINES AND CONCRETE SHALL BE PLACED AGAINST THE UNDISTURBED MATERIAL. ALL EXCAVATION FOR THE FOOTING SHALL BE DISPOSED OF IN THE AREA ADJACENT TO THE FOOTING AND SHAPED TO NORMAL GROUND CONTOUR, UNLESS OTHERWISE DIRECTED BY THE ENGINEER. MAXIMUM DESIGN BEARING CAPACITY IS 1.0 TONS PER SQUARE FOOT.
- THE REQUIREMENTS PER FOOTING ARE TWO ANCHOR BOLT ASSEMBLIES INCLUDING SHIMS, NUTS (5 PER BOLT) AND WASHERS. REFER TO HARDWARE CLASSIFICATION TABLE FOR MATERIALS AND GALVANIZING REQUIREMENTS.
- A RODENT GUARD SHALL BE PLACED BETWEEN THE CONCRETE FOOTING AND THE BASE PLATE, SEE MATERIALS I.M. 443.01.
- PRICE BID FOR CONTRACT ITEMS SHALL INCLUDE ALL LABOR AND MATERIALS NECESSARY TO CONSTRUCT OVERHEAD SIGN FOOTING AS DETAILED HEREON. THE COST OF FURNISHING AND INSTALLING ANCHOR BOLT ASSEMBLIES, AND RODENT GUARDS ARE TO BE INCLUDED IN THE UNIT PRICE BID FOR STRUCTURAL CONCRETE. CONTRACT ITEMS FOR OVERHEAD SIGN FOOTING CONSTRUCTION ARE:
EPOXY COATED REINFORCING STEEL, POUNDS
STRUCTURAL CONCRETE (MISCELLANEOUS), CUBIC YARDS
EXCAVATION, CUBIC YARDS OF CLASS SPECIFIED



CONCRETE PLACEMENT QUANTITIES
(ONE FOOTING)

| ITEM | 'L' = 0 | EACH 1'-0" OF 'L' |
|--------------|---------|-------------------|
| WALL | 4.12 | 1.02 |
| FOOTING | 13.04 | |
| TOTAL (C.Y.) | 17.16 | 1.02 |



REINFORCING BAR LIST - EPOXY COATED
(ONE FOOTING)

| | SIZE | SHAPE | 'L' = 0 | | | EACH 1'-0" OF 'L' | | | | |
|----|------|-------|----------------|----------|--------|-------------------|--------|----------|-----|--|
| | | | NO. | LENGTH | WEIGHT | NO. | LENGTH | WEIGHT | | |
| a1 | 8 | | 8 | 7'-5 | 158 | SEE DETAIL | 8 | 1'-0 (A) | 21 | |
| a2 | 8 | | 18 | 7'-3 | 348 | SEE DETAIL | 18 | 1'-0 (A) | 48 | |
| b1 | 4 | | 10 | Varies | 91 | 1'-0 | --- | --- | --- | |
| b2 | 4 | | --- | --- | --- | --- | 2 (B) | 14'-10 | 20 | |
| c1 | 6 | | 30 | 7'-6 | 338 | 1'-6 | --- | --- | --- | |
| c2 | 8 | | 8 | 21'-6 | 459 | 1'-0 | --- | --- | --- | |
| c3 | 6 | | 8 | 21'-6 | 258 | 1'-0 | --- | --- | --- | |
| c4 | 4 | | 4 | 11'-10 | 32 | SEE DETAIL | --- | --- | --- | |
| d1 | 4 | | 20 | 3'-0 1/2 | 41 | SEE DETAIL | 4 (C) | 3'-0 1/2 | 8 | |
| | | | TOTAL 1725 lbs | | | TOTAL 97 lbs | | | | |

- (A) ADDITIONAL LENGTH TO BAR a1 OR a2 FOR 'L' > 0
- (B) TWO IN EACH 1'-0 OF 'L'.
- (C) FOUR IN EACH 1'-0 OF 'L'.

05-09
LATEST REVISION DATE

APPROVED BY BRIDGE ENGINEER

Iowa Department of Transportation
Highway Division

STANDARD DESIGN
ALUMINUM OVERHEAD SIGN TRUSS
WITH GALVANIZED STEEL SUPPORTS
FEBRUARY, 2006

50' TO 100' SPANS

FOOTING DETAILS

STOH-15-06