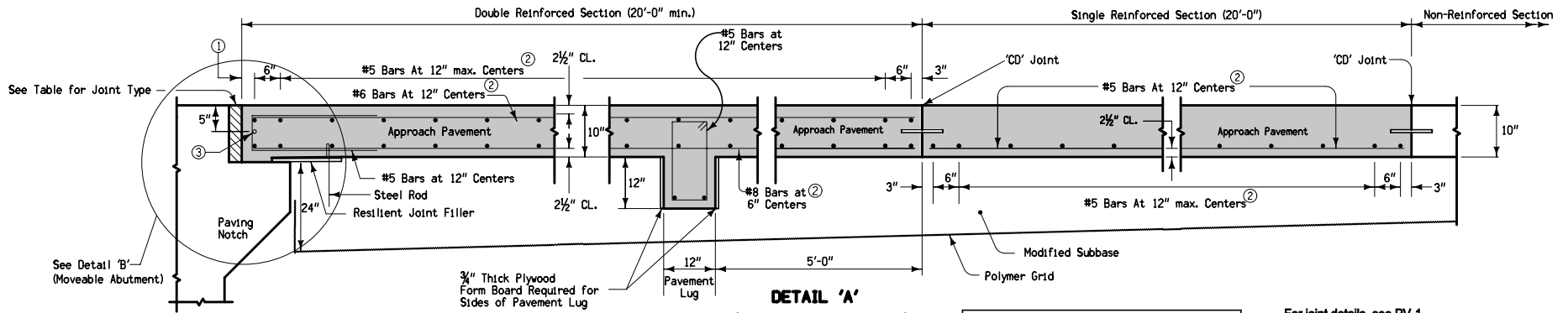
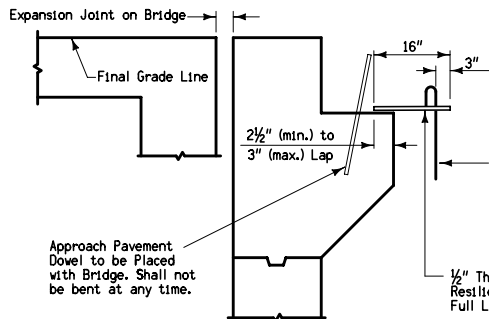


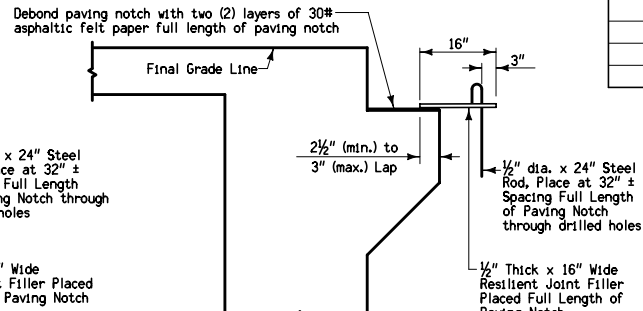
DETAIL 'A'
(Fixed Abutment)



DETAIL 'A'
(Moveable Abutment)



DETAIL 'B' (Fixed Abutment)



DETAIL 'B' (Moveable Abutment)

JOINT TYPE FOR MOVEABLE ABUTMENT BRIDGES		
Joint	Maximum Bridge Length	
	Concrete Beam or Slab	Steel Girder
CF-1	370'	250'
CF-2	465'	320'
CF-3	575'	400'

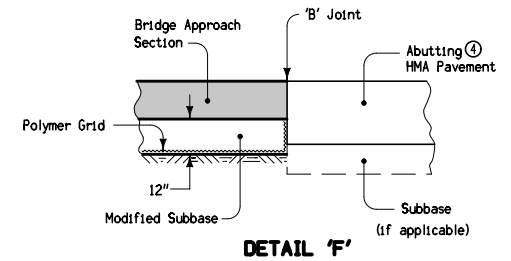
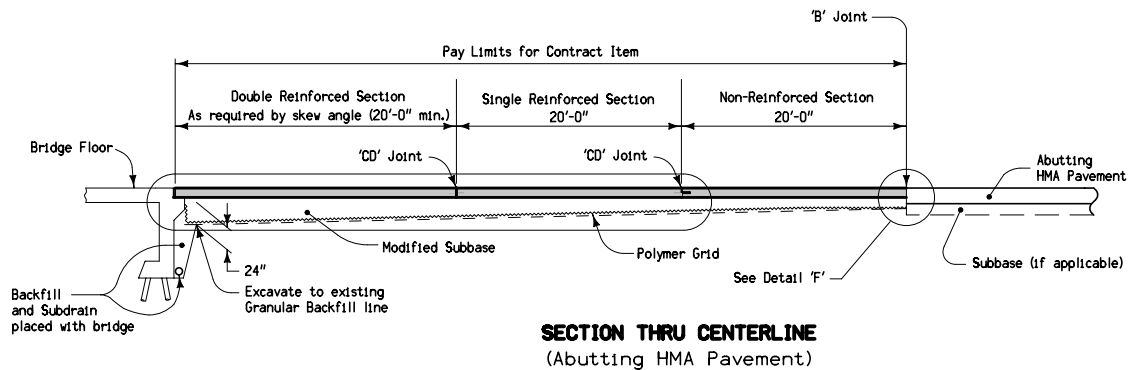
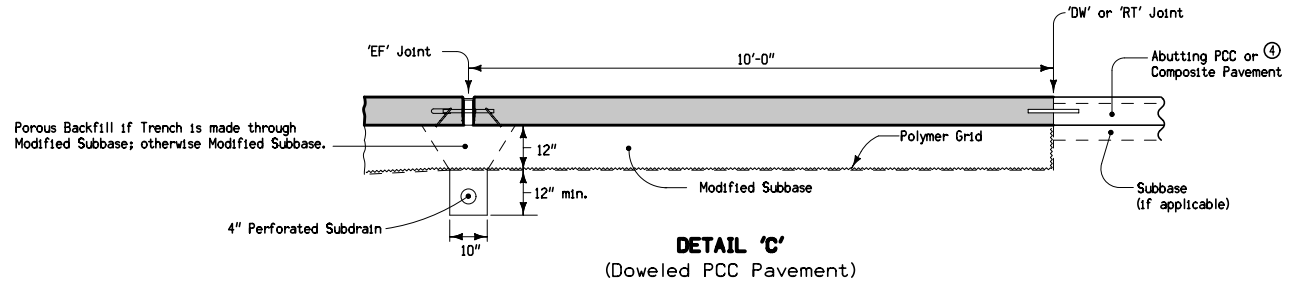
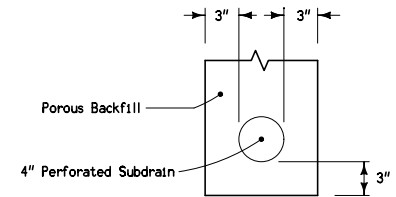
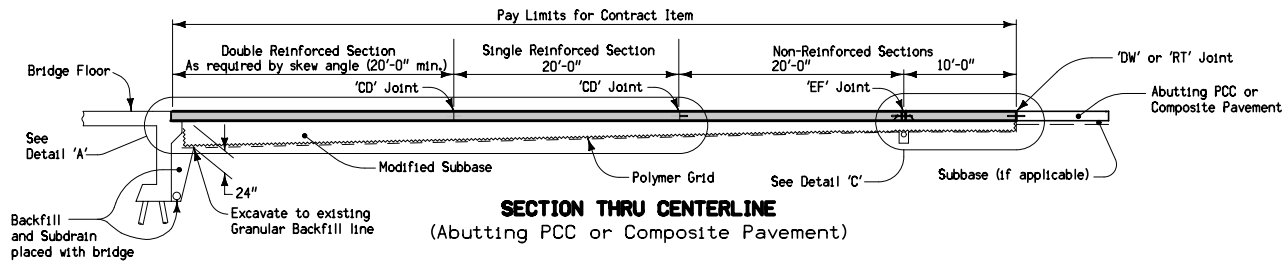
For joint details, see PV-1.
All transverse bars are #5.

Possible Contract Item:
Bridge Approach, RK-25

Possible Tabulation:
112-6

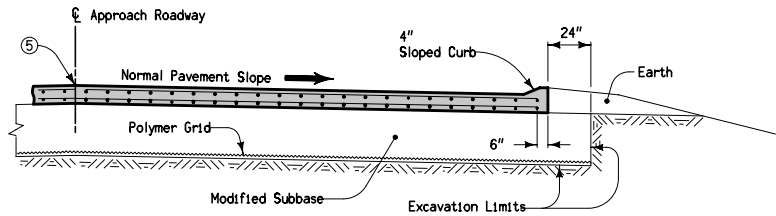
- ① 2" min. to 2 1/2" max. clear to bent bar.
- ② Minimum lap length: #5 Bars - 18"
#6 Bars - 27"
#8 Bars - 48"
- ③ If bridge is skewed, place additional #5 bar parallel to skewed face.

 Iowa Department of Transportation STANDARD ROAD PLAN	REVISION 5 04-20-10
	RK-25
	SHEET 1 of 3
<small>REVISIONS: Updated references to renamed standards.</small> APPROVED BY DESIGN METHODS ENGINEER	
DOUBLE REINFORCED 10" APPROACH	

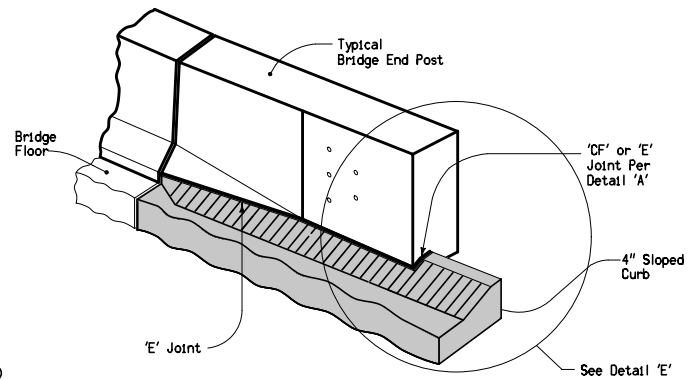


④ If abutting pavement (PCC or HMA) is not in place, see RK-30.

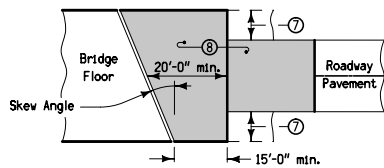
<p>Iowa Department of Transportation</p> <p>STANDARD ROAD PLAN</p> <p>REVISIONS: Updated references to renamed standards.</p> <p><i>Deanna Mifflin</i> APPROVED BY DESIGN METHODS ENGINEER</p> <p>DOUBLE REINFORCED 10" APPROACH</p>	<p>REVISION</p> <p>5 04-20-10</p>
	<p>RK-25</p> <p>SHEET 2 of 3</p>



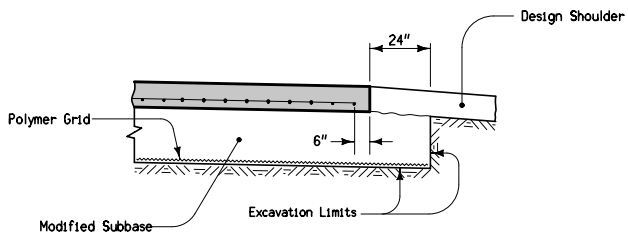
SECTION A-A ⑥



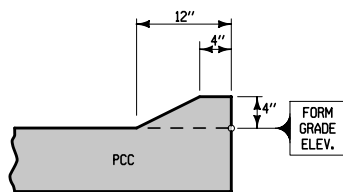
DETAIL 'D' ⑥
(Joint Placement)



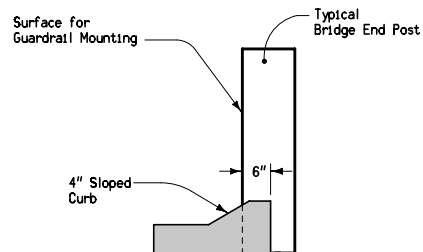
**APPROACH PAVEMENT
LAYOUT AT A SKEW**



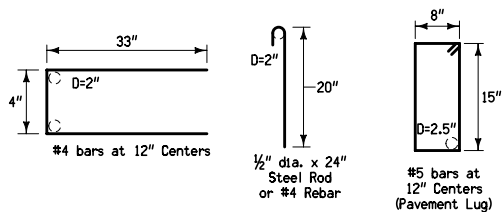
SECTION B-B ⑥



4" SLOPED CURB



DETAIL 'E'
(Back of Curb Placement)



BENT BAR SHAPES

- ⑤ Longitudinal Joint: (PV-1)
Single pour — Saw cut joint per Detail B.
Two pours — Use 'KS-2' Joint
- ⑥ See RK-21, RK-22, or RK-23.
- ⑦ Design shoulder width.
- ⑧ Reinforced bridge approach section.

 Iowa Department of Transportation STANDARD ROAD PLAN	REVISION	
	5	04-20-10
	RK-25	
SHEET 3 of 3		

REVISIONS: Updated references to renamed standards.

Deanna Maifeld
APPROVED BY DESIGN METHODS ENGINEER

DOUBLE REINFORCED 10" APPROACH