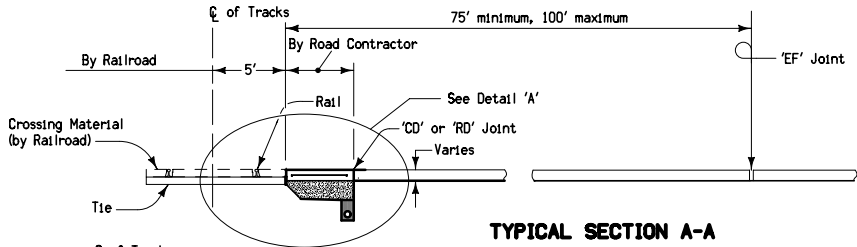
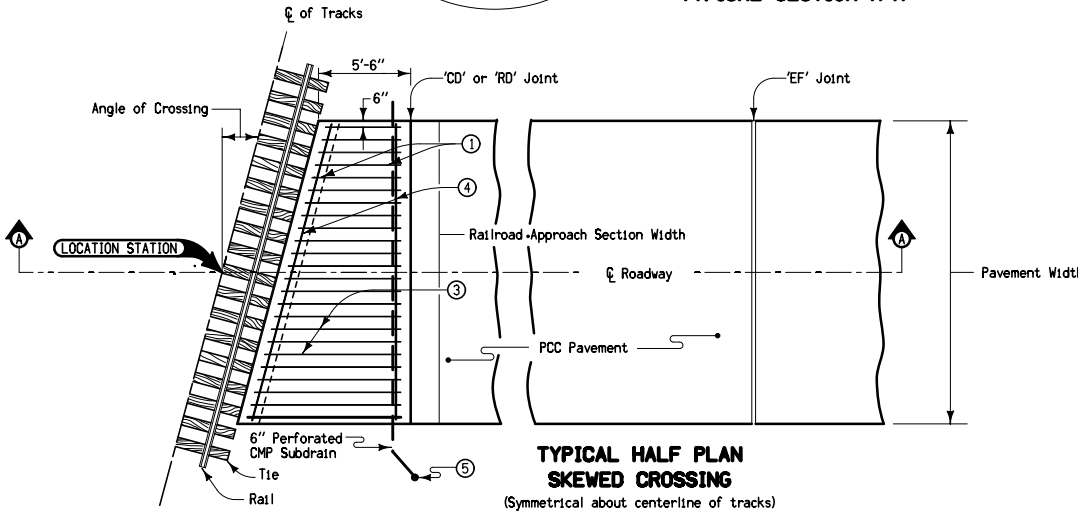


TYPICAL HALF PLAN STRAIGHT CROSSING
(Symmetrical about centerline of tracks)



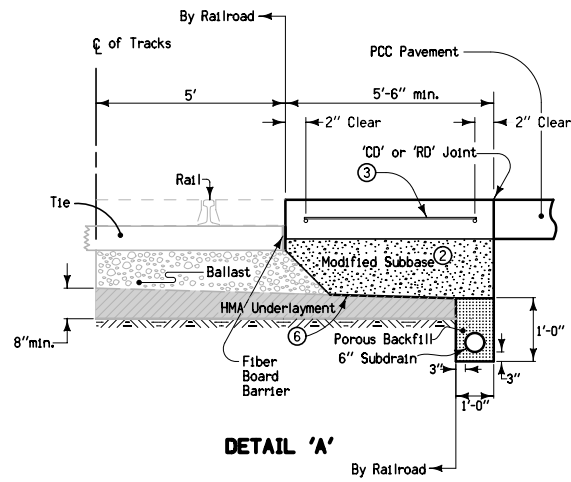
TYPICAL SECTION A-A



TYPICAL HALF PLAN SKEWED CROSSING
(Symmetrical about centerline of tracks)

For joint details, see PV-1.

- ① Reinforcing steel bars shall be wire tied at all intersections with other bars. Reinforcing bars shall be lapped a minimum of 1 foot when necessary and securely wire tied.
- ② Ballast meeting Railroad specifications may be substituted for modified subbase.
- ③ #5 Bars at 12" centers located at half of the pavement thickness.
- ④ #5 Bars x (Approach Width - 4").
- ⑤ Outlet subdrain into ditch or storm sewer. See Standard Road Plans RF-19C and RF-19E. Slope subdrain to drain.
- ⑥ Slope per AREMA specifications.



DETAIL 'A'

Possible Contract Item:
Railroad Approach Section, P.C.C.

Possible Tabulation:
112-3

 Iowa Department of Transportation	REVISION
	17 04-20-10
STANDARD ROAD PLAN	RH-6
REVISIONS: Updated references to renamed standards.	SHEET 1 of 1
<i>Deanna McFalls</i> APPROVED BY DESIGN METHODS ENGINEER	
PCC RAILROAD APPROACH SECTION	