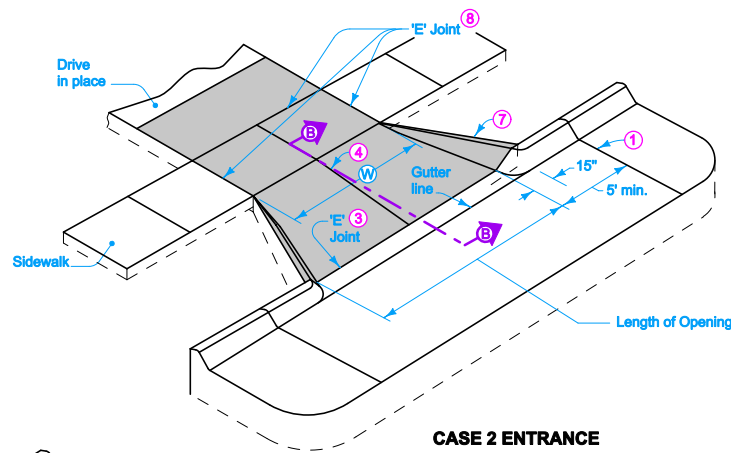
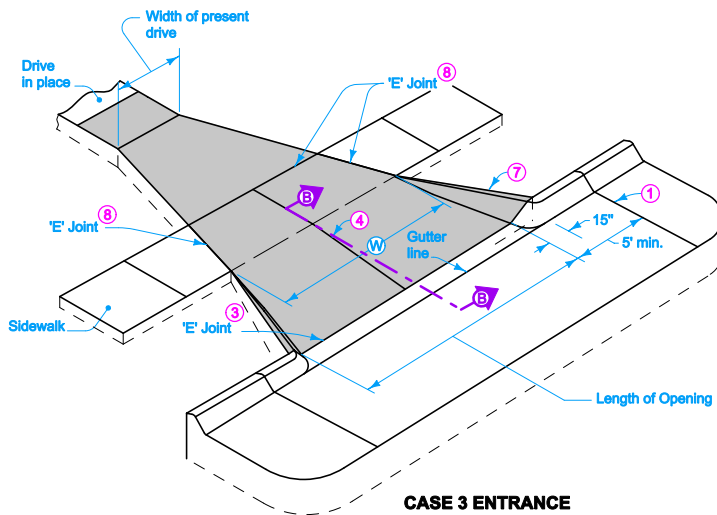


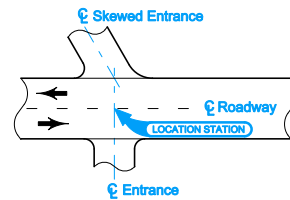
CASE 1 ENTRANCE



CASE 2 ENTRANCE



CASE 3 ENTRANCE



ENTRANCE LOCATION

Special details for entrances other than Cases 1, 2, or 3 are included in the detail plans. The shape and surface of driveways and alleys will vary to fit individual conditions.

Use unreinforced concrete pavement mix with a minimum thickness of 6 inches, unless specified otherwise for driveways and alleys. If an alley drains toward the roadway, use a minimum of 2 inch inverted crown; otherwise, use flat surface for driveway pavement.

Construct sidewalk within the limits of the driveway using the same thickness as the driveway and a maximum 2% cross-slope.

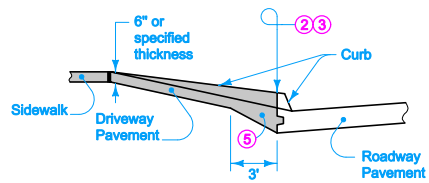
W is measured at the street side of sidewalk. If sidewalk is not present, **W** is to be measured at the end of the returns for Case 1 and 10' back of curb for Cases 2 and 3.

- ① Transverse Pavement Joints as per detail Project Plans.
- ② 'K' Pavement Joint (Refer to PV-1) from end of radius to end of radius.
- ③ Line at the Back of Curb.
- ④ 'C' Joint on Centerline.
- ⑦ Flared return shall be constructed at a 2:1 ratio, with the "2" value measured on a line parallel to entrance centerline.
- ⑧ If the sidewalk is in place at the time of construction, place 'E' Joint along the front edge of the sidewalk. If the sidewalk is reconstructed with the driveway entrance, place 'E' Joint along the back edge of the sidewalk and a 'C' Joint sawed or formed along the front edge of the sidewalk. Refer to PV-1 for joint details.

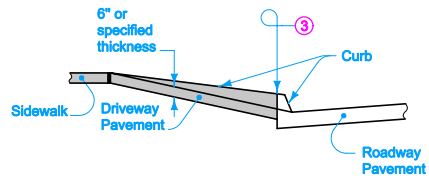
Possible Contract Items:
 Driveway, P.C. Concrete
 Driveway, Reinforced P.C. Concrete
 Removal of Paved Driveway

Possible Tabulation:
 102-3

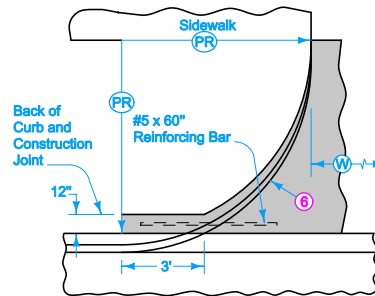
 Iowa Department of Transportation	REVISION
	New 04-20-10
	MI-210
STANDARD ROAD PLAN	SHEET 1 of 2
REVISIONS: New. Replaces RB-3 and Typical 6108. Added Possible Tabulation and Possible Contract Items.	
<i>Deanna Mifflin</i> APPROVED BY DESIGN METHODS ENGINEER	
PCC DRIVEWAYS AND ALLEYS	



**SECTION A-A
(Case 1 Entrance)**

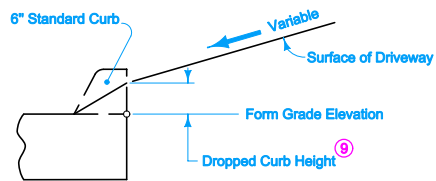
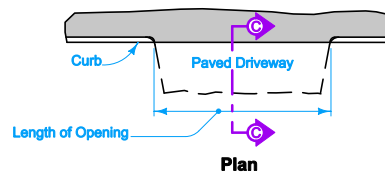


**SECTION B-B
(Cases 2 and 3 Entrance)**

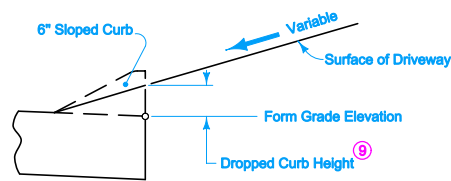


**DETAIL 'A'
CASE 1 ENTRANCE**

- ② 'K' Pavement Joint (Refer to PV-1) from end of radius to end of radius.
- ③ Line at the Back of Curb.
- ⑤ Taper to Pavement Thickness.
- ⑥ Lip curb varies from either 1½ inch or 3 inch at back of curb to 0 inch at front of sidewalk.
- ⑨ Refer to Tabulation 102-3.



**Section C-C
(Standard Curb)**



**Section C-C
(Sloped Curb)**

DROPPED CURB

 Iowa Department of Transportation	REVISION
	New 04-20-10
STANDARD ROAD PLAN	MI-210
SHEET 2 of 2	
REVISIONS: New. Replaces RB-3 and Typical 6108. Added Possible Tabulation and Possible Contract Items.	
<i>Deanna Mairfeld</i> APPROVED BY DESIGN METHODS ENGINEER	
PCC DRIVEWAYS AND ALLEYS	