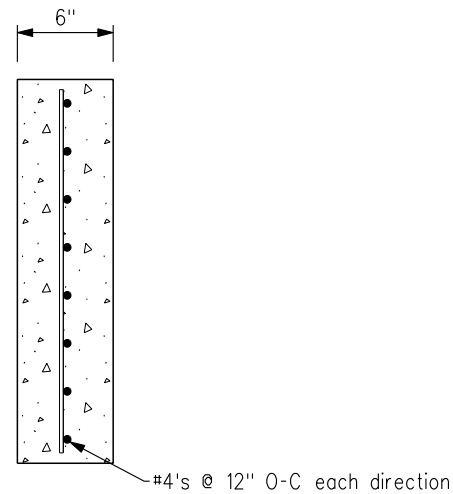


CONCRETE COLLAR



SECTION A-A

GENERAL NOTES:

Anti-seep collars are not required unless specified in the contract documents.

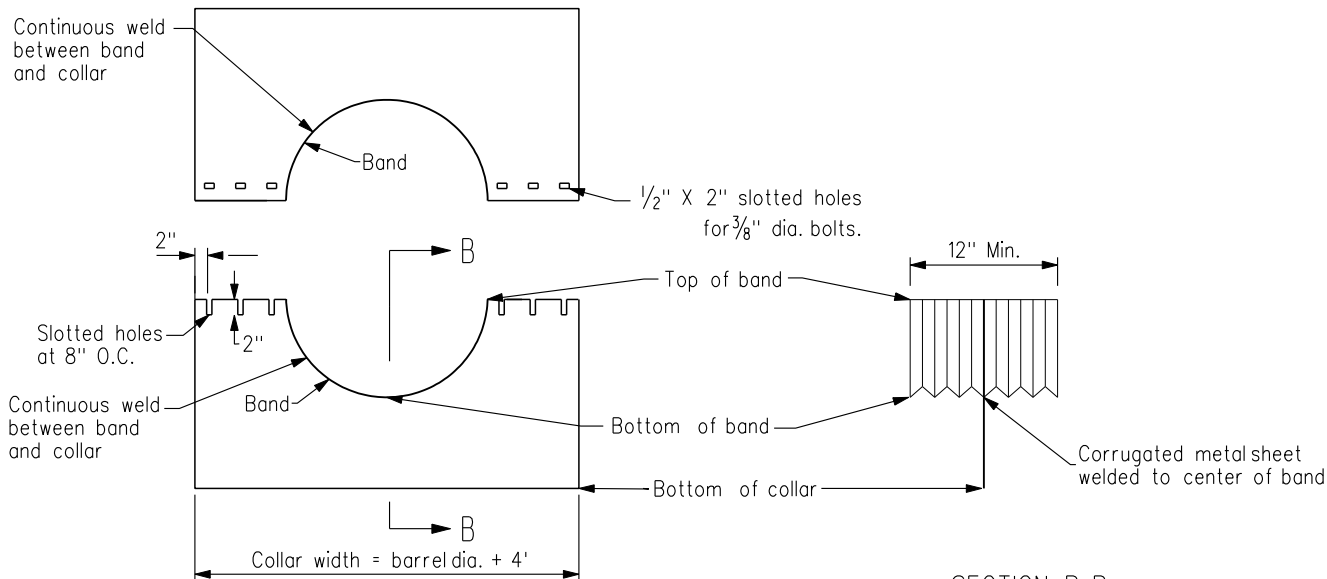
Place backfill and compact overexcavated areas to a minimum of 95% standard Proctor density.

Concrete Collar:

1. Place collars a minimum of 2 ft. from pipe joints.
2. Provide a 4,000 psi (min.) concrete mix per Section 6010.


CMP Collar:

1. Provide collar of same gage as the pipe barrel on which it is used.
2. Paint or tag unassembled collars to identify matching pairs.
3. Furnish each collar with two 1/2 in. dia. rods with tank lugs for connecting collars to pipe.
4. Install collar with corrugations vertical.
5. Seal the lap between the two half-sections and between the pipe and connecting band with a bituminous jointing compound at the time of installation.



SECTION B-B

CMP COLLAR

	REVISION	
	NEW	10/17/06
	FIGURE 9040.17	
	SHEET 1 OF 1	

ANTI-SEEP COLLAR