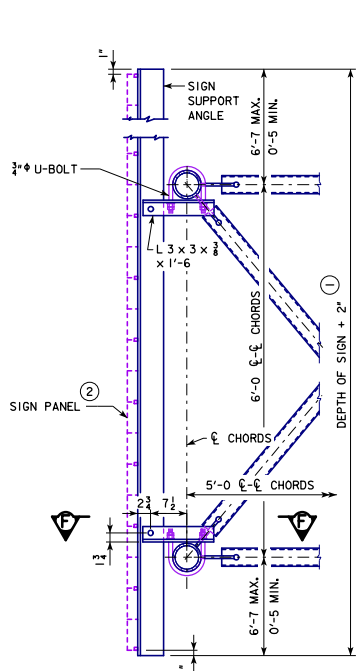
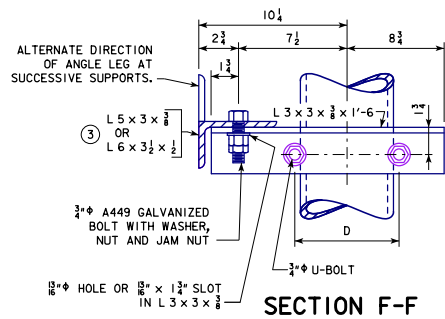


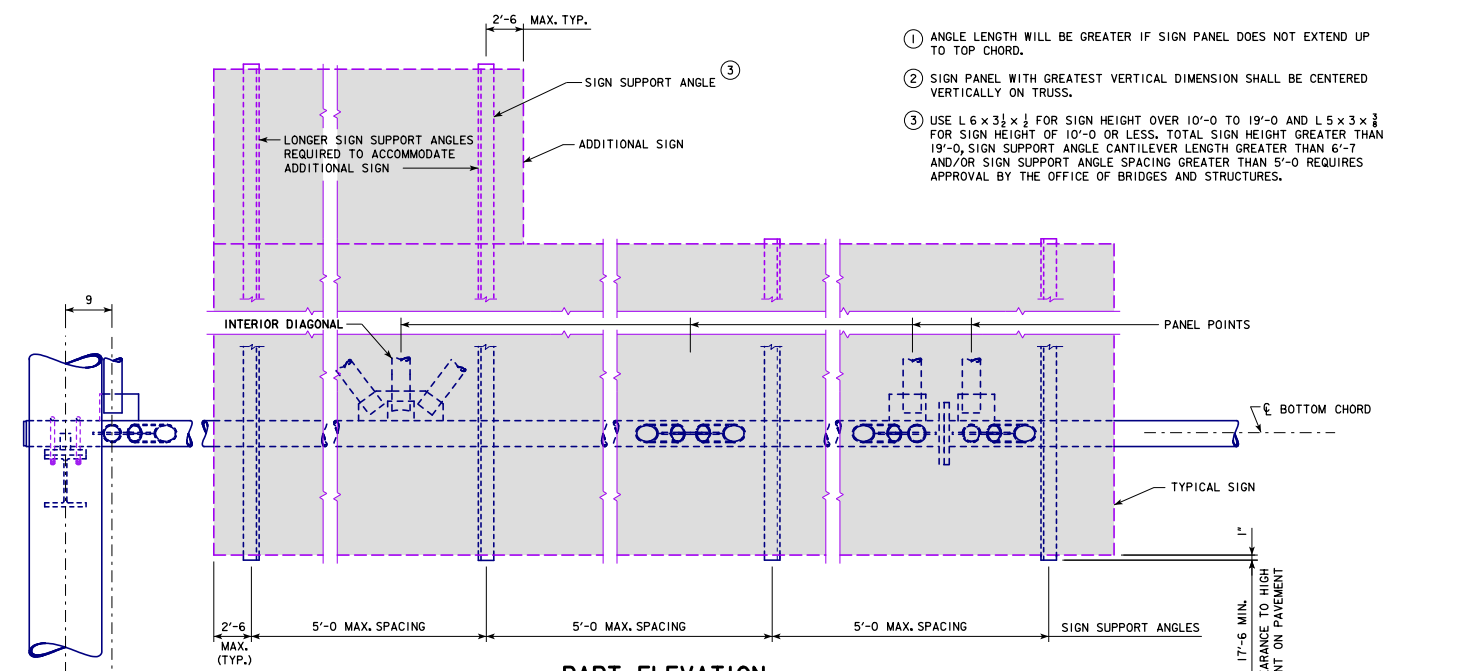
\*REVISED 03-2019; CORRECTED DIMENSIONS SHOWN FOR L 3 x 3 x 3/8 IN TYPICAL SIGN PANEL SECTION AND SECTION F-F; REMOVED NONESSENTIAL WASHER UNDER BOLT HEAD IN SECTION F-F; REPLACED NOTE IDENTIFIER ASTRISKS WITH ENCLOSED NUMBERS TO IMPROVE READABILITY; UPDATED BRIDGE ENGINEER SIGNATURE.  
 \*STEEL OVERHEAD SIGN TRUSS.DGN - SOST-11-11 - THIS SHEET ISSUED 09-2011.



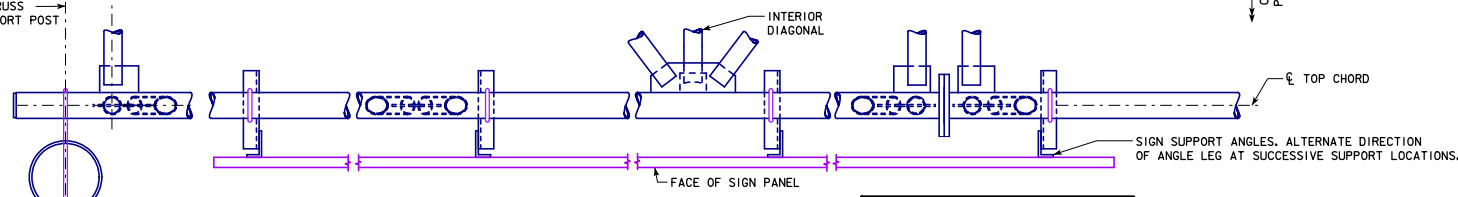
**TYPICAL SIGN PANEL SECTION**



**SECTION F-F**



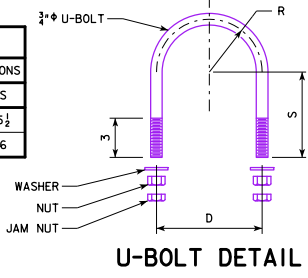
**PART ELEVATION**



**PART PLAN**

SPAN	TRUSS CHORD	U-BOLT DIMENSIONS		
		D	R	S
50' - 100'	5" EXTRA-STRONG STEEL PIPE	6 7/8	3 3/2	5 1/2
105' - 130'	6" EXTRA-STRONG STEEL PIPE	7 1/2	3 3/4	6

**U-BOLT DIMENSION TABLE**



**U-BOLT DETAIL**

- ① ANGLE LENGTH WILL BE GREATER IF SIGN PANEL DOES NOT EXTEND UP TO TOP CHORD.
- ② SIGN PANEL WITH GREATEST VERTICAL DIMENSION SHALL BE CENTERED VERTICALLY ON TRUSS.
- ③ USE L 6 x 3 1/2 x 3/8 FOR SIGN HEIGHT OVER 10'-0" TO 19'-0" AND L 5 x 3 x 3/8 FOR SIGN HEIGHT OF 10'-0" OR LESS. TOTAL SIGN HEIGHT GREATER THAN 19'-0", SIGN SUPPORT ANGLE CANTILEVER LENGTH GREATER THAN 6'-7" AND/OR SIGN SUPPORT ANGLE SPACING GREATER THAN 5'-0" REQUIRES APPROVAL BY THE OFFICE OF BRIDGES AND STRUCTURES.

LOCATE SIGN SUPPORT ANGLES AS CLOSE TO TRUSS PANEL POINTS AS POSSIBLE.

03-2019 LATEST REVISION DATE  APPROVED BY BRIDGE ENGINEER	 STANDARD DESIGN <b>STEEL OVERHEAD SIGN TRUSS</b> SEPTEMBER, 2011	<b>SOST-11-11</b> 50'-130' SPANS	
	<b>SIGN ATTACHMENT DETAILS</b>		