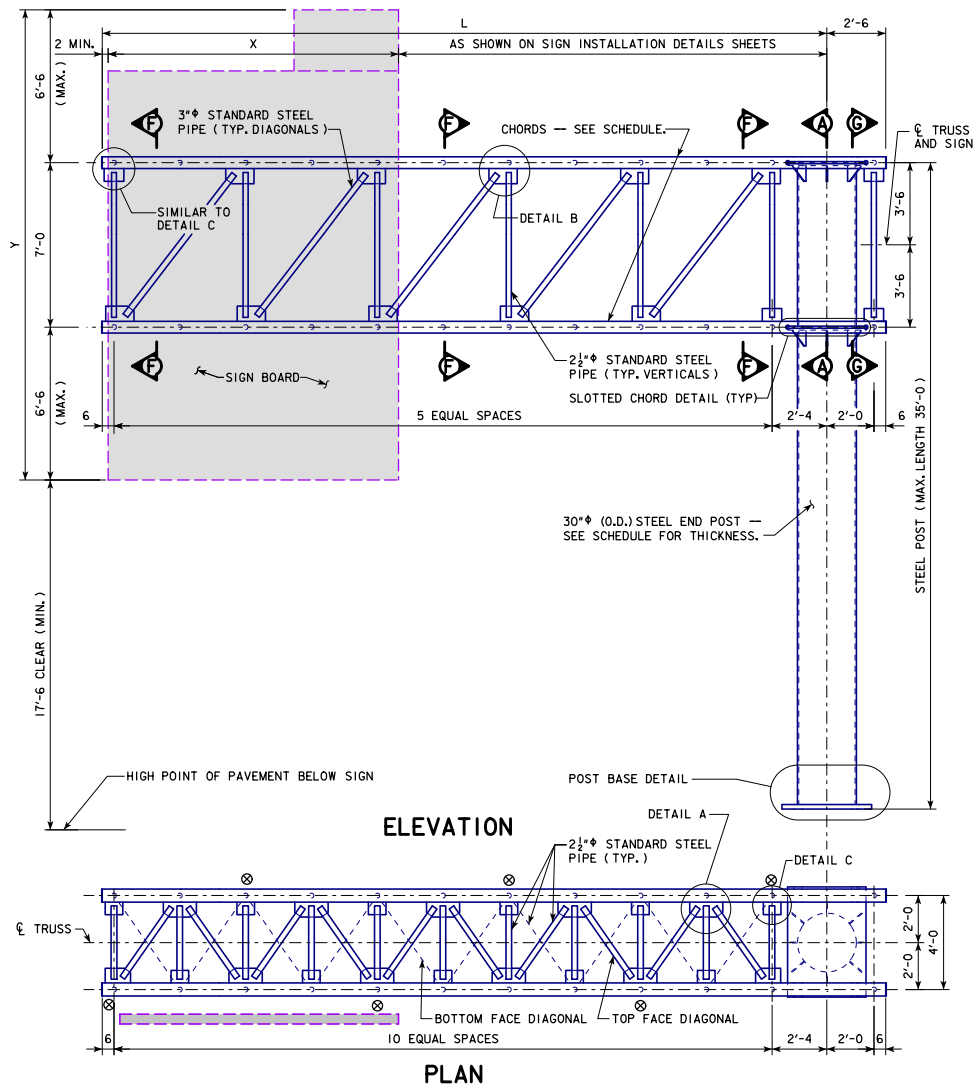


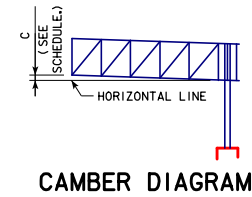
\*REVISED 03-2018; UPDATED BRIDGE ENGINEER SIGNATURE.  
 \*REVISED 03-2019; MODIFIED CHORD SCHEDULE TO ADDRESS MATERIAL AVAILABILITY ISSUES. REPLACED NOTE IDENTIFIER ASTRISKS WITH ENCIRCLED NUMBERS TO IMPROVE READABILITY.  
 \*STEELCANTILEVERSIGNTRUSS.sgn - SCST-02-17 - THIS SHEET ISSUED 07-2017.



⊗ INDICATES THE CONNECTION OF INTERIOR DIAGONALS IN VERTICAL PLANE TO THE TOP CHORD MEMBERS. SEE SECTION F-F.

TRUSS LENGTH MAX. L	MAX. SIGN HEIGHT Y	MAX. SIGN AREA X*Y FT <sup>2</sup>	CHORDS	POST WALL THICKNESS	CAMBER C
40'-0" ①	20'-0"	400	HSS 6.625 x 0.500	0.625"	4"
38'-0"	20'-0"	400	HSS 6.625 x 0.432	0.625"	3½"
36'-0"	20'-0"	400	HSS 6.625 x 0.432	0.625"	3"
34'-0"	20'-0"	400	HSS 6.625 x 0.375 ②	0.625"	2½"
32'-0"	20'-0"	400	HSS 6.625 x 0.375 ②	0.625"	2½"
30'-0"	20'-0"	400	HSS 6.625 x 0.375 ②	0.625"	2"

- ① ALTHOUGH THESE STANDARDS ALLOW FOR A TRUSS MAXIMUM CANTILEVER LENGTH OF 40'-0", THE DESIGNER SHOULD CHECK MATERIAL AVAILABILITY BEFORE SELECTING A TRUSS LENGTH GREATER THAN 39'-6". HSS 6.625 CHORDS ARE TYPICALLY STOCKED IN 42'-0" LENGTHS. A TRUSS LENGTH OF 40'-0" REQUIRES A TOTAL CHORD LENGTH OF 42'-6".
- ② HSS 6.625 x 0.432 MAY BE SUBSTITUTED FOR HSS 6.625 x 0.375 FOR TRUSS LENGTHS FROM 30'-0" TO 36'-0".



SEE STANDARD SHEET SCST-04-17 FOR SECTION A-A.

SEE STANDARD SHEET SCST-05-17 FOR DETAILS A, B AND C; SECTIONS F-F AND G-G; AND SLOTTED CHORD DETAIL.

SEE STANDARD SHEET SCST-06-17 FOR POST BASE DETAIL.

03-2019 LATEST REVISION DATE  APPROVED BY BRIDGE ENGINEER	 STANDARD DESIGN
	<b>STEEL CANTILEVER SIGN TRUSS</b> JULY, 2017
	SIGN SUPPORT VIEWS      SCST-02-17