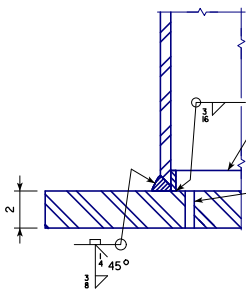
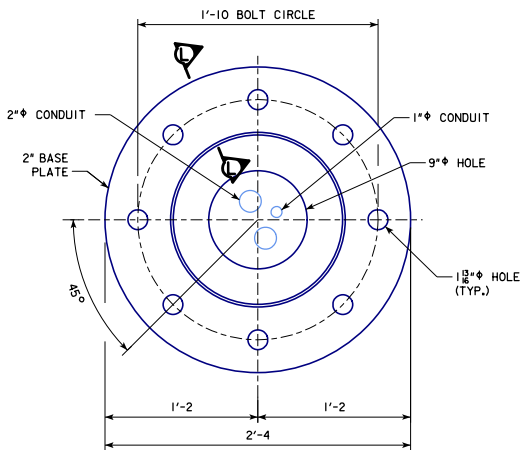


**REVISED 05-2019: INCREASED BASE PLATE THICKNESS FROM 1/2" TO 2" TO ADDRESS CHANGE IN AASHTO SPECIFICATIONS. INCREASED DIAMETER OF BASE PLATE ANCHOR BOLT HOLES FROM 1 1/8" TO 1 3/8".
 **REVISED 05-2019: INCREASED VENT HOLE IN BACKING RING FROM 1/8" TO 3/16" TO ADDRESS CHANGE IN AASHTO SPECIFICATIONS. INCREASED DIAMETER OF POST BASE DETAIL HOLE.
 **REVISED 05-2019: INCREASED CLARITY, REPOSITIONED SECTION CUT L-L IN SECTION K-K TO MORE ACCURATELY REFLECT SECTION L-L. ADDED ANCHOR BOLT ASSEMBLY WEIGHT LOGO IN TITLE BLOCK.
 **REVISED 05-2019: INCREASED CLARITY, REPOSITIONED SECTION CUT L-L IN SECTION K-K TO MORE ACCURATELY REFLECT SECTION L-L. ADDED ANCHOR BOLT ASSEMBLY WEIGHT LOGO IN TITLE BLOCK.
 **ROADSIDEDDMSUPPORT.DGN - RDMS-04-13 - THIS SHEET ISSUED 04-2013.

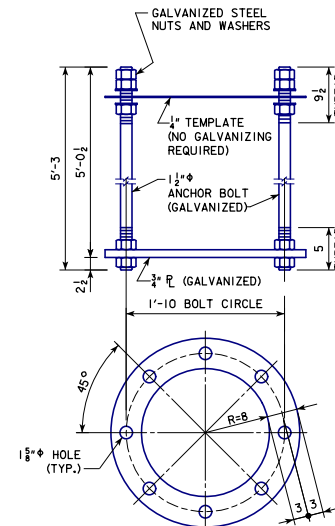


SECTION L-L

1/4" x 1" BACKING RING IS TO BE CONTINUOUSLY WELDED TO THE BASE PLATE. THE BACKING RING SHALL BE ONE PIECE OR MADE CONTINUOUS BY A COMPLETE JOINT PENETRATION WELD. SEAL WITH LIGHT GRAY NON-SAG URETHANE CAULK AFTER GALVANIZING.
 1" Ø GALVANIZING VENT HOLE. GALVANIZING VENTS SHALL BE LOCATED IN THE BASE PLATE IF NEEDED. NO VENT HOLE SHALL BE DRILLED THROUGH THE BACKING RING OR HSS POST. NO VENT HOLE IN BASE PLATE SHALL BE CLOSER THAN 3/8" TO FILLET WELD.

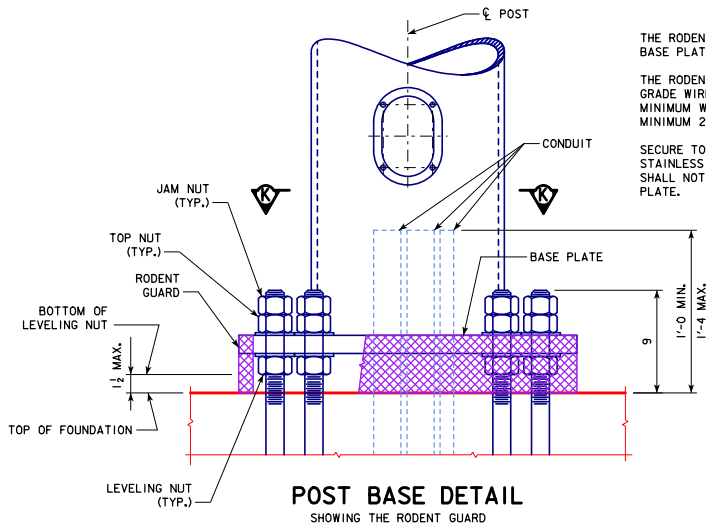


SECTION K-K



ANCHOR BOLT ASSEMBLY

WEIGHT OF ONE ANCHOR BOLT ASSEMBLY: 421 LBS.
 (INCLUDES TEMPLATE, EXCLUDES GALVANIZING WEIGHT)



POST BASE DETAIL
SHOWING THE RODENT GUARD

THE RODENT GUARD SHALL BE PLACED AROUND THE BASE PLATE.

THE RODENT GUARD IS STAINLESS STEEL STANDARD GRADE WIRE CLOTH, 1" MAXIMUM OPENING WITH A MINIMUM WIRE DIAMETER OF AWG NO. 16 WITH A MINIMUM 2" LAP.

SECURE TO BASE PLATE AFTER ERECTION WITH 3/8" STAINLESS STEEL BANDING. THE RODENT GUARD SHALL NOT EXTEND ABOVE THE TOP OF THE BASE PLATE.

SEE STANDARD SHEET RDMS-05-13 FOR ANCHOR BOLT NOTES.

03-2019 LATEST REVISION DATE APPROVED BY BRIDGE ENGINEER	 STANDARD DESIGN ROADSIDE DYNAMIC MESSAGE SIGN (DMS) SUPPORT APRIL, 2013
	SUPPORT POST BASE DETAILS
	RDMS-04-13