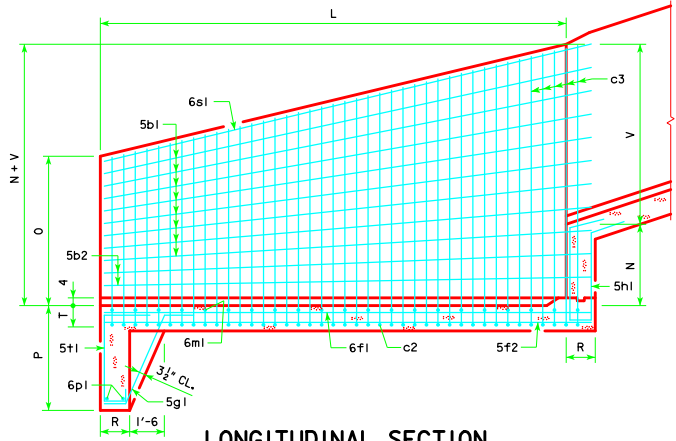
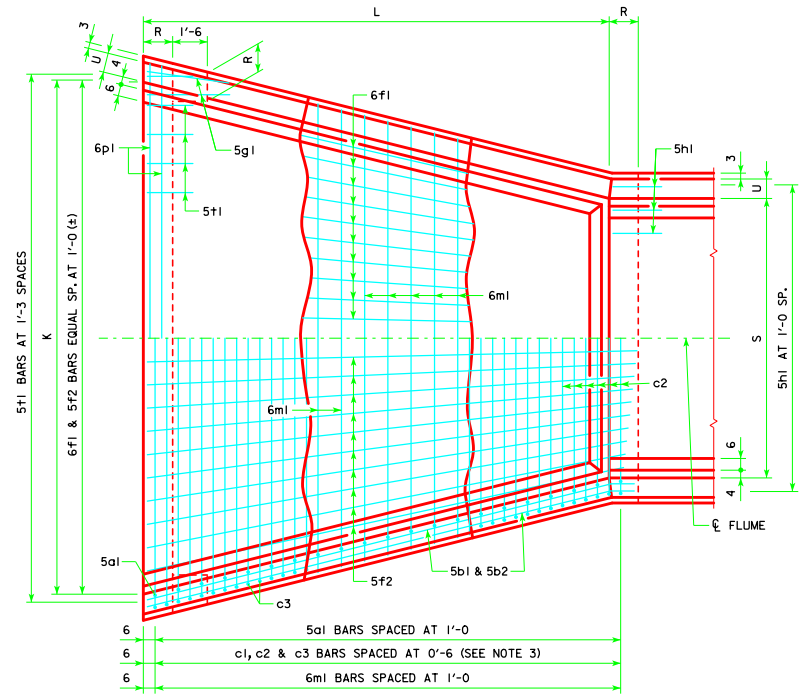


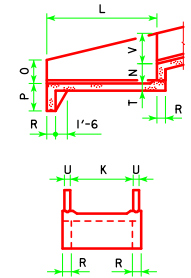
ENGLISH\SIGNEDEL\IMES.DGN -- RCFB-07-12 -- THIS SHEET ISSUED 04-12



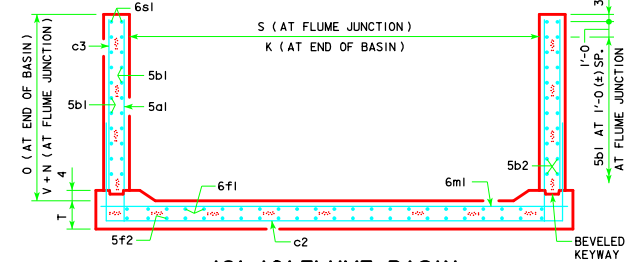
LONGITUDINAL SECTION



PLAN VIEW



END DETAILS



12'x10' FLUME BASIN EXAMPLE SHOWN

FLUME BASIN NOTES:

1. SEE STANDARD SHEET RCF-01-12 FOR GENERAL INFORMATION.
2. c2 & c3 BARS ARE LAPPED.
3. c1 BARS ARE OMITTED IF BOTH S AND H ARE EQUAL TO OR LARGER THAN 8' AND 9' RESPECTIVELY.
4. SEE STANDARD SHEET RCF-06-12 FOR FLUME BASIN QUANTITIES.

| | | |
|---|---|--|
| LATEST REVISION DATE <i>Thomas E. McQuill</i> APPROVED BY BRIDGE ENGINEER | Iowa Department of Transportation Highway Division | STANDARD DESIGN REINFORCED CONCRETE BOX CULVERTS APRIL, 2012 |
| | FLUME BASIN DETAILS 12' SPAN | |
| | RCFB-07-12 | |