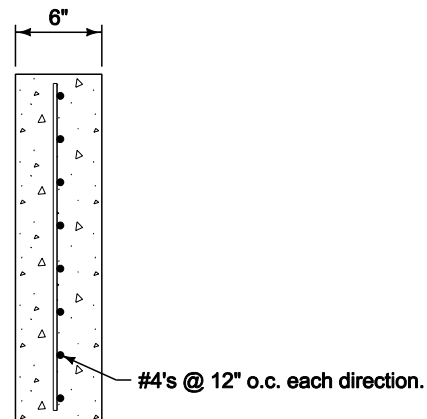
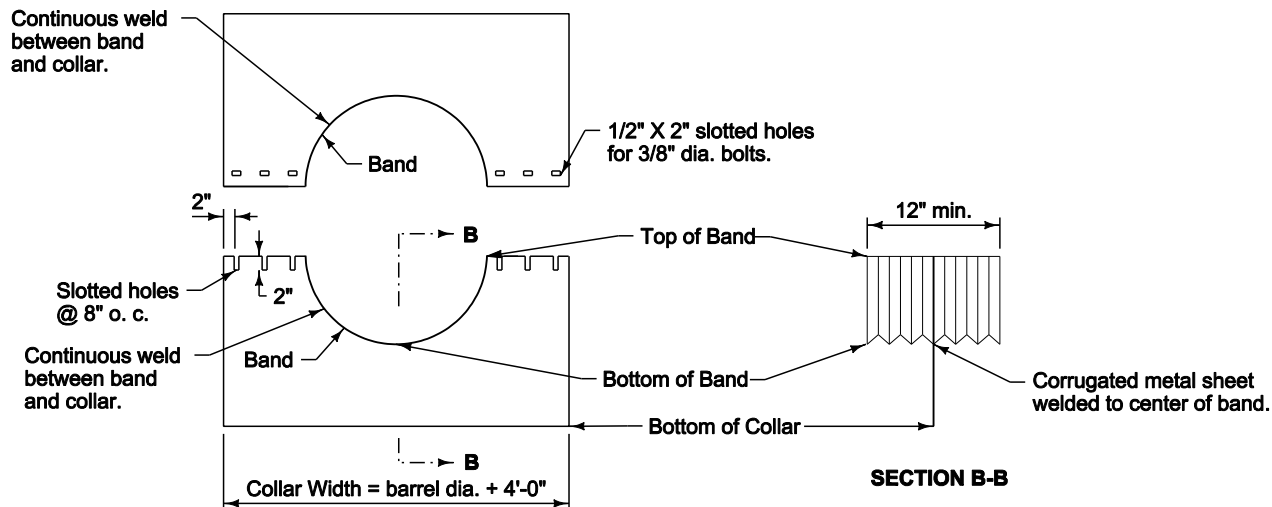


**CONCRETE COLLAR**




**SECTION A-A**

Anti-seep collars are not required unless specified in the contract documents.



**SECTION B-B**

**CMP COLLAR**

	REVISION	
	1	10-18-11
	<b>9040.17</b>	
	SHEET 1 of 1	
SUDAS Standard Specifications		
ANTI-SEEP COLLAR		