

LEGEND

- Crash Cushion
- ➔ Traffic Sign
- × Drum
- 42" Channellizer or Vertical Panel
- ◇ Channellizer Marker
- ◆ Tubular Marker
- Type III Barricade
- ▨ Sequencing Arrow
- Orange Mesh Safety Fence
- Temporary Floodlighting
- ▨ Work Area
- ➔ Direction of Traffic
- ▨ Detour Pavement

Place Two-Way Traffic symbol and DO NOT PASS signs alternately on both sides of the roadway at a maximum of one-half mile intervals for both directions of travel. Always have signs in sight of motorists.

When the Average Daily Traffic (ADT) exceeds 20,000 vehicles per day or when a traffic queue extends beyond the advanced signing, place RIGHT/LEFT LANE CLOSED 4 MILES and RIGHT/LEFT LANE CLOSED 2 MILES signs (W20-5) on both sides of the roadway 4 miles and 2 miles in advance of the lane closure, respectively, as appropriate.

- ① Refer to SI-881 for sign details.
- ② Refer to PM-111 for arrow details.
- ③ Space Speed Limit signs at one-mile intervals.
- ④ Install an additional supplemental plaque with the message NEXT X MILES on the Two-Way Traffic symbol sign assembly on the right side of the roadway to inform motorists of the remaining length of two-lane traffic. Round X to the nearest whole-mile increment.

- ⑤ Temporary Crash Cushion. Refer to BA-500 for approved sand barrel layouts.
- ⑦ For roadways with a posted speed limit of 60 mph or greater before road work: Place SPEED LIMIT AHEAD sign and SPEED LIMIT 55 sign prior to the lane closure as shown. Place SPEED LIMIT 65 or 70 beyond the work area as shown.

Remove or cover all existing signs that conflict with 55 mph speed limit while 55 mph speed limit is in effect.

- Possible Contract Items:**
- Painted Symbols and Legends
 - Pavement Marking Items
 - Pavement Marking Removed
 - Safety Closures
 - Temporary Barrier Rail
 - Temporary Crash Cushions
 - Temporary Floodlighting
 - Traffic Control

- Possible Tabulations:**
- 108-13A, 108-22, 108-27, 108-29, 108-30, 108-33

Iowa Department of Transportation

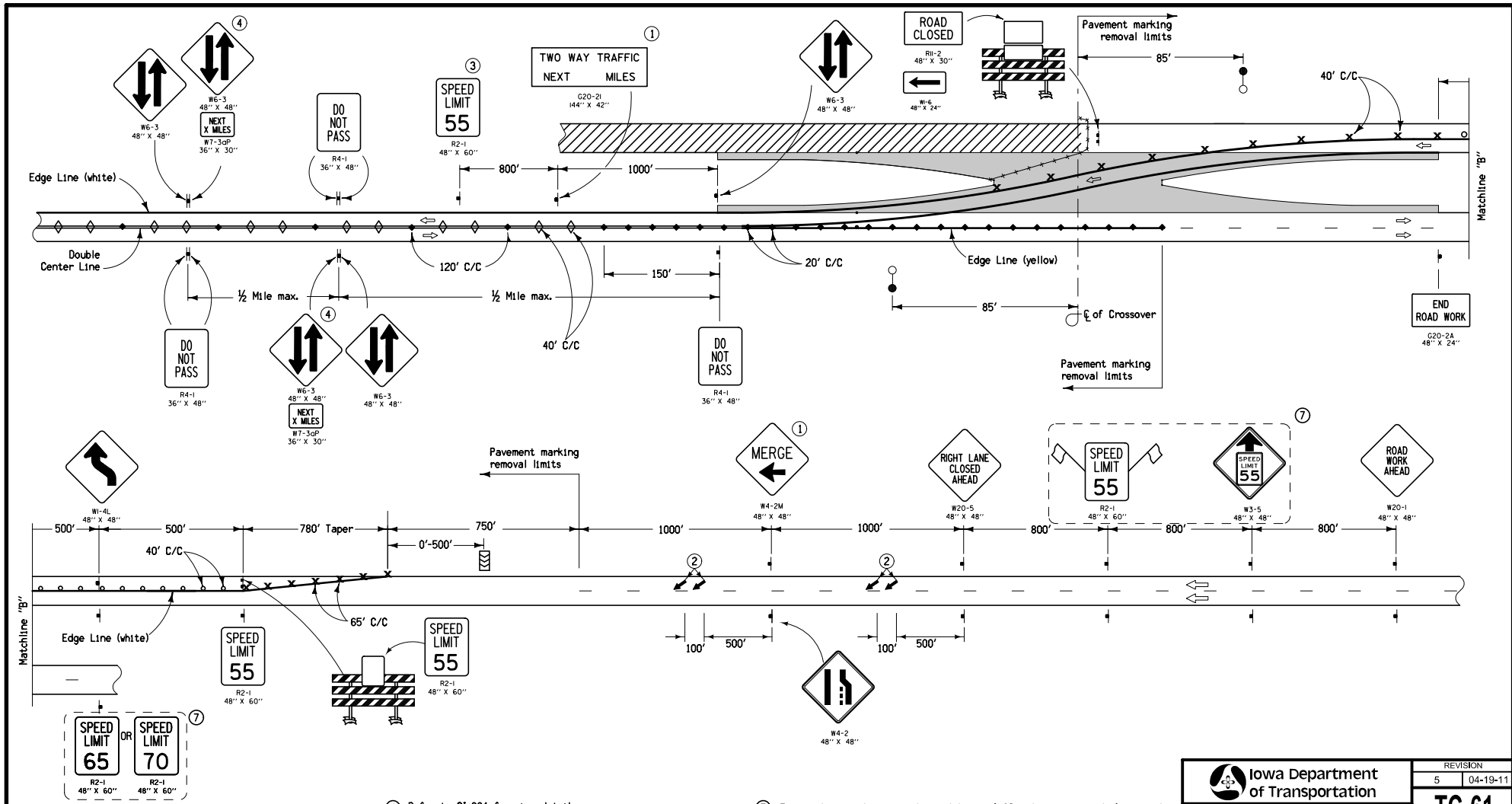
STANDARD ROAD PLAN

REVISIONS: Changed ramp entry from stop condition to yield condition. Replaced Raised Pavement Markings with Wet Retroreflective Tape. Added TLSS placement.

Deanna Macfield
APPROVED BY DESIGN METHODS ENGINEER

REVISION	5	04-19-11
TC-61		
SHEET 1 of 4		

TWO-LANE, TWO-WAY OPERATION



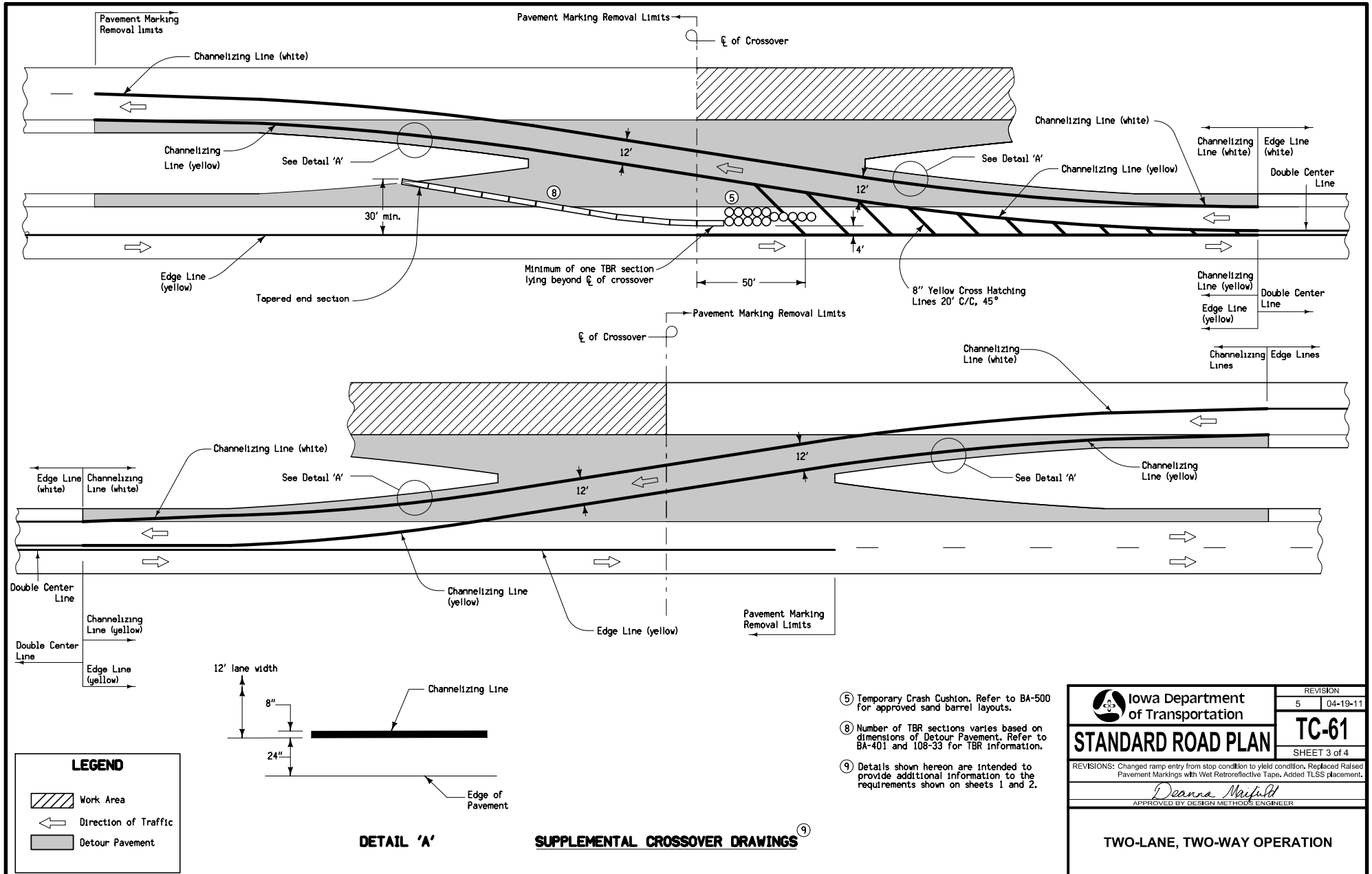
LEGEND

○	Crash Cushion	▤	Sequencing Arrow
—	Traffic Sign	—	Orange Mesh Safety Fence
×	Drum	○	Temporary Floodlighting
○	42" Channelizer or Vertical Panel	▨	Work Area
◇	Channelizer Marker	←	Direction of Traffic
◆	Tubular Marker	▨	Detour Pavement
---	Type III Barricade		

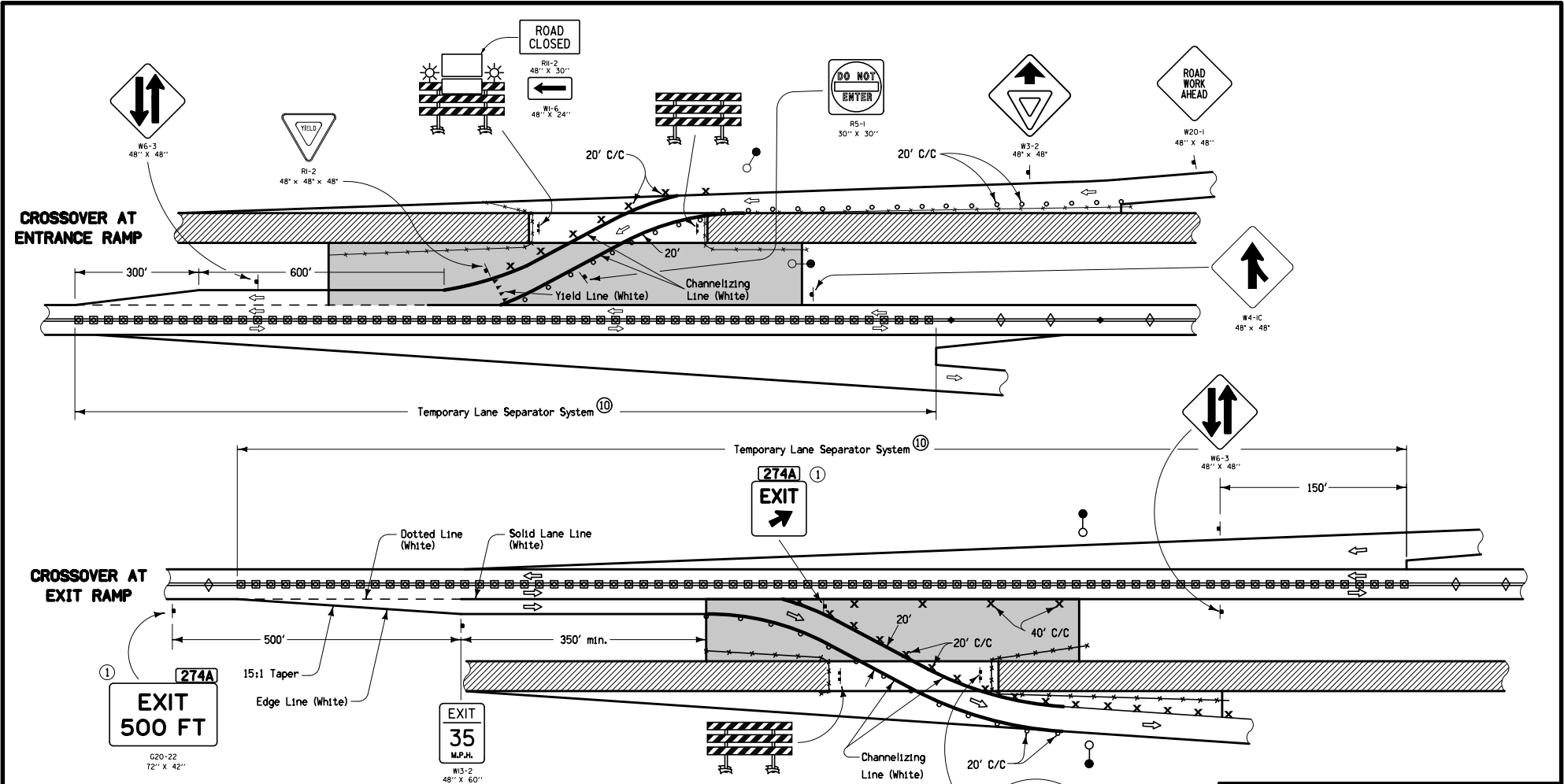
- ① Refer to SI-881 for sign details.
- ② Refer to PM-111 for arrow details.
- ③ Space Speed Limit signs at one-mile intervals.
- ④ Install an additional supplemental plaque with the message NEXT X MILES on the Two-Way Traffic symbol sign assembly on the right side of the roadway to inform motorists of the remaining length of two-lane traffic. Round X to the nearest whole-mile increment.

- ⑦ For roadways with a posted speed limit of 60 mph or greater before road work:
Place SPEED LIMIT AHEAD sign and SPEED LIMIT 55 sign prior to the lane closure as shown. Place SPEED LIMIT 65 or 70 beyond the work area as shown.
Remove or cover all existing signs that conflict with 55 mph speed limit while 55 mph speed limit is in effect.

 Iowa Department of Transportation	REVISION 5 04-19-11
	STANDARD ROAD PLAN
	TC-61
SHEET 2 of 4	
REVISIONS: Changed ramp entry from stop condition to yield condition, Replaced Raised Pavement Markings with Wet Retroreflective Tape, Added TLSS placement.	
 APPROVED BY DESIGN METHODS ENGINEER	
TWO-LANE, TWO-WAY OPERATION	

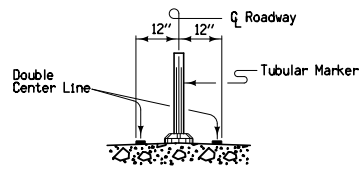


<p>Iowa Department of Transportation</p> <p>STANDARD ROAD PLAN</p> <p>REVISIONS: Changed ramp entry from stop condition to yield condition. Replaced Raised Pavement Markings with Wet Retroreflective Tape. Added TLSS placement.</p> <p><i>Deanna Macfild</i> APPROVED BY DESIGN METHODS ENGINEER</p>	REVISION
	5 04-19-11
	TC-61
SHEET 3 of 4	
TWO-LANE, TWO-WAY OPERATION	



LEGEND

↑ Traffic Sign	☀ Type 'A' Warning Light
× Drum	⚡ Orange Mesh Safety Fence
○ 42" Channelizer or Vertical Panel	⦿ Temporary Floodlighting
◇ Channelizer Marker	▨ Work Area
◆ Tubular Marker	▭ Detour Pavement
⚡ Type III Barricade	↔ Direction of Traffic
⊠ Temporary Lane Separator	



PLACEMENT OF DOUBLE YELLOW CENTERLINE

- ① Refer to SI-881 for sign details.
- ⑩ Place TLSS from start of ramp gore or start of full width decel lane to end of temporary ramp crossover pavement or end of ramp gore.

<p>Iowa Department of Transportation</p> <p>STANDARD ROAD PLAN</p> <p>REVISIONS: Changed ramp entry from stop condition to yield condition. Replaced Raised Pavement Markings with Wet Retroreflective Tape. Added TLSS placement.</p> <p style="text-align: right;"><i>Deanna Macfild</i> APPROVED BY DESIGN METHODS ENGINEER</p>	REVISION 5 04-19-11
	TC-61
	SHEET 4 of 4
TWO-LANE, TWO-WAY OPERATION	