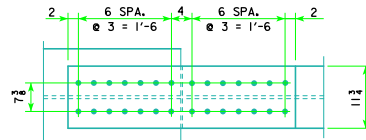
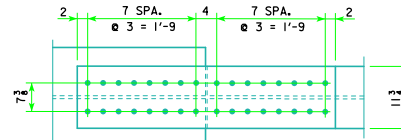


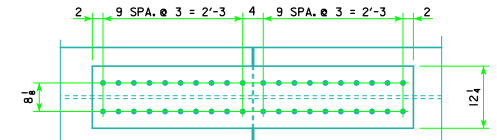
TOP AND BOTTOM FLANGE



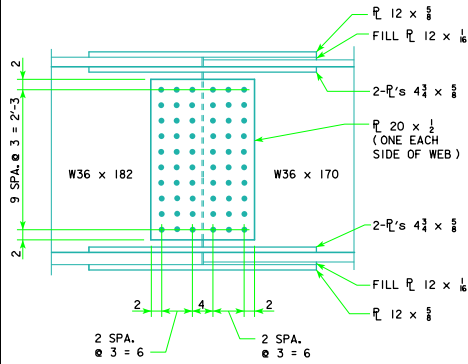
TOP AND BOTTOM FLANGE



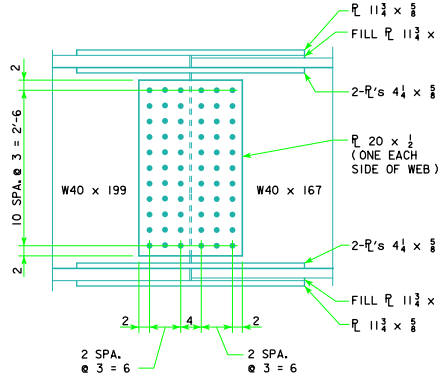
TOP AND BOTTOM FLANGE



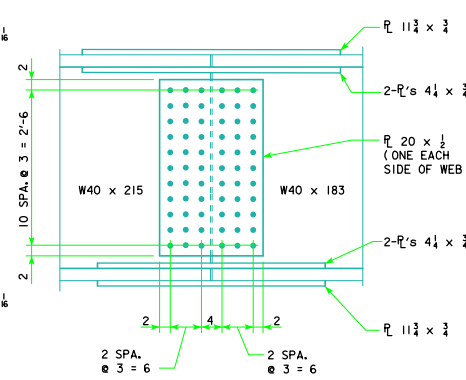
TOP AND BOTTOM FLANGE



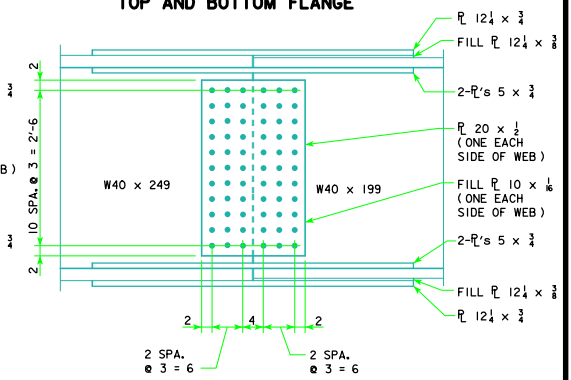
BOLTED SPLICE DETAILS



BOLTED SPLICE DETAILS



BOLTED SPLICE DETAILS



BOLTED SPLICE DETAILS

240' BEAM SPLICE

NOTE: ALL BOLTS 3/4"

STRUCTURAL STEEL
ONE SPLICE
658 (LBS.)

260' BEAM SPLICE

NOTE: ALL BOLTS 3/4"

STRUCTURAL STEEL
ONE SPLICE
659 (LBS.)

280' BEAM SPLICE

NOTE: ALL BOLTS 3/4"

STRUCTURAL STEEL
ONE SPLICE
781 (LBS.)

300' BEAM SPLICE

NOTE: ALL BOLTS 3/4"

STRUCTURAL STEEL
ONE SPLICE
1,054 (LBS.)

NOTE: STRUCTURAL STEEL WEIGHT INCLUDES WEIGHT OF SPLICE PLATES, FILL PLATES, BOLTS, NUTS AND WASHERS.

NOTE: STRUCTURAL STEEL WEIGHT IS INCLUDED ON THE SUMMARY QUANTITIES SHEET.

LATEST REVISION DATE <i>Norman E. Mc Donald</i> APPROVED BY BRIDGE ENGINEER	
	STANDARD DESIGN - 40' ROADWAY, 3 SPAN BRIDGES ROLLED STEEL BEAM BRIDGES OCTOBER, 2014
	BOLTED FIELD SPLICE DETAILS SHEET 2
RS40-085-14	