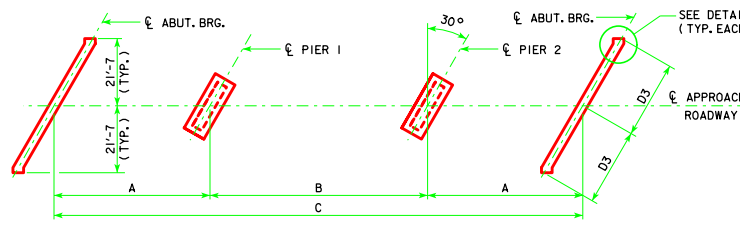
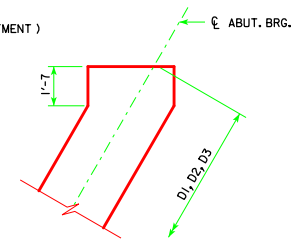


30° SKEW (R.A.)

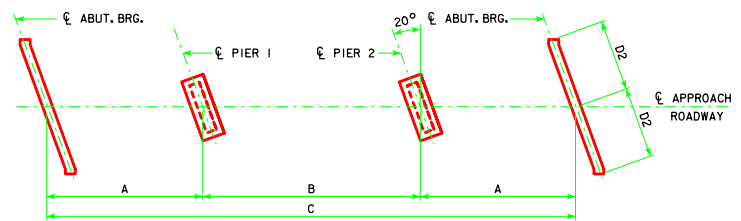


30° SKEW (L.A.)

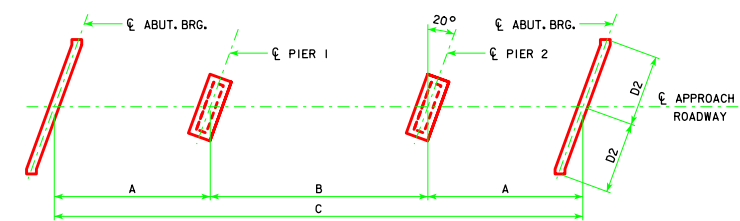


DETAIL A

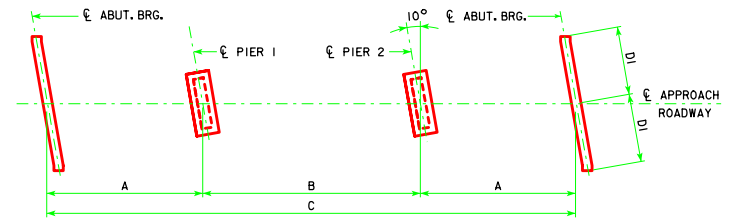
DIMENSION D1, D2, D3 APPLIES AT LOCATION SHOWN ALONG THE ABUTMENT BEARING (TYP.)



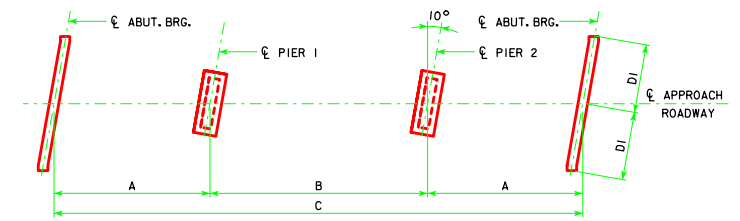
20° SKEW (R.A.)



20° SKEW (L.A.)

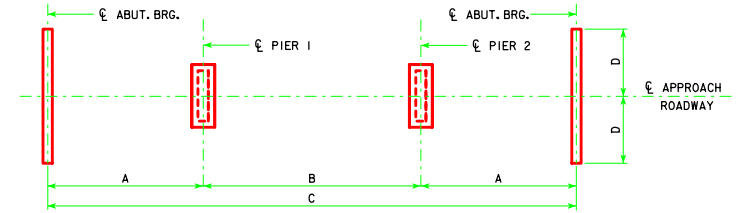


10° SKEW (R.A.)



10° SKEW (L.A.)

- NOTES:
 1. ALL SUBSTRUCTURE UNITS ARE CONSTRUCTED PARALLEL TO THE SKEW INDICATED FOR EACH BRIDGE.
 2. R.A. = RIGHT AHEAD
 L.A. = LEFT AHEAD



0° SKEW

LENGTH	BEAM BRIDGE STANDARDS			0° SKEW			
	A	B	C	D	D1	D2	D3
160'-0"	48'-0"	64'-0"	160'-0"	21'-7"	21'-11"	22'-11"	24'-11" ₁₆
180'-0"	54'-0"	72'-0"	180'-0"	21'-7"	21'-11"	22'-11"	24'-11" ₁₆
200'-0"	60'-0"	80'-0"	200'-0"	21'-7"	21'-11"	22'-11"	24'-11" ₁₆
220'-0"	66'-0"	88'-0"	220'-0"	21'-7"	21'-11"	22'-11"	24'-11" ₁₆
240'-0"	72'-0"	96'-0"	240'-0"	21'-7"	21'-11"	22'-11"	24'-11" ₁₆
260'-0"	78'-0"	104'-0"	260'-0"	21'-7"	21'-11"	22'-11"	24'-11" ₁₆
280'-0"	84'-0"	112'-0"	280'-0"	21'-7"	21'-11"	22'-11"	24'-11" ₁₆
300'-0"	90'-0"	120'-0"	300'-0"	21'-7"	21'-11"	22'-11"	24'-11" ₁₆
320'-0"	96'-0"	128'-0"	320'-0"	21'-7"	21'-11"	22'-11"	24'-11" ₁₆

LATEST REVISION DATE
 Approved by
 BRIDGE ENGINEER

IOWADOT Highway Division
 STANDARD DESIGN - 40' ROADWAY, 3 SPAN BRIDGES
ROLLED STEEL BEAM BRIDGES
 OCTOBER, 2014

SUBSTRUCTURE LAYOUTS RS40-004-14