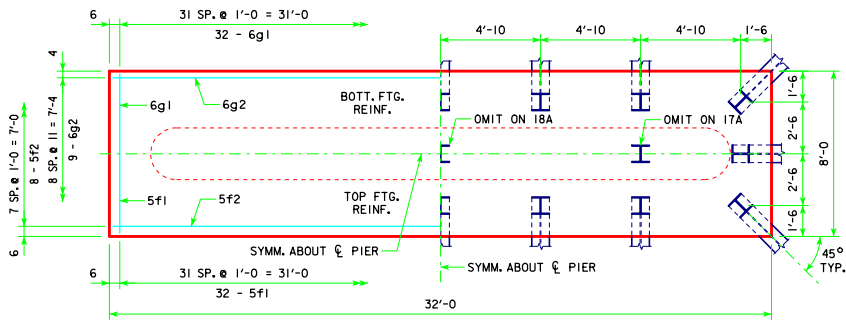
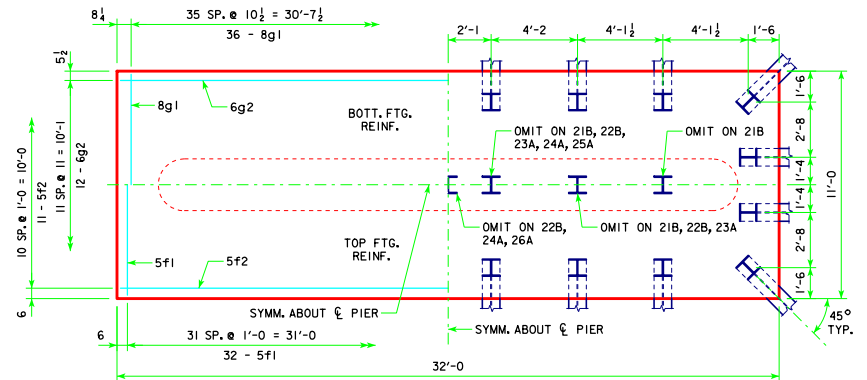


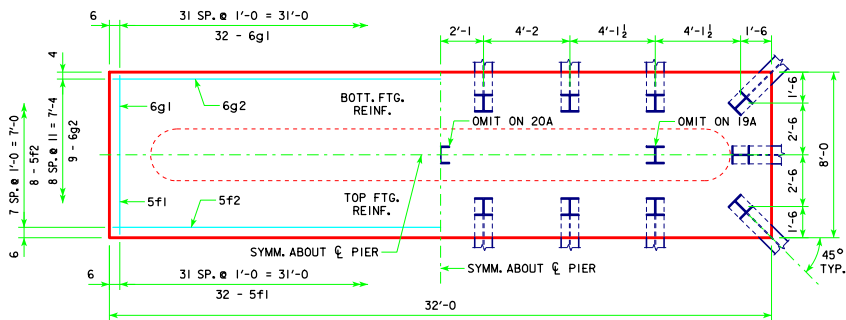
REVISED 05-13 - REVISION FOR LRFD PILE DESIGN.



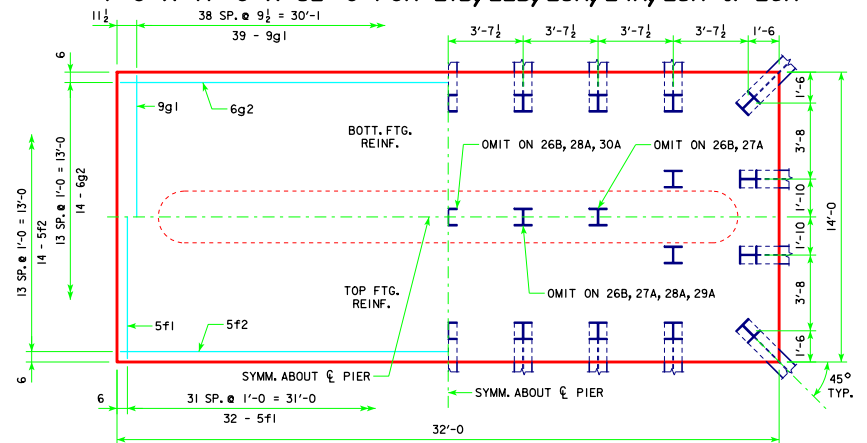
**4'-0" x 8'-0" x 32'-0" FOR 17A & 18A**



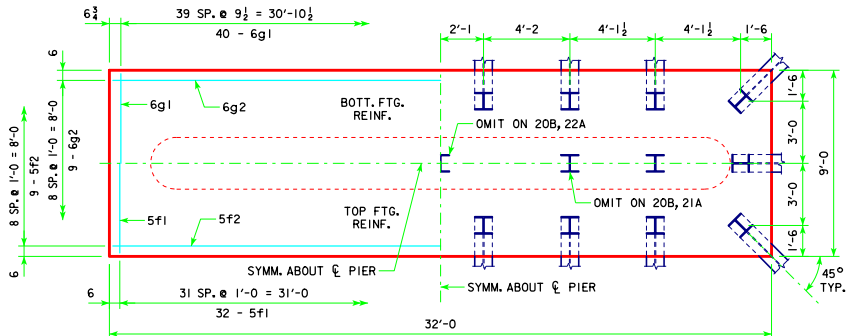
**4'-0" x 11'-0" x 32'-0" FOR 21B, 22B, 23A, 24A, 25A & 26A**



**4'-0" x 8'-0" x 32'-0" FOR 19A & 20A**



**4'-0" x 14'-0" x 32'-0" FOR 26B, 27A, 28A, 29A, 30A & 31A**



**4'-0" x 9'-0" x 32'-0" FOR 20B, 21A & 22A**

NOTE:  
SEE SHEET RS40-158-10 FOR FOOTING NOTES.

05-13 LATEST REVISION DATE  <i>Thomas E. McQuinn</i> APPROVED BY BRIDGE ENGINEER	<p><b>Iowa Department of Transportation</b> Highway Division</p>
	STANDARD DESIGN - 40' ROADWAY, 3 SPAN BRIDGES <b>ROLLED STEEL BEAM BRIDGES</b> JUNE, 2010
<b>TEE PIER-HPI0x57 SRL-1</b> <b>STEEL PILE FOOTINGS</b> 45° SKEW - SHEET 2	
<b>RS40-159-10</b>	