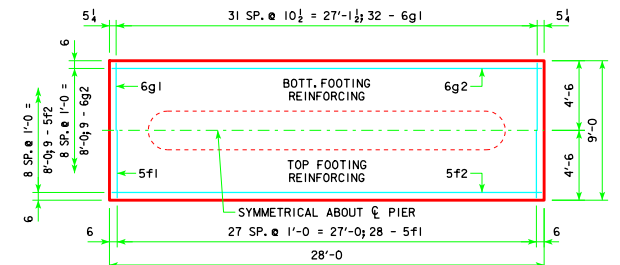
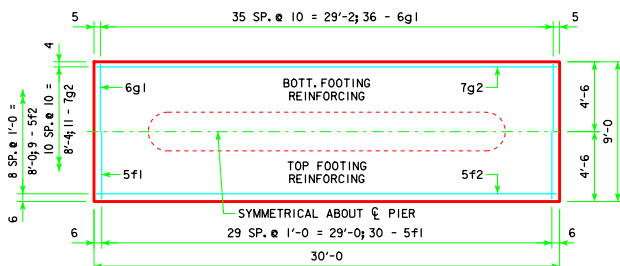


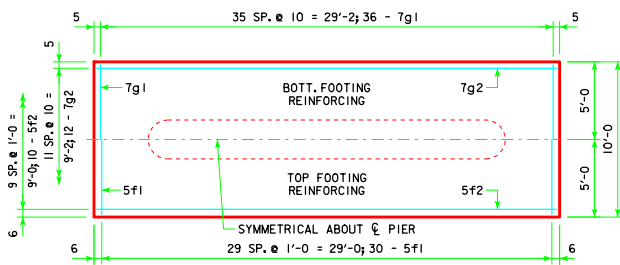
4'-0 x 8'-0 x 28'-0



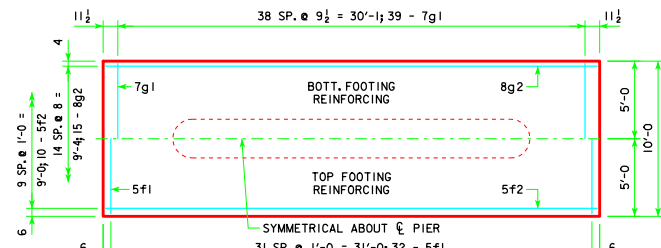
4'-0 x 9'-0 x 28'-0



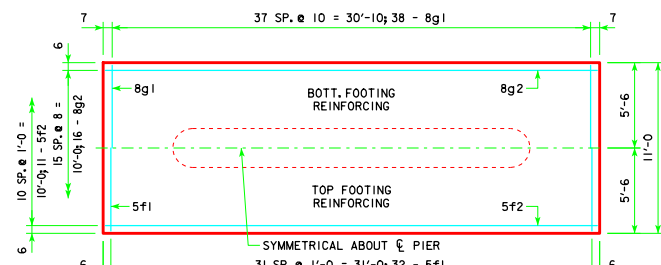
4'-0 x 9'-0 x 30'-0



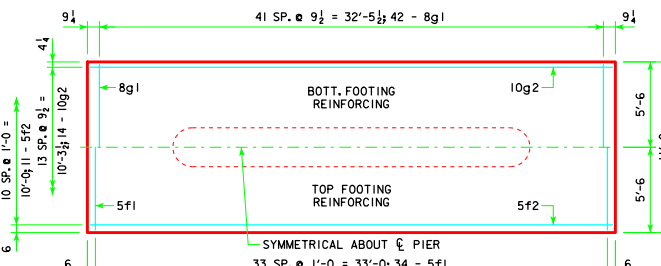
4'-0 x 10'-0 x 30'-0



4'-0 x 10'-0 x 32'-0



4'-0 x 11'-0 x 32'-0



4'-0 x 11'-0 x 34'-0

NOTE:
SEE SHEET RS40-154-14 FOR FOOTING NOTES.

LATEST REVISION DATE <i>Thomas E. McQuinn</i> APPROVED BY BRIDGE ENGINEER	
	STANDARD DESIGN - 40' ROADWAY, 3 SPAN BRIDGES ROLLED STEEL BEAM BRIDGES OCTOBER, 2014
	TEE PIER - SPREAD FOOTINGS 30° SKEW - SHEET 2

RS40-155-14