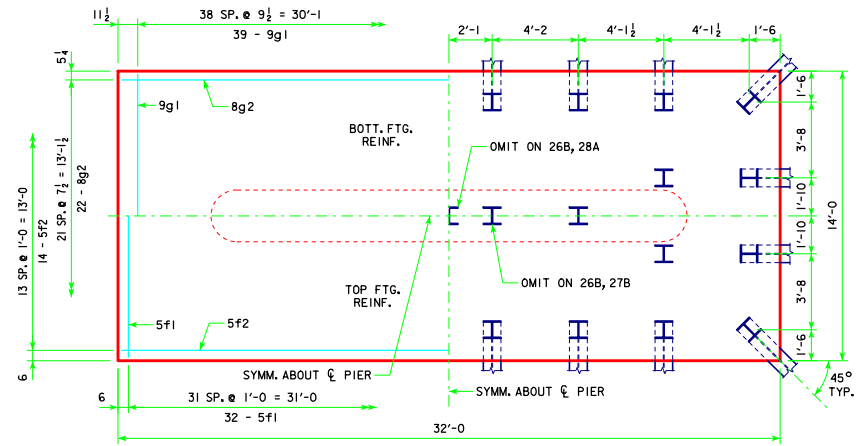
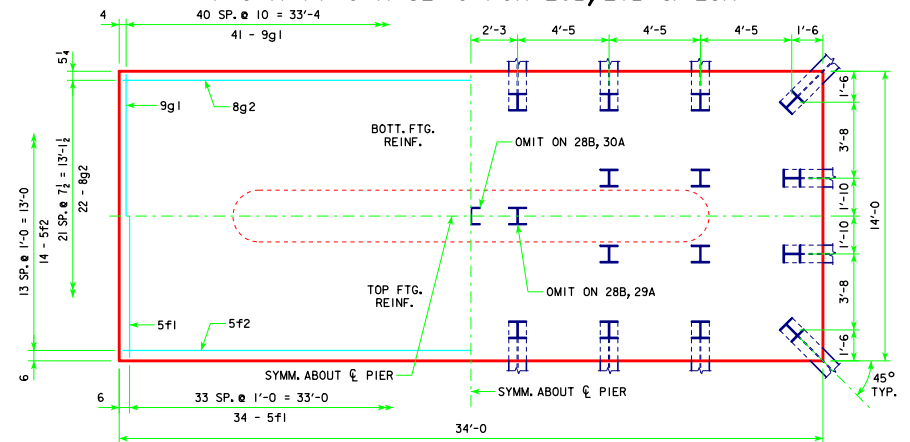


4'-0 x 14'-0 x 30'-0 FOR 26A & 27A



4'-0 x 14'-0 x 32'-0 FOR 26B, 27B & 28A



4'-0 x 14'-0 x 34'-0 FOR 28B, 29A & 30A

NOTE:
SEE SHEET RS40-148-14 FOR FOOTING NOTES.

LATEST REVISION DATE	 APPROVED BY BRIDGE ENGINEER	 STANDARD DESIGN - 40' ROADWAY, 3 SPAN BRIDGES ROLLED STEEL BEAM BRIDGES OCTOBER, 2014
		TEE PIER-HP10x57 SRL-1 STEEL PILE FOOTINGS <small>30° SKEW - SHEET 3</small>
		RS40-150-14