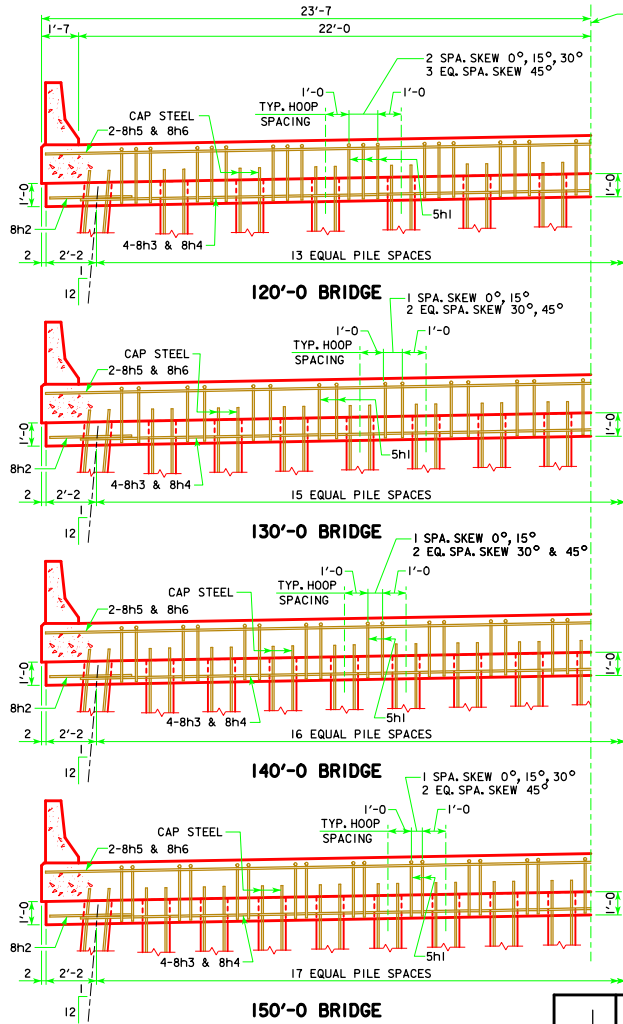
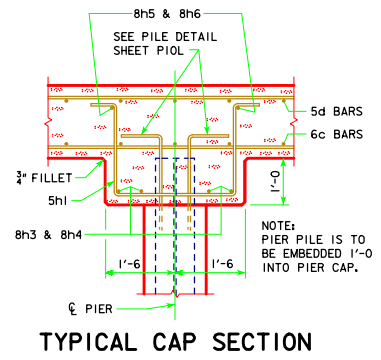


SYMMETRICAL ABOUT
CL ROADWAY



SYMMETRICAL ABOUT
CL ROADWAY

HALF SECTION NEAR PIER
SHOWING STIRRUP SPACING AND NUMBER OF PILING
NOTE: BOTTOM OF CAP ELEVATIONS WILL BE REQUIRED AT THE
CL OF ROADWAY AND AT EACH EXTERIOR PILE.



LATEST REVISION DATE <i>Thomas E. M. Small</i> APPROVED BY BRIDGE ENGINEER	
	STANDARD DESIGN - 44' ROADWAY, 3 SPAN BRIDGES CONTINUOUS CONCRETE SLAB BRIDGES JULY, 2014
	MONOLITHIC PIER CAP DETAILS ALL BRIDGES

J44-26-14