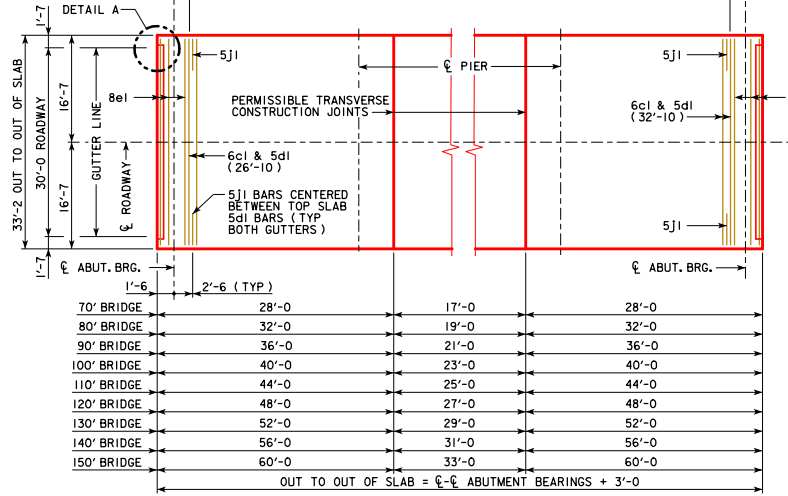


REVISED 07-2009; CHANGED THE DRAIN ANGLES DETAILS ON SECTION A-A. REVISED 09-2020; UPDATED BRIDGE ENGINEER SIGNATURE. CHANGED PAVING BLOCK LIFTING HOOP BAR MARK (WAS 5X1).

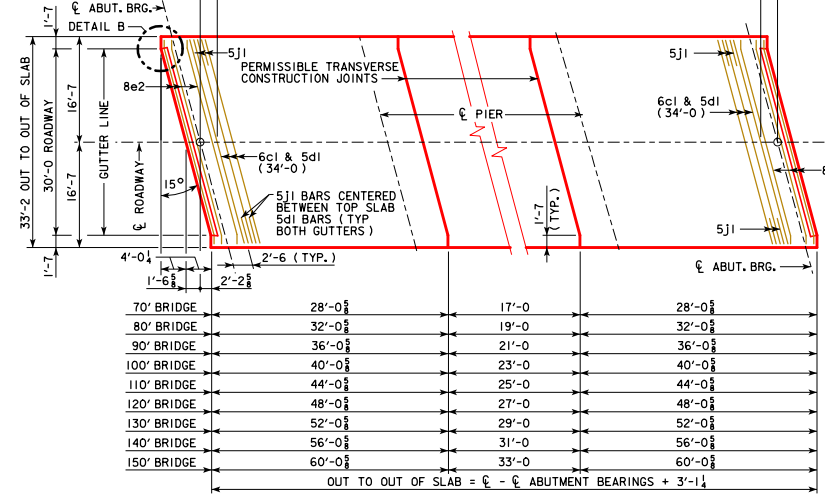
70' BRIDGE	2'-0"	66 SPA. @ 1'-0" = 66'-0" ; 67-6cl (BOTTOM SLAB) & 67-5dl (TOP SLAB)	2'-0"
80' BRIDGE	2'-0"	76 SPA. @ 1'-0" = 76'-0" ; 77-6cl (BOTTOM SLAB) & 77-5dl (TOP SLAB)	2'-0"
90' BRIDGE	2'-0"	86 SPA. @ 1'-0" = 86'-0" ; 87-6cl (BOTTOM SLAB) & 87-5dl (TOP SLAB)	2'-0"
100' BRIDGE	2'-0"	96 SPA. @ 1'-0" = 96'-0" ; 97-6cl (BOTTOM SLAB) & 97-5dl (TOP SLAB)	2'-0"
110' BRIDGE	2'-0"	106 SPA. @ 1'-0" = 106'-0" ; 107-6cl (BOTTOM SLAB) & 107-5dl (TOP SLAB)	2'-0"
120' BRIDGE	2'-0"	116 SPA. @ 1'-0" = 116'-0" ; 117-6cl (BOTTOM SLAB) & 117-5dl (TOP SLAB)	2'-0"
130' BRIDGE	2'-0"	126 SPA. @ 1'-0" = 126'-0" ; 127-6cl (BOTTOM SLAB) & 127-5dl (TOP SLAB)	2'-0"
140' BRIDGE	2'-0"	136 SPA. @ 1'-0" = 136'-0" ; 137-6cl (BOTTOM SLAB) & 137-5dl (TOP SLAB)	2'-0"
150' BRIDGE	2'-0"	146 SPA. @ 1'-0" = 146'-0" ; 147-6cl (BOTTOM SLAB) & 147-5dl (TOP SLAB)	2'-0"



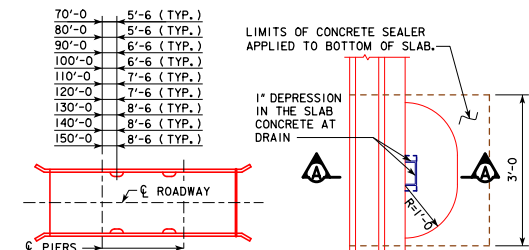
0° SKEW

TRANSVERSE REINFORCING STEEL LAYOUT

70' BRIDGE	2'-0"	66 SPA. @ 1'-0" = 66'-0" ; 67-6cl (BOTTOM SLAB) & 67-5dl (TOP SLAB)	2'-0"
80' BRIDGE	2'-0"	76 SPA. @ 1'-0" = 76'-0" ; 77-6cl (BOTTOM SLAB) & 77-5dl (TOP SLAB)	2'-0"
90' BRIDGE	2'-0"	86 SPA. @ 1'-0" = 86'-0" ; 87-6cl (BOTTOM SLAB) & 87-5dl (TOP SLAB)	2'-0"
100' BRIDGE	2'-0"	96 SPA. @ 1'-0" = 96'-0" ; 97-6cl (BOTTOM SLAB) & 97-5dl (TOP SLAB)	2'-0"
110' BRIDGE	2'-0"	106 SPA. @ 1'-0" = 106'-0" ; 107-6cl (BOTTOM SLAB) & 107-5dl (TOP SLAB)	2'-0"
120' BRIDGE	2'-0"	116 SPA. @ 1'-0" = 116'-0" ; 117-6cl (BOTTOM SLAB) & 117-5dl (TOP SLAB)	2'-0"
130' BRIDGE	2'-0"	126 SPA. @ 1'-0" = 126'-0" ; 127-6cl (BOTTOM SLAB) & 127-5dl (TOP SLAB)	2'-0"
140' BRIDGE	2'-0"	136 SPA. @ 1'-0" = 136'-0" ; 137-6cl (BOTTOM SLAB) & 137-5dl (TOP SLAB)	2'-0"
150' BRIDGE	2'-0"	146 SPA. @ 1'-0" = 146'-0" ; 147-6cl (BOTTOM SLAB) & 147-5dl (TOP SLAB)	2'-0"



15° SKEW



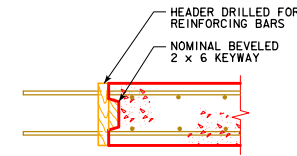
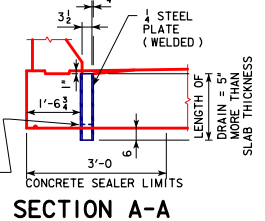
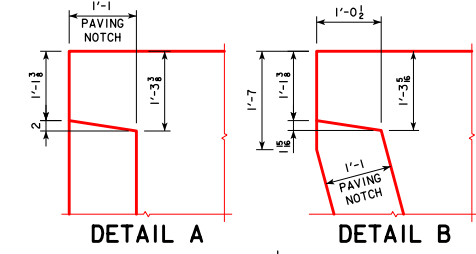
FLOOR DRAIN LOCATION

NOTE: 4" x 8" OUTSIDE DIMENSION ROLLED TUBE WITH 1/2" WALL THICKNESS MAY BE SUBSTITUTED FOR THE WELDED FLOOR SHOWN.

FLOOR DRAIN DETAILS

(USE FOR BARRIER RAIL ONLY, NOT REQUIRED FOR OPEN RAIL)

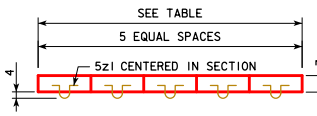
NOTE: DRAINS ARE TO BE GALVANIZED, INCLUDE COST OF DRAINS IN PRICE BID FOR "STRUCTURAL CONCRETE". 4 DRAINS REQUIRED.



TRANSVERSE CONSTRUCTION JOINT

SPAN	WEIGHT, LBS.	SPAN	WEIGHT, LBS.
70'-0"	32	120'-0"	41
80'-0"	33	130'-0"	43
90'-0"	35	140'-0"	45
100'-0"	37	150'-0"	48
110'-0"	39		

SKEW	LENGTH	CONCRETE
0°	28'-0"	0.7 C.Y.
15°	29'-0"	0.7 C.Y.



TEMPORARY PAVING BLOCK DETAIL

NOTE: TEMPORARY PAVING BLOCK TO BE USED WITH PAVED APPROACHES ONLY. LINE NOTCH WITH TAR PAPER BEFORE PLACING TEMPORARY PAVING BLOCK.

09-2020 LATEST REVISION DATE APPROVED BY BRIDGE ENGINEER	
	STANDARD DESIGN - 30' ROADWAY, 3 SPAN BRIDGES CONTINUOUS CONCRETE SLAB BRIDGES NOVEMBER, 2006
	SUPERSTRUCTURE DETAILS ALL BRIDGES
	J30-21-06 0° & 15° SKEW