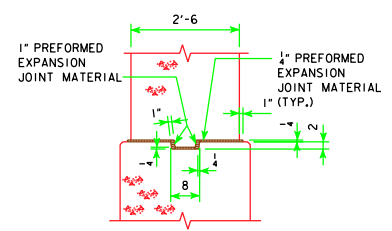


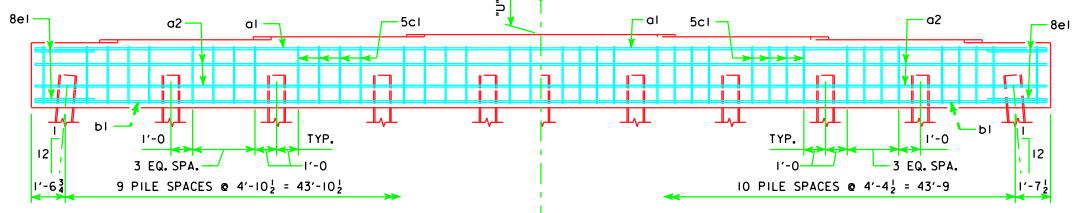
TYPICAL PLAN

SYMMETRICAL ABOUT  $\phi$  PIER EXCEPT STEPS  
GRADE ELEV.  $\phi$  PIER

NOTE:  
THE HEIGHT OF THE STEPS ON THE BRIDGE SEAT IS EQUAL TO THE DIFFERENCE IN ELEVATIONS OF THE TOP OF SLAB AT ADJACENT BEAMS ALONG  $\phi$  PIER.  
SEE SHEET H44-15-07 FOR "U" DIMENSION.

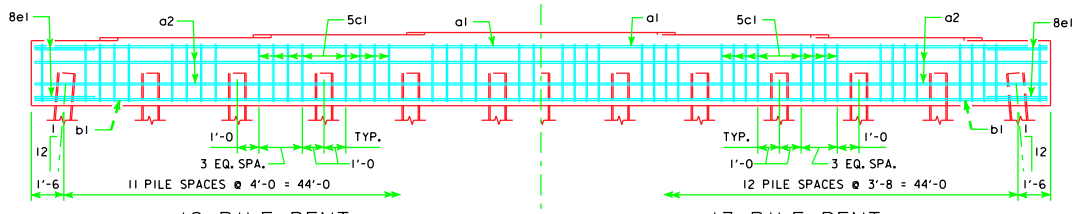


KEYED NOTCH DETAIL



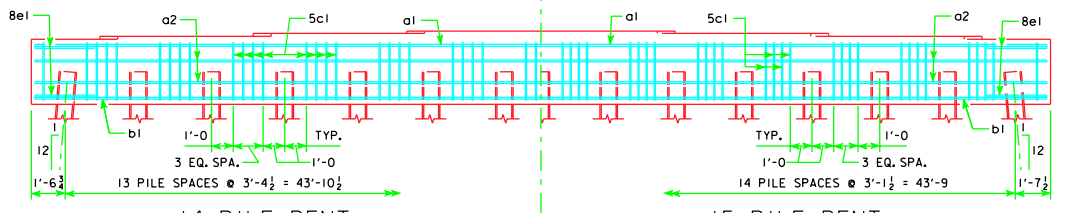
10 PILE BENT

11 PILE BENT



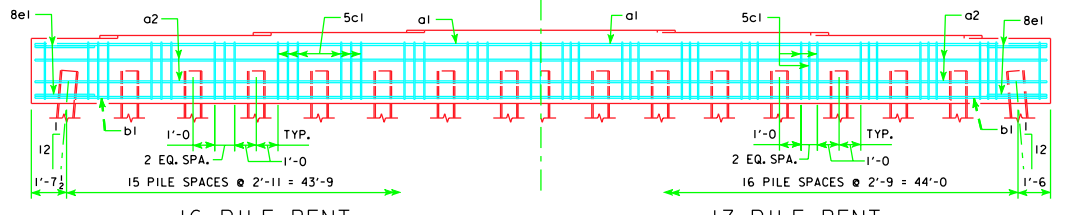
12 PILE BENT

13 PILE BENT



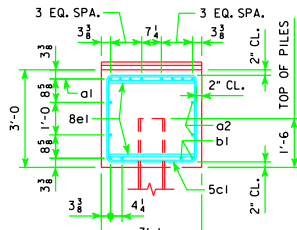
14 PILE BENT

15 PILE BENT

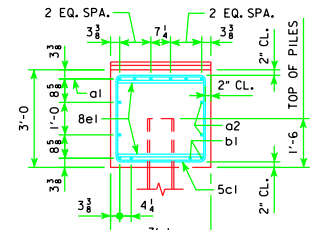


16 PILE BENT

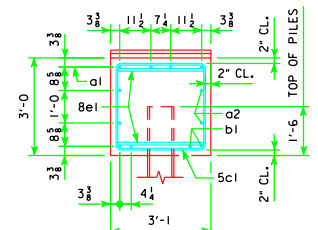
17 PILE BENT



VIEW A-A  
FOR 10 PILE BENT



VIEW A-A  
FOR 11, 12, 13, 14, 15 & 16 PILE BENTS



VIEW A-A  
FOR 17 PILE BENT

REVISED 11-09 - SHEET WAS REVISED TO MEET LRFD SPECIFICATIONS.

11-09 LATEST REVISION DATE  <i>Thomas C. McQuinn</i> APPROVED BY BRIDGE ENGINEER	
	STANDARD DESIGN - 44' ROADWAY, THREE SPAN BRIDGE <b>PRETENSIONED PRESTRESSED          CONCRETE BEAM BRIDGES</b> MARCH, 2007
<b>PILE BENT PIERS</b> 15° SKEW	<b>H44-42-07</b>