

TYPICAL SECTION

NOTE: THE REINFORCING STEEL QUANTITY IS TO BE INCLUDED ON THE SUMMARY QUANTITIES SHEET IN THE PLAN.

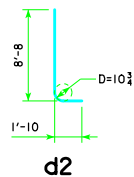
NOTE: THE CONCRETE QUANTITY IS TO BE INCLUDED ON THE SUMMARY QUANTITIES SHEET IN THE PLAN.

NOTE: THE PILE TYPE IS TO BE INCLUDED ON THE SUMMARY QUANTITIES SHEET IN THE PLAN.

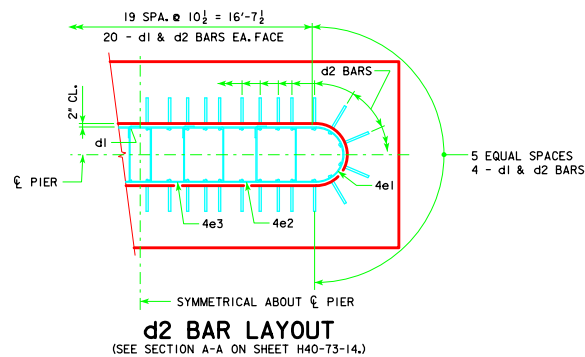
| H IN FT. | CL. - C. ABUT. BRG. | PILING (HP10x57) |  | FOOTING SIZE   |
|----------|---------------------|------------------|--|----------------|
|          |                     | NO. & LAYOUT     | ① LRFD PU, STRENGTH I DES. LOAD (KIPS) |                |
| 20 TO 27 | 201'-4              | 15C              | 205                                    | 4' x 9' x 26'  |
|          | 213'-10             | 15C              | 212                                    |                |
|          | 226'-4              | 16C              | 207                                    |                |
|          | 243'-0              | 16C              | 215                                    |                |
| 28 TO 35 | 201'-4              | 15C              | 210                                    | 4' x 9' x 26'  |
|          | 213'-10             | 15C              | 217                                    |                |
|          | 226'-4              | 16C              | 212                                    |                |
|          | 243'-0              | 16C              | 219                                    |                |
| 31 TO 33 | 201'-4              | 15C              | 214                                    | 4' x 9' x 26'  |
|          | 213'-10             | 16C              | 207                                    |                |
|          | 226'-4              | 16C              | 215                                    |                |
|          | 243'-0              | 17A              | 215                                    |                |
| 36 TO 38 | 201'-4              | 15D              | 213                                    | 4' x 10' x 27' |
|          | 213'-10             | 16D              | 207                                    |                |
|          | 226'-4              | 16D              | 215                                    |                |
|          | 243'-0              | 17B              | 214                                    |                |
| 37 TO 40 | 201'-4              | 15D              | 218                                    | 4' x 10' x 27' |
|          | 213'-10             | 16D              | 211                                    |                |
|          | 226'-4              | 16D              | 219                                    |                |
|          | 243'-0              | 17B              | 219                                    |                |

① NOTE: PU, STRENGTH I DESIGN LOAD (KIPS) IS NOT THE VALUE USED IN THE FIELD FOR DRIVING PILES.

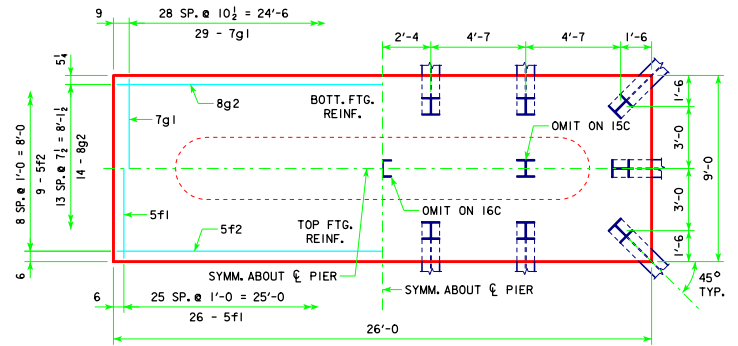
| FOOTING SIZE   | REINFORCING STEEL (ONE FOOTING) |        |              |                    | STRUCTURAL CONCRETE (CY) |
|----------------|---------------------------------|--------|--------------|--------------------|--------------------------|
|                | BAR NO., SIZE & SPACING         | LENGTH | WEIGHT (LB.) | TOTAL WEIGHT (LB.) |                          |
| 4' x 9' x 26'  | d2 48 - #10 AS SHOWN            | 10'-6  | 2169         | 4118               | 34.7                     |
|                | f1 26 - #5 @ 1'-0               | 8'-8   | 235          |                    |                          |
|                | f2 9 - #5 @ 1'-0                | 25'-8  | 241          |                    |                          |
|                | g1 29 - #7 @ 0'-10 1/2          | 8'-8   | 514          |                    |                          |
|                | g2 14 - #8 @ 0'-7 1/2           | 25'-8  | 959          |                    |                          |
|                | d2 48 - #10 AS SHOWN            | 10'-6  | 2169         |                    |                          |
| 4' x 10' x 27' | f1 27 - #5 @ 1'-0               | 9'-8   | 272          | 4672               | 40.0                     |
|                | f2 10 - #5 @ 1'-0               | 26'-8  | 278          |                    |                          |
|                | g1 30 - #8 @ 0'-10 1/2          | 9'-8   | 774          |                    |                          |
|                | g2 13 - #9 @ 0'-9 1/2           | 26'-8  | 1179         |                    |                          |



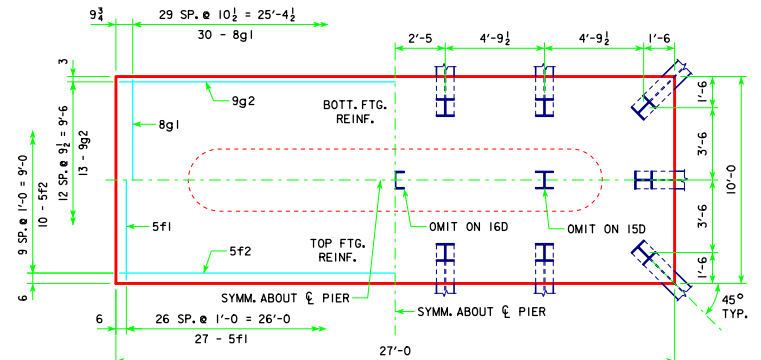
NOTE: D = PIN DIAMETER. DIMENSIONS ARE OUT TO OUT.



d2 BAR LAYOUT (SEE SECTION A-A ON SHEET H40-73-14.)



4'-0 x 9'-0 x 26'-0 FOR 15C, 16C & 17A



4'-0 x 10'-0 x 27'-0 FOR 15D, 16D & 17B

FOOTING NOTES:

THESE FOOTINGS ARE DESIGNED AND DETAILED TO BE USED WITH THE CAP AND COLUMN DETAILS OF THE TEE PIERS AS SHOWN ON SHEET H40-73-14.

BATTER PILES IN EXTERIOR ROWS 1:4 IN THE DIRECTION SHOWN.

STEEL PILING USED AS POINT BEARING SHALL HAVE A MINIMUM DISTANCE OF APPROXIMATELY 10 FEET FROM BOTTOM OF FOOTING TO TOP OF BEARING ROCK. THE PILE LAYOUTS ARE SUCH THAT THE DISTANCE CENTER TO CENTER OF ADJACENT PILING SHALL NOT EXCEED 8'-0.

PIER PILES SHALL BE DRIVEN TO VALUES SHOWN IN DESIGN PLANS.

|                      |                                 |  |                  |
|----------------------|---------------------------------|--|------------------|
| LATEST REVISION DATE | <br>APPROVED BY BRIDGE ENGINEER | <br>STANDARD DESIGN - 40' ROADWAY, THREE SPAN BRIDGE<br><b>PRETENSIONED PRESTRESSED CONCRETE BEAM BRIDGES</b><br>SEPTEMBER, 2014 | <b>H40-78-14</b> |
|                      |                                 | <b>TEE PIER-HP10x57 SRL-2</b><br><b>STEEL PILE FOOTINGS</b>  |                  |
|                      |                                 | 30° SKEW - H=25' TO 40'  |                  |