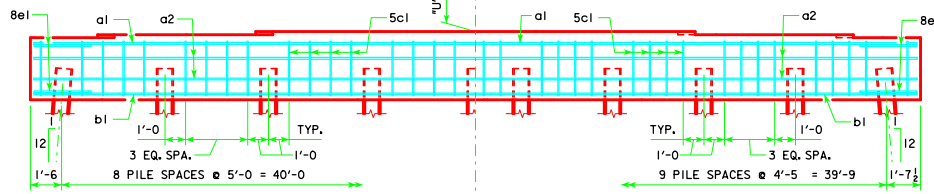


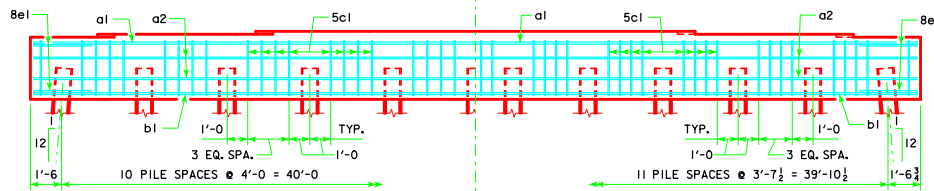
TYPICAL PLAN

SYMMETRICAL ABOUT  $\phi$  PIER EXCEPT STEPS  
GRADE ELEV.  $\phi$   $\phi$  PIER



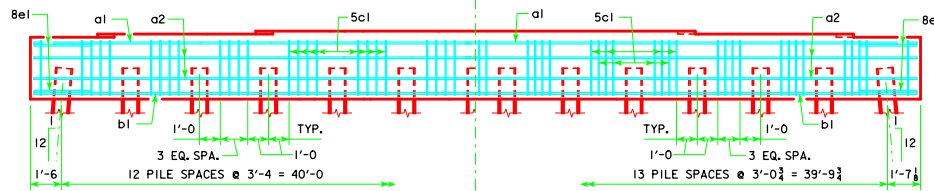
9 PILE BENT

10 PILE BENT



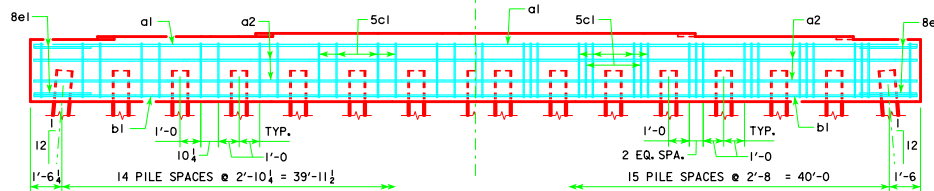
11 PILE BENT

12 PILE BENT



13 PILE BENT

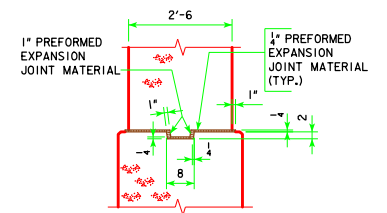
14 PILE BENT



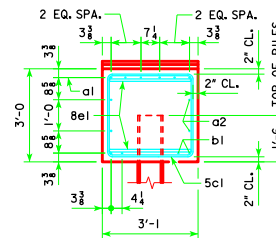
15 PILE BENT

16 PILE BENT

NOTE:  
THE HEIGHT OF THE STEPS ON THE BRIDGE SEAT IS EQUAL TO THE DIFFERENCE IN ELEVATIONS OF THE TOP OF SLAB AT ADJACENT BEAMS ALONG  $\phi$  PIER. SEE SHEET H40-15-14 FOR "U" DIMENSION.

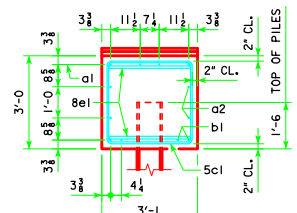


KEYED NOTCH DETAIL



VIEW A-A

FOR 9, 10, 11, 12, 13 & 14 PILE BENTS



VIEW A-A

FOR 15 & 16 PILE BENTS

LATEST REVISION DATE	<i>Thomas E. Mc Donnell</i> APPROVED BY BRIDGE ENGINEER		
		STANDARD DESIGN - 40' ROADWAY, THREE SPAN BRIDGE <b>PRETENSIONED PRESTRESSED CONCRETE BEAM BRIDGES</b> SEPTEMBER, 2014	
		<b>PILE BENT PIERS</b>	<b>H40-48-14</b>
15° SKEW			