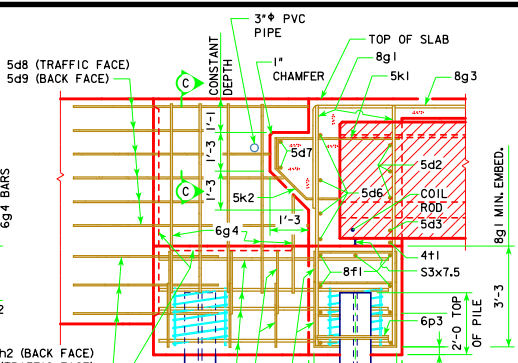


PART REAR ELEVATION AT ABUTMENT
NOTE: TOP OF ABUTMENT SHOWN FOR SOLID BARRIER RAIL



PART SECTION B-B
21'-8"

ABUTMENT NOTES:
MINIMUM CLEAR DISTANCE FROM FACE OF CONCRETE TO NEAR REINFORCING BAR IS TO BE 2" UNLESS OTHERWISE NOTED OR SHOWN.

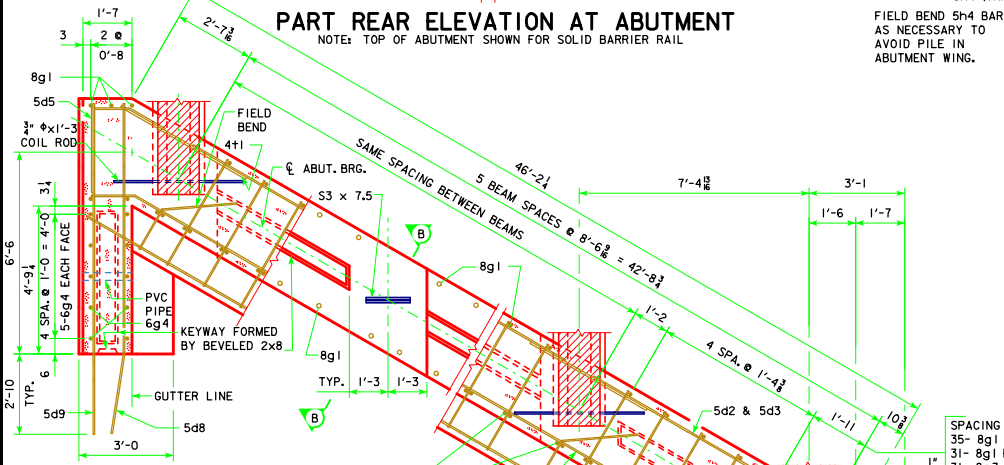
IF NECESSARY TO PREVENT DAMAGE TO THE END OF THE BRIDGE DECK OR BACKWALL FROM CONSTRUCTION EQUIPMENT, AN APPROPRIATE METHOD OF PROTECTION APPROVED BY THE ENGINEER SHALL BE PROVIDED BY THE BRIDGE CONTRACTOR AT NO EXTRA COST TO THE COUNTY OR STATE.

ABUTMENT PILES SHALL BE DRIVEN TO VALUES SHOWN IN DESIGN PLANS.

BARRIER RAIL NOT SHOWN IN DETAILS.

IF ROCK IS CLOSER THAN 15' BELOW ABUTMENT FOOTING, SPECIAL ANALYSIS MAY BE REQUIRED.

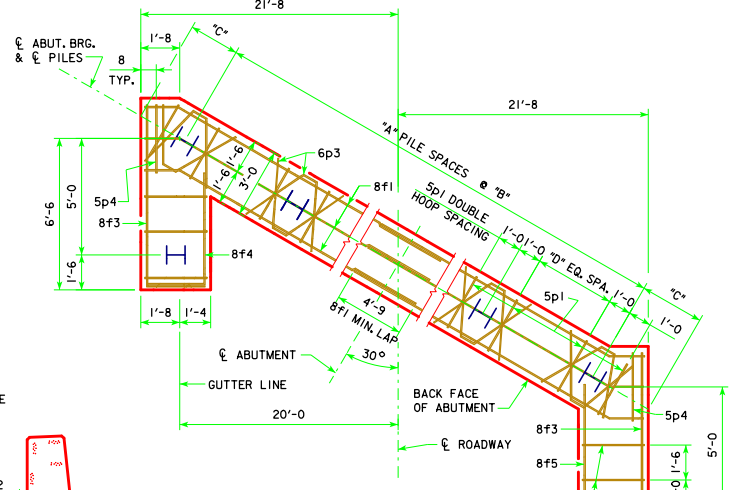
NOTE:
THE SPIRAL AT THE TOP OF EACH PILE TO BE 7 TURNS OF NO. 2 BAR, 21" DIAMETER, 3" PITCH WITH 3 - L₄ x 1/4 x 1/8 SPACERS PUNCHED TO HOLD SPIRAL.



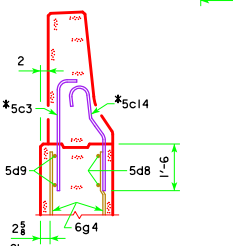
PART SECTION A-A

ABUTMENT PILE SPACING		℄-℄ ABUT. BRG.	201'-4	213'-10	226'-4	243'-0
WITH STEEL H-PILES	"A" PILE SPACES		7	7	8	8
	"B" (FT. - IN.)		6'-4	6'-4	5'-7	5'-7
	"C" (FT. - IN.)		2'-10 1/4	2'-10 1/4	2'-8 1/4	2'-8 1/4
	"D" EQUAL SPACES		4	4	3	3
	NO. OF PILES PER ABUT.		10	10	11	11
P _u STRENGTH I DESIGN LOAD (KIPS)			140	144	132	140

NOTE: P_u STRENGTH I DESIGN LOAD (KIPS) IS NOT THE VALUE USED IN THE FIELD FOR DRIVING PILES.
NOTE: THE PILE TYPE AND NUMBER OF PILES ARE TO BE INCLUDED ON THE SUMMARY QUANTITIES SHEET IN THE PLAN.



ABUTMENT PILE PLAN



PART SECTION C-C

* NOTE: SEE BARRIER RAIL SHEET FOR DETAILS. REINFORCING BARS 5c3 AND 5c14 ARE INCLUDED IN BARRIER RAIL QUANTITIES.

LATEST REVISION DATE
Thomas E. Mc Donnell
APPROVED BY BRIDGE ENGINEER

IOWADOT Highway Division

STANDARD DESIGN - 40' ROADWAY, THREE SPAN BRIDGE
PRETENSIONED PRESTRESSED CONCRETE BEAM BRIDGES
SEPTEMBER, 2014

ABUTMENT DETAILS
30° SKEW C BEAMS

H40-19-14