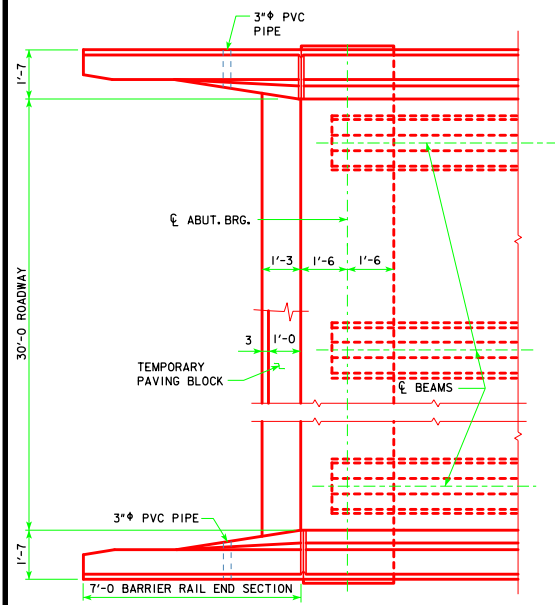


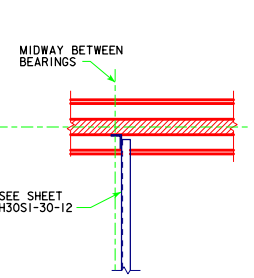
PART LONGITUDINAL SECTION NEAR GUTTER
(FOR DETAILS OF INTERMEDIATE DIAPHRAGM SEE SHEET H30SI-30-12)

PART END VIEW AT ABUTMENT
PROVIDE ELEVATIONS A AND B IN THE BRIDGE PLAN SHEETS.

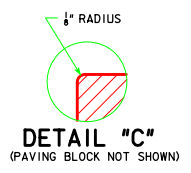
NOTE: PLUG 3" PVC PIPE WITH EXPANDING FOAM PRIOR TO BACKFILLING BEHIND ABUTMENTS.



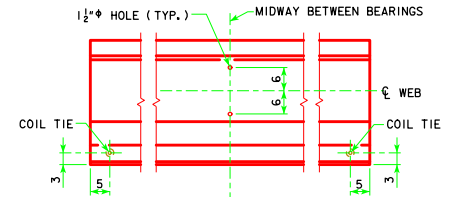
PART PLAN



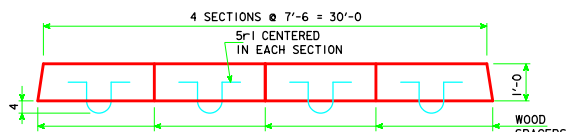
SECTION B-B



DETAIL "C"
(PAVING BLOCK NOT SHOWN)



LOCATION OF BEAM COIL TIES AND STEEL DIAPHRAGM BOLT HOLES



PLAN OF TEMPORARY PAVING BLOCK

NOTE: LINE PAVING NOTCH WITH TAR PAPER BEFORE PLACING THE TEMPORARY PAVING BLOCK.

LATEST REVISION DATE	<i>Norman E. M. Dwyer</i>	APPROVED BY BRIDGE ENGINEER	Iowa Department of Transportation Highway Division
	STANDARD DESIGN - 30' ROADWAY, SINGLE SPAN BRIDGE PRETENSIONED PRESTRESSED CONCRETE BEAM BRIDGES APRIL, 2012		
	LONGITUDINAL SECTION		H30SI-05-12