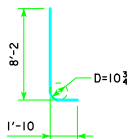
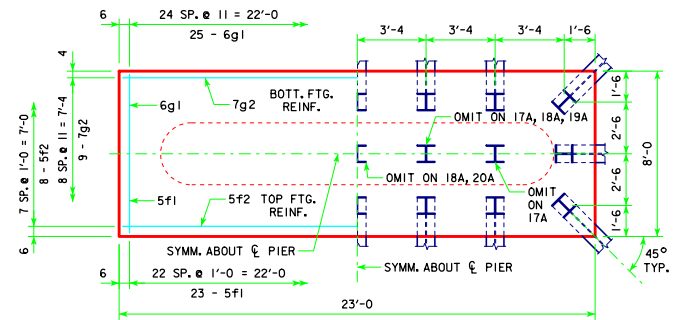


TYPICAL SECTION

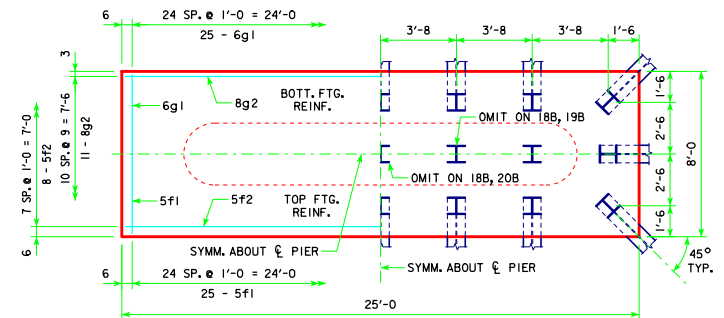


d2

NOTE: D = PIN DIAMETER.
DIMENSIONS ARE OUT TO OUT.



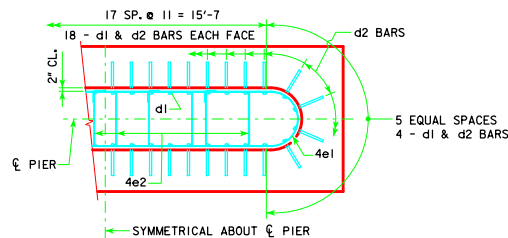
3'-6 x 8'-0 x 23'-0 FOR 17A, 18A, 19A & 20A



3'-6 x 8'-0 x 25'-0 FOR 18B, 19B & 20B

H IN FT.	CL - CL ABUT. BRG.	PILING (HP10x57)		FOOTING SIZE
		NO. & LAYOUT	① LRFD P _u STRENGTH I ₁ DES. LOAD (KIPS)	
18 TO 16	201'-4	17A	141	3'-6 x 8' x 23'
	213'-10	17A	146	
	226'-4	18A	143	
	243'-0	19A	143	
16 TO 21	201'-4	17A	145	3'-6 x 8' x 23'
	213'-10	18A	141	
	226'-4	19A	142	
	243'-0	20A	142	
21 TO 24	201'-4	18B	138	3'-6 x 8' x 25'
	213'-10	18B	143	
	226'-4	19B	143	
	243'-0	20B	143	

FOOTING SIZE	REINFORCING STEEL (ONE FOOTING)				STRUCTURAL CONCRETE (CY)
	BAR	NO., SIZE & SPACING	LENGTH	WEIGHT (LB.)	
3'-6 x 8' x 23'	d2	44 - #10 AS SHOWN	10'-0	1893	2971
	f1	23 - #5 @ 1'-0	7'-8	184	
	f2	8 - #5 @ 1'-0	22'-8	189	
	g1	25 - #6 @ 0'-11	7'-8	288	
	g2	9 - #7 @ 0'-11	22'-8	417	
3'-6 x 8' x 25'	d2	44 - #10 AS SHOWN	10'-0	1893	3311
	f1	25 - #5 @ 1'-0	7'-8	200	
	f2	8 - #5 @ 1'-0	24'-8	206	
	g1	25 - #6 @ 1'-0	7'-8	288	
	g2	11 - #8 @ 0'-9	24'-8	724	



d2 LAYOUT

(SEE SECTION A-A ON SHEET H30-78-06.)

① NOTE: P_u STRENGTH I DESIGN LOAD (KIPS) IS NOT THE VALUE USED IN THE FIELD FOR DRIVING PILES.

FOOTING NOTES:

THESE FOOTINGS ARE DESIGNED AND DETAILED TO BE USED WITH THE CAP AND COLUMN DETAILS OF THE TEE PIERS AS SHOWN ON SHEET H30-57-06.

BATTER PILES IN EXTERIOR ROWS 1:4 IN THE DIRECTION SHOWN.

STEEL PILING USED AS POINT BEARING SHALL HAVE A MINIMUM DISTANCE OF APPROXIMATELY 10 FEET FROM BOTTOM OF FOOTING TO TOP OF BEARING ROCK. THE PILE LAYOUTS ARE SUCH THAT THE DISTANCE CENTER TO CENTER OF ADJACENT PILING SHALL NOT EXCEED 8'-0.

PIER PILES SHALL BE DRIVEN TO VALUES SHOWN IN DESIGN PLANS.

LATEST REVISION DATE 04-13	 APPROVED BY BRIDGE ENGINEER	 STANDARD DESIGN - 30' ROADWAY, THREE SPAN BRIDGES PRETENSIONED PRESTRESSED CONCRETE BEAM BRIDGES DECEMBER, 2006	TEE PIER-HP10x57 SRL-1 STEEL PILE FOOTINGS 45° SKEW - H=16' to 24'	H30-79-06

REVISED 04-13 - REVISION FOR LRFD PILE DESIGN.